

Exhibit A

	Company Name	Meeting Date	Proponent	For as % Shares Out	For as % Yes/No	For as % Votes Cast ⁽¹⁾
1	3M Company	5/10/2011	Walden Asset Management	-	-	-
2	Alcoa Inc.	5/8/2008	Free Enterprise Action Fund	3.17%	5.16%	4.25%
3	Alcoa Inc.	5/8/2009	Free Enterprise Action Fund	-	-	-
4	Allegheny Energy, Inc.	5/17/2007		25.76%	39.50%	34.75%
5	Alpha Natural Resources, Inc.	5/20/2009	New York City Pension Funds	-	-	-
6	Alpha Natural Resources, Inc.	5/19/2010	Unitarian Universalist Association of Congregations	-	-	-
7	Alpha Natural Resources, Inc.	5/19/2011	Unitarian Universalist Association of Congregations	16.89%	27.51%	21.54%
8	Alpha Natural Resources, Inc.	5/22/2013	Unitarian Universalist Association of Congregations	7.06%	17.99%	12.62%
9	Alpha Natural Resources, Inc.	5/22/2013		11.11%	26.59%	19.87%
10	Amazon.com, Inc.	6/7/2011	Calvert Asset Management Co., Inc.	14.58%	20.37%	17.76%
11	Amazon.com, Inc.	5/24/2012	Calvert Asset Management Co., Inc.	14.76%	21.19%	18.45%
12	Amazon.com, Inc.	5/23/2013	Thomas van Dyck	-	-	-
13	Ameren Corporation	5/2/2006		4.43%	7.85%	7.10%
14	Ameren Corporation	4/24/2007		5.03%	8.87%	8.03%
15	Ameren Corporation	4/22/2008		6.38%	9.86%	8.93%
16	Ameren Corporation	4/28/2009		6.68%	10.98%	9.84%
17	Ameren Corporation	4/27/2010		4.53%	7.37%	6.77%
18	Ameren Corporation	4/21/2011	School Sisters of Notre Dame, Mankato Province	31.14%	52.71%	46.54%
19	Ameren Corporation	4/24/2012		6.15%	10.84%	9.23%
20	Ameren Corporation	4/24/2012	As You Sow	5.97%	10.53%	8.96%
21	Ameren Corporation	4/24/2012		5.89%	10.42%	8.84%
22	Ameren Corporation	4/23/2013		6.04%	11.05%	9.14%
23	Anadarko Petroleum Corporation	5/17/2011	Trillium Asset Management Corp.	-	-	-
24	Apple Inc.	4/27/2006	Education Foundation of America	5.27%	9.33%	8.22%

25	Apple Inc.	5/10/2007	The Educational Foundation of America	-	-	-
26	Apple Inc.	5/10/2007	Trillium Asset Management Corp.	-	-	-
27	Arch Coal, Inc.	4/24/2008	New York City Pension Funds	-	-	-
28	Arch Coal, Inc.	4/28/2011	New York State Common Retirement Fund	-	-	-
29	Arch Coal, Inc.	4/26/2012	Sisters of Saint Joseph of Carondelet	26.81%	44.65%	41.59%
30	Arch Coal, Inc.	4/25/2013	New York State Common Retirement Fund	-	-	-
31	Archer-Daniels-Midland Company	11/3/2011	Nathan Cummings Foundation	3.38%	5.79%	4.81%
32	Assurant, Inc.	5/14/2009	California State Teachers Retirement System	-	-	-
33	AT&T Inc.	4/27/2012	New York City Retirement Systems	-	-	-
34	AT&T Inc.	4/27/2012	Calvert Asset Management Co., Inc.	-	-	-
35	Avis Budget Group, Inc.	6/12/2009	California State Teachers Retirement System	6.24%	11.79%	11.13%
36	Avon Products, Inc.	5/5/2005	Domini Social Investments LLC	3.50%	4.78%	4.29%
37	Bank of America Corporation	4/23/2008	Trillium Asset Management Corp.	-	-	-
38	Bank of America Corporation	4/23/2008	Action Fund Management LLC	2.16%	3.80%	3.18%
39	Bank of America Corporation	4/28/2010	Trillium Asset Management Corp.	-	-	-
40	Bank of America Corporation	5/8/2013	William Barclay	-	-	-
41	Becton, Dickinson and Company	1/31/2006	Domini Social Investments LLC	5.80%	8.72%	7.52%
42	Bed Bath & Beyond Inc.	6/29/2006		0.02%	28.74%	25.83%
43	Bed Bath & Beyond Inc.	7/10/2007		-	-	-
44	Berkshire Hathaway Inc.	4/30/2011	Emily S. Coward	6.56%	10.15%	9.43%

45	Berkshire Hathaway Inc.	5/4/2013	Robert L. Berridge	5.73%	8.78%	8.15%
46	Best Buy Co, Inc.	6/25/2008	Mark Squire	-	-	-
47	Boston Properties, Inc.	5/15/2007	New England Yearly Meeting of Friends Pooled Funds	22.93%	32.55%	28.23%
48	Cabot Oil & Gas Corporation	4/27/2010	New York State Common Retirement Fund	21.23%	35.90%	25.29%
49	Cagle's, Inc.	7/17/2009	People for the Ethical Treatment of Animals Inc. (PETA)	0.64%	0.78%	0.78%
50	Carrizo Oil & Gas, Inc.	6/2/2011	New York State Common Retirement Fund	31.40%	43.72%	36.43%
51	Caterpillar Inc.	6/11/2008	Free Enterprise Action Fund	-	-	-
52	Centex Corporation	7/13/2006	Nathan Cummings Foundation	6.18%	9.02%	8.01%
53	Centex Corporation	7/10/2008	Nathan Cummings Foundation	13.33%	26.09%	16.67%
54	Chesapeake Energy Corporation	6/11/2010	Green Century Equity Fund	12.75%	25.40%	19.41%
55	Chevron Corporation	4/27/2005	Sierra Club	5.55%	8.65%	7.67%
56	Chevron Corporation	4/26/2006	Green Century Capital Management, Inc.	5.35%	8.66%	7.71%
57	Chevron Corporation	4/25/2007	Sisters of St. Dominic of Caldwell New Jersey	5.19%	8.47%	7.31%
58	Chevron Corporation	5/28/2008	Green Century Capital Management, Inc.	17.76%	28.61%	24.71%
59	Chevron Corporation	5/28/2008	The American Baptist Home Mission Society	6.37%	10.42%	8.87%
60	Chevron Corporation	5/27/2009	Green Century Capital Management, Inc.	-	-	-
61	Chevron Corporation	5/27/2009	Sisters of St. Dominic of Caldwell New Jersey	-	-	-
62	Chevron Corporation	5/26/2010	New York City Pension Funds	4.71%	8.56%	6.81%

63	Chevron Corporation	5/25/2011	AFL-CIO Reserve Fund	-	-	-
64	Chevron Corporation	5/25/2011		4.85%	8.63%	7.12%
65	Chevron Corporation	5/25/2011	The Sisters of St. Francis of Philadelphia	22.21%	40.48%	32.59%
66	Chevron Corporation	5/25/2011		4.09%	7.28%	6.00%
67	Chevron Corporation	5/30/2012	James B. Hoy	-	-	-
68	Chevron Corporation	5/30/2012	AFL-CIO Reserve Fund	5.70%	8.74%	8.00%
69	Chevron Corporation	5/30/2012	As You Sow	18.39%	27.91%	25.81%
70	Chevron Corporation	5/29/2013		4.81%	7.57%	6.99%
71	Chevron Corporation	5/29/2013		4.61%	7.25%	6.69%
72	Chevron Corporation	5/29/2013		18.56%	30.20%	26.96%
73	Choice Hotels International, Inc.	4/26/2013	Stephen Sacks	8.63%	9.81%	9.45%
74	Citigroup Inc.	4/22/2008	Free Enterprise Action Fund	2.54%	4.90%	3.96%
75	Citigroup Inc.	4/22/2008	Boston Common Asset Management LLC	2.02%	3.89%	3.16%
76	Citigroup Inc.	4/21/2009	Free Enterprise Action Fund	2.56%	7.34%	6.21%
77	CLECO Corporation	4/30/2010	Green Century Equity Fund	-	-	-
78	CMS Energy Corporation	5/21/2010	New York City Pension Funds	23.30%	35.10%	28.35%
79	CMS Energy Corporation	5/20/2011	William M. Hamada Revocable Trust	4.58%	6.64%	5.52%
80	Comcast Corporation	5/31/2012	New York City Retirement Systems	-	-	-
81	ConocoPhillips	5/10/2006	Green Century Capital Management, Inc.	17.60%	25.55%	22.36%
82	ConocoPhillips	5/9/2007	Catholic Healthcare West	-	-	-
83	ConocoPhillips	5/9/2007	Green Century Capital Management, Inc.	16.99%	26.73%	22.92%
84	ConocoPhillips	5/14/2008	Action Fund Management LLC	2.31%	3.66%	3.08%
85	ConocoPhillips	5/14/2008	New Covenant Trust Co. N.A.	18.43%	29.38%	24.50%
86	ConocoPhillips	5/14/2008	Green Century Capital Management, Inc.	16.83%	26.63%	22.37%

87	ConocoPhillips	5/14/2008	Trillium Asset Management Corp.	17.38%	27.48%	23.09%
88	ConocoPhillips	5/13/2009	Trillium Asset Management Corp.	18.85%	30.32%	25.87%
89	ConocoPhillips	5/13/2009	Board of Pensions of the Presbyterian Church (USA)	16.90%	27.43%	23.20%
90	ConocoPhillips	5/13/2009	The Domestic and Foreign Missionary Society of the Episcopal Church	-	-	-
91	ConocoPhillips	5/12/2010	California State Teachers Retirement System	16.44%	27.06%	22.49%
92	ConocoPhillips	5/12/2010	The Domestic and Foreign Missionary Society of the Episcopal Church	4.07%	6.66%	5.57%
93	ConocoPhillips	5/12/2010	Northwest Women Religious Investment Trust	4.20%	6.93%	5.75%
94	ConocoPhillips	5/12/2010	Needmor Fund	4.55%	7.49%	6.22%
95	ConocoPhillips	5/12/2010	Board of Pensions of the Presbyterian Church (USA)	15.69%	25.55%	21.46%
96	ConocoPhillips	5/11/2011		3.85%	6.06%	5.25%
97	ConocoPhillips	5/11/2011	AFL-CIO Reserve Fund	4.87%	7.76%	6.63%
98	ConocoPhillips	5/11/2011		16.45%	26.79%	22.40%
99	ConocoPhillips	5/11/2011	Trillium Asset Management Corp.	17.65%	27.84%	24.04%
100	ConocoPhillips	5/11/2011		4.86%	7.75%	6.62%
101	ConocoPhillips	5/9/2012		15.81%	27.03%	22.75%
102	ConocoPhillips	5/9/2012		3.83%	6.31%	5.51%
103	ConocoPhillips	5/9/2012		4.84%	8.03%	6.97%
104	ConocoPhillips	5/14/2013		16.79%	29.42%	24.62%
105	CONSOL Energy Inc.	5/1/2007	New York City Pension Funds	4.08%	6.76%	5.83%
106	CONSOL Energy Inc.	4/29/2008	New York City Pension Funds	22.89%	39.64%	29.19%

107	CONSOL Energy Inc.	4/28/2009	New York State Common Retirement Fund	-	-	-
108	CONSOL Energy Inc.	4/28/2009	New York City Pension Funds	-	-	-
109	CONSOL Energy Inc.	5/4/2010	New York City Pension Funds	-	-	-
110	CONSOL Energy Inc.	5/8/2013	As You Sow	14.29%	19.72%	16.17%
111	CSX Corporation	5/5/2010	William R. Miller	-	-	-
112	CSX Corporation	5/4/2011	William R. Miller	-	-	-
113	CVS Caremark Corporation	5/12/2010	AFL-CIO	-	-	-
114	CVS Caremark Corporation	5/11/2011	First Affirmative Financial Network	0.03%	0.04%	0.04%
115	D.R. Horton, Inc.	1/26/2006		4.35%	6.03%	5.51%
116	D.R. Horton, Inc.	1/20/2011	Nathan Cummings Foundation	18.94%	34.06%	23.22%
117	Danaher Corporation	5/7/2013	Trinity Health	-	-	-
118	Dominion Resources, Inc.	4/22/2005	Office of the Comptroller of New York City	5.42%	8.26%	7.63%
119	Dominion Resources, Inc.	4/28/2006		15.04%	22.56%	20.51%
120	Dominion Resources, Inc.	4/27/2007	Office of the Comptroller of New York City	13.35%	21.70%	18.50%
121	Dominion Resources, Inc.	5/9/2008	New York City Pension Funds	-	-	-
122	Dominion Resources, Inc.	5/5/2009	Ruth McElroy Amundsen	2.52%	4.30%	3.61%
123	Dominion Resources, Inc.	5/18/2010		3.15%	5.64%	4.57%
124	Dominion Resources, Inc.	5/12/2011	Robert A. Vanderhye	-	-	-
125	Dominion Resources, Inc.	5/12/2011		5.02%	9.23%	7.58%
126	Dominion Resources, Inc.	5/12/2011	Faye S. Rosenthal Living Trust	2.22%	4.05%	3.35%
127	Dominion Resources, Inc.	5/12/2011		2.79%	5.06%	4.21%
128	Dominion Resources, Inc.	5/12/2011	Trillium Asset Management Corp.	3.67%	6.66%	5.54%
129	Dominion Resources, Inc.	5/12/2011	Pamela Morgan	-	-	-
130	Dominion Resources, Inc.	5/8/2012	Ruth McElroy Amundsen	3.52%	5.78%	5.59%
131	Dominion Resources, Inc.	5/8/2012		3.87%	6.36%	6.15%
132	Dominion Resources, Inc.	5/8/2012		5.77%	9.52%	9.15%
133	Dominion Resources, Inc.	5/8/2012	Elena Baum	-	-	-
134	Dominion Resources, Inc.	5/8/2012		10.64%	17.55%	16.89%
135	Dominion Resources, Inc.	5/8/2012		5.50%	9.06%	8.72%

136	Dominion Resources, Inc.	5/3/2013	Eifiona L. Main	-	-	-
137	Dominion Resources, Inc.	5/3/2013	Marion Edey	-	-	-
138	Dominion Resources, Inc.	5/3/2013	Pamela Morgan	13.90%	22.61%	21.63%
139	Dominion Resources, Inc.	5/3/2013		4.24%	6.90%	6.59%
140	Dominion Resources, Inc.	5/3/2013	The Presbyterian Church (USA)	-	-	-
141	Dominion Resources, Inc.	5/3/2013	New York State Common Retirement Fund	2.97%	4.83%	4.62%
142	Dominion Resources, Inc.	5/3/2013	Robert A. Vanderhye	-	-	-
143	Dover Corporation	5/1/2008	Calvert Asset Management Co., Inc.	25.23%	34.23%	31.97%
144	Dover Corporation	5/7/2009	Calvert Asset Management Co., Inc.	28.19%	40.50%	35.14%
145	Dr Pepper Snapple Group, Inc.	5/17/2012	Unitarian Universalist Association of Congregations	22.51%	32.20%	27.76%
146	DTE Energy Company	5/3/2012	New York State Common Retirement Fund	18.79%	29.46%	28.36%
147	Duke Energy Corporation	5/6/2010		4.57%	9.28%	7.79%
148	Duke Energy Corporation	5/5/2011		3.24%	6.47%	5.74%
149	Duke Energy Corporation	5/5/2011	As You Sow	4.25%	8.49%	7.52%
150	Duke Energy Corporation	5/3/2012	New York State Common Retirement Fund	-	-	-
151	Duke Energy Corporation	5/3/2012	Lisa Renstrom	5.66%	11.95%	10.19%
152	Duke Energy Corporation	5/2/2013	New York State Common Retirement Fund	-	-	-
153	Dynegy Inc.	5/22/2009	New York City Pension Funds	12.59%	17.22%	16.17%
154	Dynegy Inc.	5/21/2010	New York City Pension Funds	10.19%	16.08%	14.35%
155	Dynegy Inc.	6/15/2011	New York City Pension Funds	6.26%	8.54%	7.92%
156	E.I. DuPont de Nemours and Company	4/25/2007	Action Fund Management LLC	3.15%	5.00%	4.37%
157	E.I. DuPont de Nemours and Company	4/25/2007	United Steelworkers, Paper and Forestry, Rubber, Mnfr, Energy, Allied Indstrl, and Svc Intl Union	3.90%	6.22%	5.42%

158	E.I. DuPont de Nemours and Company	4/30/2008	Free Enterprise Action Fund	2.01%	3.26%	2.80%
159	E.I. DuPont de Nemours and Company	4/30/2008	Amalgamated Bank Longview Collective Investment Fund	-	-	-
160	E.I. DuPont de Nemours and Company	4/29/2009	Free Enterprise Action Fund	-	-	-
161	E.I. DuPont de Nemours and Company	4/24/2013	Sisters of Charity of St. Elizabeth	3.55%	5.61%	5.25%
162	Eastman Kodak Company	5/11/2011		-	-	-
163	Energen Corporation	4/28/2010	Miller/Howard Investments, Inc.	-	-	-
164	Energen Corporation	4/27/2011	William M. Hamada Revocable Trust	34.00%	49.45%	43.45%
165	Entergy Corporation	5/4/2012	New York State Common Retirement Fund	-	-	-
166	Entergy Corporation	5/4/2012	March S. Gallagher	-	-	-
167	Entergy Corporation	5/3/2013	New York State Common Retirement Fund	3.88%	5.91%	4.90%
168	Entergy Corporation	5/3/2013	March S. Gallagher	-	-	-
169	EOG Resources, Inc.	4/28/2010	Green Century Equity Fund	21.44%	30.95%	25.14%
170	EQT Corporation	4/21/2010	Miller/Howard Investments, Inc.	-	-	-
171	Exelon Corporation	4/29/2008	Free Enterprise Action Fund	2.18%	3.75%	3.13%
172	Exelon Corporation	4/28/2009	Free Enterprise Action Fund	2.08%	3.95%	3.28%
173	Exxon Mobil Corporation	5/25/2005	David Cunningham	5.01%	8.13%	7.35%
174	Exxon Mobil Corporation	5/25/2005	Province of St. Joseph of the Capuchin Order	17.74%	28.44%	26.03%
175	Exxon Mobil Corporation	5/25/2005	Christian Brothers Investment Services	6.42%	10.27%	9.42%

176	Exxon Mobil Corporation	5/31/2006	Green Century Capital Management, Inc.	5.07%	8.50%	7.59%
177	Exxon Mobil Corporation	5/30/2007	Mario Lalanne	4.14%	7.11%	6.17%
178	Exxon Mobil Corporation	5/30/2007	Stephen Viederman	4.19%	7.30%	6.24%
179	Exxon Mobil Corporation	5/30/2007	Sisters of St. Dominic of Caldwell New Jersey	17.97%	31.12%	26.78%
180	Exxon Mobil Corporation	5/28/2008	Sisters of St. Dominic of Caldwell New Jersey	17.31%	30.87%	26.06%
181	Exxon Mobil Corporation	5/28/2008	Green Century Capital Management, Inc.	4.73%	8.44%	7.13%
182	Exxon Mobil Corporation	5/28/2008	Neva Rockefeller Goodwin	5.90%	10.40%	8.88%
183	Exxon Mobil Corporation	5/28/2008	Mario Lalanne	3.97%	6.98%	5.97%
184	Exxon Mobil Corporation	5/28/2008	Stephen Viederman	15.11%	27.45%	22.75%
185	Exxon Mobil Corporation	5/28/2008	Province of St. Joseph of the Capuchin Order	5.33%	9.40%	8.03%
186	Exxon Mobil Corporation	5/27/2009	Neva Rockefeller Goodwin	5.58%	9.98%	8.64%
187	Exxon Mobil Corporation	5/27/2009	Stephen Viederman	15.11%	27.27%	23.39%
188	Exxon Mobil Corporation	5/27/2009	The Domestic and Foreign Missionary Society of the Episcopal Church	-	-	-
189	Exxon Mobil Corporation	5/27/2009	Sisters of St. Dominic of Caldwell New Jersey	16.20%	29.00%	25.06%
190	Exxon Mobil Corporation	5/27/2009	Province of St. Joseph of the Capuchin Order	-	-	-
191	Exxon Mobil Corporation	5/26/2010	Sisters of St. Dominic of Caldwell New Jersey	14.19%	27.23%	22.82%
192	Exxon Mobil Corporation	5/26/2010	The Presbyterian Church (USA)	4.68%	9.07%	7.53%
193	Exxon Mobil Corporation	5/26/2010	The Park Foundation	13.57%	26.27%	21.81%

194	Exxon Mobil Corporation	5/26/2010	Province of St. Joseph of the Capuchin Order	3.41%	6.70%	5.48%
195	Exxon Mobil Corporation	5/26/2010	Green Century Capital Management, Inc.	13.71%	26.42%	22.04%
196	Exxon Mobil Corporation	5/26/2010	The Domestic and Foreign Missionary Society of the Episcopal Church	-	-	-
197	Exxon Mobil Corporation	5/25/2011	AFL-CIO Reserve Fund	-	-	-
198	Exxon Mobil Corporation	5/25/2011	Green Century Capital Management, Inc.	14.66%	27.06%	23.07%
199	Exxon Mobil Corporation	5/25/2011	Bartlett Naylor	-	-	-
200	Exxon Mobil Corporation	5/25/2011	The Park Foundation	14.41%	28.17%	22.69%
201	Exxon Mobil Corporation	5/25/2011	Sisters of St. Dominic of Caldwell New Jersey	13.73%	26.53%	21.61%
202	Exxon Mobil Corporation	5/25/2011	Province of St. Joseph of the Capuchin Order	3.25%	6.12%	5.12%
203	Exxon Mobil Corporation	5/30/2012	The Park Foundation	17.14%	29.59%	26.71%
204	Exxon Mobil Corporation	5/30/2012	Green Century Capital Management, Inc.	-	-	-
205	Exxon Mobil Corporation	5/30/2012	Sisters of St. Dominic of Caldwell New Jersey	15.67%	27.09%	24.42%
206	Exxon Mobil Corporation	5/29/2013	Province of St. Joseph of the Capuchin Order	-	-	-
207	Exxon Mobil Corporation	5/29/2013	Sisters of St. Dominic of Caldwell New Jersey	15.20%	26.72%	24.14%
208	Exxon Mobil Corporation	5/29/2013	New York City Retirement Systems	17.17%	30.18%	27.26%
209	FedEx Corporation	9/25/2006	Free Enterprise Action Fund	3.87%	5.57%	4.74%
210	FedEx Corporation	9/24/2007	Free Enterprise Action Fund	2.56%	3.77%	3.25%

211	FirstEnergy Corp.	5/17/2011	-	-	-
212	FirstEnergy Corp.	5/17/2011 Eleanore Despina	24.01%	36.11%	31.24%
213	FirstEnergy Corp.	5/17/2011	20.97%	31.43%	27.28%
214	FirstEnergy Corp.	5/15/2012 As You Sow	8.01%	11.37%	10.25%
215	FirstEnergy Corp.	5/15/2012	20.87%	29.65%	26.70%
216	FirstEnergy Corp.	5/21/2013 Andrew Behar	-	-	-
217	FirstEnergy Corp.	5/21/2013 New York State Common Retirement Fund	-	-	-
218	FLIR Systems, Inc.	4/26/2013 California State Teachers Retirement System	-	-	-
219	Ford Motor Company	5/12/2005 Green Century Capital Management, Inc.	4.66%	6.19%	5.93%
220	Ford Motor Company	5/11/2006 Green Century Capital Management, Inc.	5.33%	7.27%	6.96%
221	Ford Motor Company	5/11/2006 Carl Olson	3.13%	4.28%	4.09%
222	Ford Motor Company	5/10/2007 Interfaith Center on Corporate Responsibility	10.18%	14.10%	13.54%
223	Ford Motor Company	5/10/2007 Carl Olson	2.70%	3.74%	3.59%
224	Ford Motor Company	5/8/2008 Connecticut Retirement Plans & Trust Funds	-	-	-
225	Ford Motor Company	5/8/2008 Free Enterprise Action Fund	2.18%	3.03%	2.80%
226	Ford Motor Company	5/13/2010 Fredrick Wilson	1.55%	2.32%	2.11%
227	Fossil Group, Inc.	5/23/2012 Calvert Asset Management Co., Inc.	20.36%	30.80%	23.06%
228	Fossil Group, Inc.	5/22/2013 Calvert Investment Management, Inc.	19.21%	29.04%	22.26%
229	Foundation Coal Holdings, Inc.	5/22/2008 Unitarian Universalist Association of Congregations	14.84%	22.43%	17.34%
230	Foundation Coal Holdings, Inc.	5/13/2009 Unitarian Universalist Association of Congregations	-	-	-
231	General Electric Company	4/26/2006 Thomas J. Borelli	4.02%	6.93%	6.34%

232	General Electric Company	4/25/2007	Free Enterprise Action Fund	3.68%	6.41%	5.61%
233	General Electric Company	4/23/2008	Free Enterprise Action Fund	2.10%	3.56%	3.12%
234	General Electric Company	4/22/2009	Leo A. Drey	-	-	-
235	General Electric Company	4/28/2010	Betty F. Weitz	-	-	-
236	General Electric Company	4/27/2011	National Center for Public Policy Research	2.26%	4.65%	3.91%
237	General Electric Company	4/25/2012	GE Stockholders' Alliance	1.32%	2.41%	2.24%
238	General Electric Company	4/25/2012	National Center for Public Policy Research	-	-	-
239	General Electric Company	4/25/2012	GE Stockholders' Alliance	-	-	-
240	General Electric Company	4/24/2013	GE Stockholders' Alliance	-	-	-
241	General Electric Company	4/24/2013	New York State Common Retirement Fund	-	-	-
242	General Mills, Inc.	9/24/2013		3.78%	5.99%	5.69%
243	General Motors Company	6/7/2005	Sisters of St. Dominic of Caldwell New Jersey	3.15%	5.62%	5.34%
244	General Motors Company	6/6/2006	Mark Seidenberg	1.88%	2.93%	2.82%
245	General Motors Company	6/5/2007	Sisters of St. Dominic of Caldwell New Jersey	15.89%	29.12%	25.73%
246	General Motors Company	6/3/2008	Connecticut Retirement Plans & Trust Funds	-	-	-
247	General Motors Company	6/3/2008	The Community of the Sisters of St. Dominic of Caldwell, NJ	9.29%	14.97%	13.79%
248	GenOn Energy, Inc	5/4/2011	New York City Pension Funds	11.59%	16.76%	14.93%
249	GenOn Energy, Inc	5/9/2012	New York City Retirement Systems	18.29%	24.51%	22.10%
250	Great Plains Energy Incorporated	5/6/2008	Conrad Gebhart	-	-	-
251	Great Plains Energy Incorporated	5/3/2011	Conrad Gebhart	-	-	-

252	Great Plains Energy Incorporated	5/7/2013	Sierra Club	-	-	-
253	Halliburton Company	5/20/2009	General Board of Pension and Health Benefits of the United Methodist Church	3.98%	6.39%	5.55%
254	Hanesbrands Inc.	4/24/2012	Calvert Asset Management Co., Inc.	-	-	-
255	HCP, Inc.	5/12/2005	Harrington Investments, Inc.	4.79%	8.88%	7.95%
256	Hormel Foods Corporation	1/27/2009	People for the Ethical Treatment of Animals Inc. (PETA)	1.71%	2.25%	2.12%
257	IDACORP, Inc.	5/21/2009		30.89%	51.22%	44.79%
258	International Business Machines Corporation	4/30/2013	Green Century Balanced Fund	-	-	-
259	International Coal Group, Inc.	5/20/2009	Office of the Comptroller of New York City	4.53%	7.73%	7.16%
260	International Coal Group, Inc.	5/19/2010	Office of the Comptroller of New York City	11.47%	17.67%	15.60%
261	International Coal Group, Inc.	5/18/2011	Office of the Comptroller of New York City	-	-	-
262	International Paper Company	5/8/2006	Green Century Capital Management, Inc.	4.27%	5.62%	5.18%
263	International Paper Company	5/12/2008	Domini Social Investments LLC	4.30%	6.05%	5.34%
264	International Paper Company	5/11/2009	Domini Social Investments LLC	4.29%	6.64%	5.83%
265	Johnson & Johnson	4/24/2008	Free Enterprise Action Fund	-	-	-
266	JPMorgan Chase & Co.	5/19/2009	Free Enterprise Action Fund	1.80%	2.98%	2.46%
267	JPMorgan Chase & Co.	5/18/2010	Boston Common Asset Management LLC	-	-	-
268	JPMorgan Chase & Co.	5/18/2010	Loyola University Chicago	-	-	-
269	KB Home	4/3/2008	Nathan Cummings Foundation	-	-	-

270	Kimberly-Clark Corporation	4/27/2006	Domini Social Investments LLC	5.70%	8.15%	7.37%
271	Kimberly-Clark Corporation	4/26/2007	Domini Social Investments LLC	5.97%	8.09%	7.43%
272	Lennar Corporation	3/29/2005	Nathan Cummings Foundation	1.67%	2.34%	2.27%
273	Lennar Corporation	4/15/2009	Nathan Cummings Foundation	7.01%	9.91%	9.18%
274	Lennar Corporation	4/14/2010	Nathan Cummings Foundation	5.95%	8.91%	7.79%
275	Lennar Corporation	4/13/2011	Nathan Cummings Foundation	5.71%	8.05%	6.78%
276	Lennar Corporation	4/11/2012	Central Laborers' Pension Fund	8.62%	11.25%	10.36%
277	Liberty Property Trust	5/19/2005	New England Yearly Meeting of Friends Pooled Funds	5.32%	7.45%	7.45%
278	Lowe's Companies, Inc.	5/25/2006	Domini Social Investments LLC	5.05%	7.00%	6.38%
279	Lowe's Companies, Inc.	5/25/2007	Domini Social Investments LLC	4.19%	5.70%	5.21%
280	Lowe's Companies, Inc.	5/30/2008	Christian Brothers Investment Services	-	-	-
281	Lowe's Companies, Inc.	5/29/2009	Green Century Equity Fund	-	-	-
282	Lowe's Companies, Inc.	5/27/2011	David Brook	-	-	-
283	Marathon Oil Corporation	4/27/2011	AFL-CIO Reserve Fund	4.91%	7.44%	6.68%
284	Marathon Oil Corporation	4/25/2012	AFL-CIO Reserve Fund	-	-	-
285	Marriott International, Inc.	5/7/2010	Stephen Sacks	-	-	-
286	Massey Energy Company	5/22/2007	Office of the Comptroller of New York City	9.33%	18.13%	12.40%
287	Massey Energy Company	5/13/2008		17.52%	30.76%	22.18%
288	Massey Energy Company	5/19/2009	Sisters of Saint Joseph of Carondelet	22.27%	39.42%	30.29%
289	Massey Energy Company	5/19/2009	New York City Pension Funds	25.95%	45.65%	35.30%
290	Massey Energy Company	5/18/2010		28.65%	52.42%	35.37%
291	Massey Energy Company	5/18/2010		20.31%	33.28%	25.07%
292	McDonald's Corporation	5/27/2009	Green Century Equity Fund	-	-	-

293	McDonald's Corporation	5/19/2011	Ruth Valere Adar	15.68%	29.32%	23.00%
294	McGraw Hill Financial, Inc.	4/30/2008	Scott McDonald	-	-	-
295	MDU Resources Group, Inc.	4/27/2010	As You Sow	22.60%	40.52%	33.62%
296	MeadWestvaco Corporation	4/28/2008	Province of St. Joseph of the Capuchin Order	-	-	-
297	Meredith Corporation	11/5/2008	Domini Social Investments LLC	3.76%	4.58%	4.45%
298	Mirant Corporation	5/7/2009	General Board of Pension and Health Benefits of the United Methodist Church	24.60%	42.19%	37.55%
299	Mirant Corporation	5/6/2010	New York City Retirement Systems	25.63%	38.16%	34.28%
300	Mondelez International, Inc.	5/23/2012	Cedar Tree Foundation	16.29%	25.63%	23.17%
301	Mondelez International, Inc.	5/23/2012	Indiana Laborers Pension Fund	-	-	-
302	Mondelez International, Inc.	5/23/2012	Domini Social Investments LLC	5.23%	8.25%	7.45%
303	Mondelez International, Inc.	5/21/2013	Margaret Law	5.87%	9.53%	8.48%
304	NextEra Energy, Inc.	5/23/2008	Free Enterprise Action Fund	-	-	-
305	NextEra Energy, Inc.	5/25/2012	New York State Common Retirement Fund	-	-	-
306	NextEra Energy, Inc.	5/23/2013	New York State Common Retirement Fund	3.21%	4.93%	4.66%
307	Norfolk Southern Corporation	5/13/2010	Board of Pensions of the Presbyterian Church (USA)	-	-	-
308	NRG Energy, Inc.	7/21/2009	Free Enterprise Action Fund	0.96%	1.33%	1.09%
309	Occidental Petroleum Corporation	5/5/2006	Carl Olson	4.89%	7.29%	6.35%
310	Occidental Petroleum Corporation	5/4/2007	Carl Olson	3.72%	6.17%	5.18%
311	Occidental Petroleum Corporation	5/2/2008	Carl Olson	3.63%	5.29%	4.46%

312	OGE Energy Corp.	5/22/2008	Boston Common Asset Management LLC	-	-	-
313	OGE Energy Corp.	5/22/2008	Calvert Asset Management Co., Inc.	-	-	-
314	ONEOK, Inc.	5/15/2008	California State Teachers Retirement System	27.66%	35.79%	32.95%
315	ONEOK, Inc.	5/15/2008	New York City Pension Funds	-	-	-
316	ONEOK, Inc.	5/22/2013	The Christopher Reynolds Foundation	24.30%	38.24%	31.71%
317	Peabody Energy Corporation	5/5/2006	Sierra Club	6.94%	9.52%	8.54%
318	Pepco Holdings, Inc.	5/20/2011	John Capozzi	-	-	-
319	Pepco Holdings, Inc.	5/18/2012	John Capozzi	-	-	-
320	PepsiAmericas, Inc.	4/28/2005	Domini Social Investments LLC	3.80%	4.48%	4.33%
321	PepsiCo, Inc.	5/7/2008	As You Sow	4.05%	6.90%	5.88%
322	PepsiCo, Inc.	5/7/2008	Free Enterprise Action Fund	1.63%	2.72%	2.36%
323	PepsiCo, Inc.	5/6/2009	As You Sow	4.86%	8.71%	7.22%
324	PG&E Corporation	5/14/2008	Free Enterprise Action Fund	-	-	-
325	PG&E Corporation	5/12/2010	Ronald D. Rattner	-	-	-
326	Portland General Electric Company	5/13/2010	Miller/Howard Investments, Inc.	-	-	-
327	Portland General Electric Company	5/11/2011	William M. Hamada Revocable Trust	-	-	-
328	PPG Industries, Inc.	4/21/2011	Margot Cheel	3.42%	6.47%	4.87%
329	Progress Energy, Inc.	8/8/2012	New York State Common Retirement Fund	-	-	-
330	PulteGroup, Inc.	5/15/2008	Nathan Cummings Foundation	13.13%	21.97%	17.55%
331	R.R. Donnelley & Sons Company	5/28/2008	Domini Social Investments LLC	4.96%	6.70%	5.85%
332	R.R. Donnelley & Sons Company	5/21/2009	Domini Social Investments LLC	5.72%	8.68%	7.25%

333	R.R. Donnelley & Sons Company	5/20/2010	Domini Social Investments LLC	6.93%	9.96%	8.41%
334	Range Resources Corporation	5/19/2010	New York State Common Retirement Fund	-	-	-
335	Range Resources Corporation	5/22/2013	Trillium Asset Management Corp.	15.94%	21.72%	18.31%
336	Rockwood Holdings, Inc.	5/21/2013	Committee for Investor Responsibility at Wesleyan University	-	-	-
337	Safeway, Inc.	5/19/2010	AFL-CIO Reserve Fund	4.40%	7.80%	5.67%
338	Simon Property Group, Inc.	5/11/2005	New England Yearly Meeting of Friends Pooled Funds	5.43%	7.51%	6.16%
339	Smithfield Foods, Inc.	9/1/2010	Calvert VP S&P Mid Cap 400 Index Portfolio	2.82%	4.32%	3.28%
340	Spectra Energy Corp	5/7/2009	California State Teachers Retirement System	-	-	-
341	Spectra Energy Corp	4/30/2013	Sierra Club	20.62%	35.37%	30.81%
342	Standard Pacific Corp.	5/10/2006	Nathan Cummings Foundation	27.00%	39.25%	37.01%
343	Standard Pacific Corp.	5/14/2008	Nathan Cummings Foundation	15.49%	33.67%	28.08%
344	Standard Pacific Corp.	5/13/2009	Nathan Cummings Foundation	11.11%	15.32%	14.72%
345	Standard Pacific Corp.	5/12/2010	Nathan Cummings Foundation	12.72%	17.36%	16.39%
346	Standard Pacific Corp.	5/18/2011	Nathan Cummings Foundation	3.69%	5.10%	4.82%
347	Starbucks Corporation	3/24/2010	John C. Harrington	5.65%	11.21%	8.07%
348	Starbucks Corporation	3/23/2011	Robert Dozor	4.81%	8.09%	6.60%
349	State Street Corporation	5/20/2009	Walden Asset Management	-	-	-
350	Stericycle, Inc.	4/27/2005		5.55%	8.39%	7.21%
351	Stericycle, Inc.	5/3/2006		4.70%	6.53%	5.96%
352	Target Corporation	6/8/2011	Philip Klasky	18.76%	30.80%	24.59%
353	Target Corporation	6/13/2012	Margaret Law	5.52%	8.55%	6.97%
354	Target Corporation	6/12/2013	Wallace Global Fund	6.05%	9.71%	7.85%
355	Tesoro Corporation	5/4/2011		25.09%	54.29%	34.33%

356	Tesoro Corporation	5/3/2012	AFL-CIO Reserve Fund	-	-	-
357	The AES Corporation	4/24/2008	Dwane G. Ingalls	-	-	-
358	The Coca-Cola Company	4/19/2006	Walden Asset Management	-	-	-
359	The Coca-Cola Company	4/21/2010	Alice de V. Perry	-	-	-
360	The Coca-Cola Company	4/27/2011	Alice de V. Perry	-	-	-
361	The Dow Chemical Company	5/10/2007		14.52%	22.23%	19.64%
362	The Dow Chemical Company	5/15/2008		14.70%	22.82%	19.66%
363	The Dow Chemical Company	5/15/2008	Free Enterprise Action Fund	-	-	-
364	The Dow Chemical Company	5/14/2009		15.73%	28.68%	24.68%
365	The Dow Chemical Company	5/13/2010		5.88%	9.78%	7.78%
366	The Empire District Electric Company	4/25/2013	James S. Evans	7.56%	13.90%	13.47%
367	The Goldman Sachs Group, Inc.	5/7/2010	National Legal and Policy Center	2.10%	3.44%	2.85%
368	The Goldman Sachs Group, Inc.	5/6/2011	National Legal and Policy Center	-	-	-
369	The Goldman Sachs Group, Inc.	5/6/2011	National Center for Public Policy Research	1.60%	2.58%	2.25%
370	The Home Depot, Inc.	5/28/2009	Connecticut Retirement Plans & Trust Funds	13.43%	23.68%	19.58%
371	The Home Depot, Inc.	5/17/2012	David Brook	2.42%	3.63%	3.36%
372	The Home Depot, Inc.	5/23/2013	David Brook	2.87%	4.37%	4.02%
373	The Kroger Co.	6/28/2007	Nathan Cummings Foundation	25.73%	37.44%	31.74%
374	The Kroger Co.	6/26/2008		26.21%	39.64%	32.70%
375	The Kroger Co.	6/24/2010	Calvert Asset Management Co., Inc.	25.68%	40.72%	32.92%
376	The Kroger Co.	6/21/2012		9.01%	12.84%	11.47%
377	The Kroger Co.	6/27/2013		8.43%	12.51%	10.63%
378	The PNC Financial Services Group, Inc.	4/23/2013	Boston Common Asset Management LLC	15.27%	22.78%	19.59%
379	The Procter & Gamble Company	10/9/2012	The Granary Foundation	3.37%	5.78%	5.38%
380	The Ryland Group, Inc.	4/20/2005	Nathan Cummings Foundation	4.94%	7.91%	7.23%

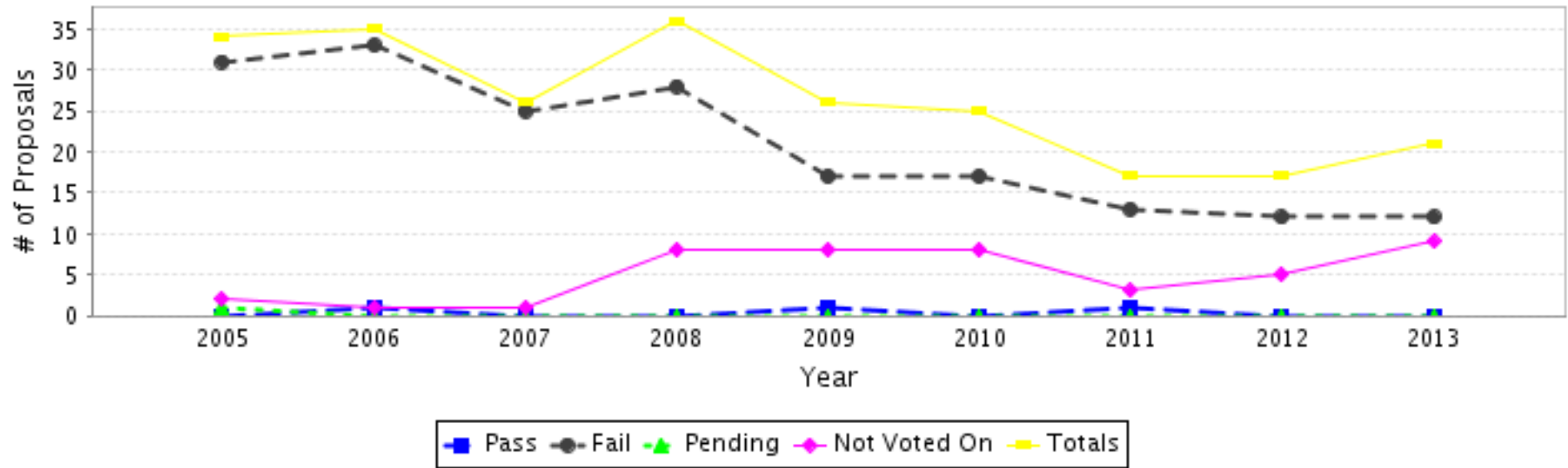
381	The Ryland Group, Inc.	4/23/2008	Nathan Cummings Foundation	15.18%	25.40%	19.51%
382	The Ryland Group, Inc.	4/29/2009	Nathan Cummings Foundation	16.07%	29.91%	21.41%
383	The Ryland Group, Inc.	4/28/2010	Nathan Cummings Foundation	21.69%	37.40%	25.50%
384	The Ryland Group, Inc.	4/27/2011	Calvert Asset Management Co., Inc.	11.71%	22.57%	14.14%
385	The Southern Company	5/23/2007	Sisters of Charity of St. Elizabeth	5.19%	10.95%	9.51%
386	The Southern Company	5/28/2008	Sisters of Charity of St. Elizabeth	6.11%	12.30%	10.70%
387	The Southern Company	5/27/2009	Sisters of Charity of St. Elizabeth	5.51%	11.49%	10.08%
388	The Southern Company	5/26/2010	Sisters of Charity of St. Elizabeth	4.62%	9.87%	8.37%
389	The Southern Company	5/26/2010	Green Century Capital Management, Inc.	9.80%	21.02%	17.77%
390	The Southern Company	5/25/2011	Green Century Capital Management, Inc.	11.40%	23.60%	20.93%
391	The Southern Company	5/25/2011	New York State Common Retirement Fund	-	-	-
392	The Southern Company	5/23/2012	Green Century Capital Management, Inc.	13.87%	26.01%	22.99%
393	The Williams Companies, Inc.	5/20/2010	Green Century Capital Management, Inc.	25.55%	41.84%	34.33%
394	Toll Brothers, Inc.	3/17/2010	New York City Pension Funds	14.14%	29.25%	19.03%
395	Tyson Foods, Inc.	2/6/2009	People for the Ethical Treatment of Animals Inc. (PETA)	0.95%	1.12%	1.04%
396	Tyson Foods, Inc.	2/5/2010	CHRISTUS Health	7.18%	8.42%	7.81%
397	Tyson Foods, Inc.	2/5/2010	The American Baptist Home Mission Society	8.56%	10.01%	9.30%

398	Union Pacific Corporation	5/1/2008	Teamsters General Fund	-	-	-
399	Valero Energy Corporation	4/28/2011	AFL-CIO Reserve Fund	24.02%	43.34%	33.38%
400	Valero Energy Corporation	5/3/2012	AFL-CIO Reserve Fund	25.82%	44.02%	35.75%
401	Vintage Petroleum, Inc.	5/10/2005	Nathan Cummings Foundation	20.34%	25.63%	24.22%
402	Wal-Mart Stores, Inc.	6/6/2008	Free Enterprise Action Fund	-	-	-
403	Wal-Mart Stores, Inc.	6/4/2010	AFL-CIO Reserve Fund	-	-	-
404	Wal-Mart Stores, Inc.	6/3/2011	National Legal and Policy Center	0.87%	1.09%	1.04%
405	Wells Fargo & Company	4/24/2007		-	-	-
406	Weyerhaeuser Company	4/21/2005		2.92%	4.11%	3.58%
407	Weyerhaeuser Company	4/20/2006		3.53%	4.87%	4.31%
408	Weyerhaeuser Company	4/19/2007		3.31%	5.44%	4.58%
409	Weyerhaeuser Company	4/15/2010		15.35%	23.10%	18.89%
410	Whole Foods Market, Inc.	3/6/2006	New England Yearly Meeting of Friends Pooled Funds	5.43%	8.88%	7.81%
411	Whole Foods Market, Inc.	3/5/2007	New England Yearly Meeting of Friends Pooled Funds	5.16%	10.80%	7.95%
412	Whole Foods Market, Inc.	3/15/2013	As You Sow	5.01%	7.43%	6.82%
413	Xcel Energy Inc.	5/19/2010	Green Century Capital Management, Inc.	-	-	-
414	Xcel Energy Inc.	5/18/2011		-	-	-
415	Xcel Energy Inc.	5/16/2012	New York State Common Retirement Fund	-	-	-
416	Xcel Energy Inc.	5/22/2013	New York State Common Retirement Fund	-	-	-
417	YUM! Brands, Inc.	5/17/2007	Sisters of Charity of the Blessed Virgin Mary	4.90%	7.14%	6.25%
418	YUM! Brands, Inc.	5/17/2012	Trillium Asset Management Corp.	21.49%	37.02%	29.76%
419	YUM! Brands, Inc.	5/15/2013	Trillium Asset Management Corp.	-	-	-
420	YUM! Brands, Inc.	5/15/2013	As You Sow	-	-	-
			AVERAGE	10.00%	16.45%	13.89%

Exhibit B

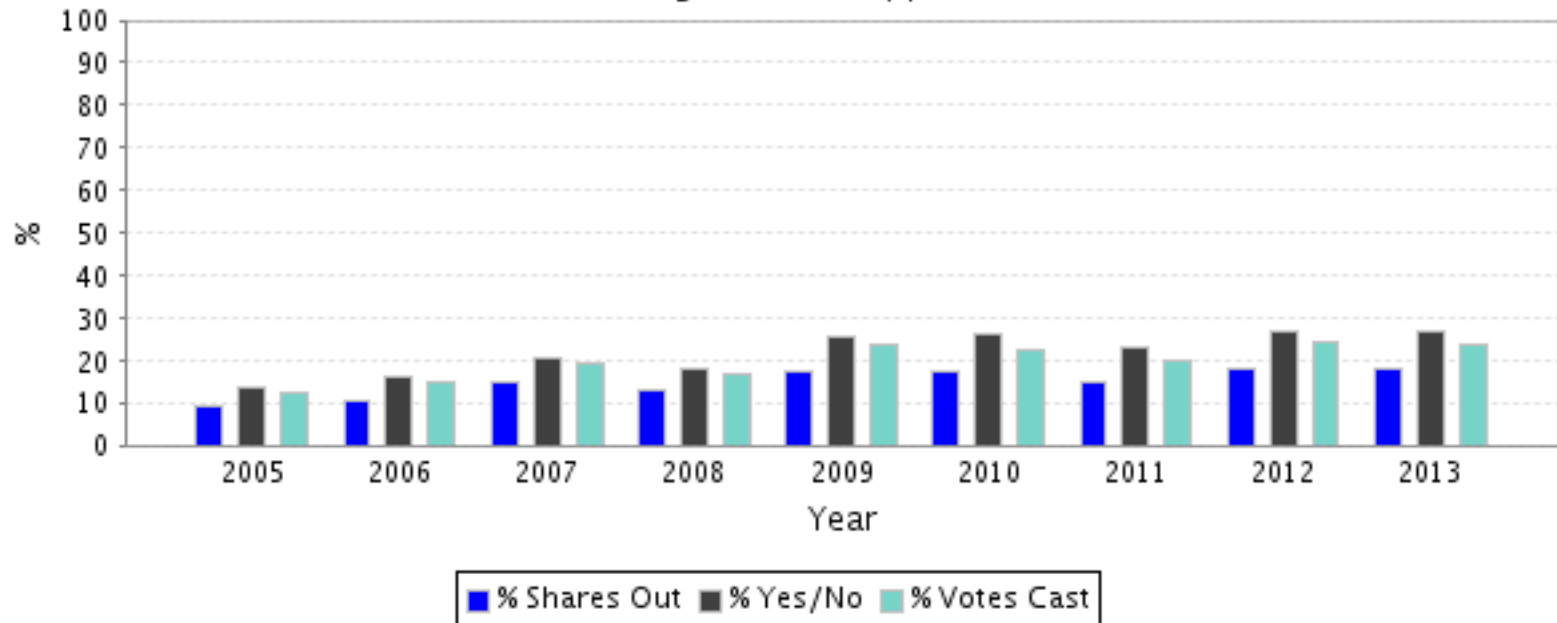
Results Summary and Trend Analysis
Shareholder Proposals: Labor Issues*

Proposal Breakdown



Result	2005		2006		2007		2008		2009		2010		2011		2012		2013		Totals	
	#	% of Total	#	% of Total	#	% of Total	#	% of Total	#	% of Total	#	% of Total	#	% of Total	#	% of Total	#	% of Total	#	% of Total
Pass	0	0	1	2.86	0	0	0	0	1	3.85	0	0	1	5.88	0	0	0	0	3	1.3
Fail	31	91.18	33	94.29	25	96.15	28	77.78	17	65.38	17	68.00	13	76.47	12	70.59	12	57.14	188	79.3
Failed But Received a Majority of Yes/No Votes	0	0	0	0	1	3.85	2	5.56	0	0	0	0	0	0	0	0	0	0	3	1.3
Sub-Total (Voted On)	31	-	34	-	25	-	28	-	18	-	17	-	14	-	12	-	12	-	191	-
Pending/Results Never Disclosed	1	2.94	0	0	0	0	0	0	0	0	0	0	0	0	0	0	0	0	1	0.4
Not Voted On	2	5.88	1	2.86	1	3.85	8	22.22	8	30.77	8	32.00	3	17.65	5	29.41	9	42.86	45	19.0
Totals (All Proposals)	34	100.0	35	100.0	26	100.0	36	100.0	26	100.0	25	100.0	17	100.0	17	100.0	21	100.0	237	100.0

Average Level of Support



Average Vote Results (Votes For)

Result	2005		2006		2007		2008		2009		2010		2011		2012		2013		Totals	
	%	#	%	#	%	#	%	#	%	#	%	#	%	#	%	#	%	#	%	#
% Shares Out	9.0	31	10.4	34	14.8	25	13.0	28	17.4	18	17.2	17	14.8	14	18.2	12	17.9	12	13.7	191
% Yes/No	13.7	31	16.2	34	20.7	25	18.0	28	25.4	18	26.2	17	23.0	14	26.9	12	26.5	12	20.2	191
% Votes Cast(1)	12.3	31	14.8	34	19.1	25	16.5	28	23.4	18	22.6	17	20.0	14	24.2	12	23.6	12	18.2	191
Average Vote Results (Votes Against)																				
Result	2005		2006		2007		2008		2009		2010		2011		2012		2013		Totals	
	%	#	%	#	%	#	%	#	%	#	%	#	%	#	%	#	%	#	%	#
% Shares Out	58.1	31	56.1	34	56.3	25	59.6	28	51.4	18	47.5	17	48.3	14	50.3	12	49.1	12	54.4	191
% Yes/No	86.3	31	83.8	34	79.3	25	82.0	28	74.6	18	73.8	17	77.0	14	73.1	12	73.5	12	79.8	191
% Votes Cast(1)	77.8	31	77.1	34	71.8	25	74.3	28	66.7	18	62.7	17	67.3	14	66.8	12	65.9	12	71.8	191
Average Vote Results (Abstentions)																				
Result	2005		2006		2007		2008		2009		2010		2011		2012		2013		Totals	
	%	#	%	#	%	#	%	#	%	#	%	#	%	#	%	#	%	#	%	#
% Shares Out	8.2	28	5.8	33	7.2	25	7.4	27	7.7	18	11.2	17	9.0	14	6.5	12	7.8	12	7.7	186
% Yes/No	12.6	28	9.4	33	10.4	25	11.0	27	11.7	18	17.9	17	14.9	14	10.3	12	12.0	12	11.9	186
% Votes Cast(1)	11.0	28	8.3	33	9.2	25	9.5	27	10.0	18	14.7	17	12.8	14	8.9	12	10.5	12	10.3	186
Average Vote Results (Broker Non-Votes)																				
Result	2005		2006		2007		2008		2009		2010		2011		2012		2013		Totals	
	%	#	%	#	%	#	%	#	%	#	%	#	%	#	%	#	%	#	%	#
% Shares Out	0.1	25	0.1	30	0.1	20	0.1	20	0.1	13	0.1	17	0.1	14	0.1	12	0.1	12	0.1	163
% Yes/No	20.7	25	21.3	30	17.7	20	14.4	20	17.9	13	17.9	17	23.0	14	18.8	12	20.3	12	19.2	163
% Votes Cast(1)	18.3	25	19.4	30	16.0	20	13.0	20	16.4	13	15.3	17	19.8	14	16.8	12	18.0	12	17.1	163

(1) Include abstentions

Search Result

237 proposal(s)

Search Criteria

Exclude proposals by Non-US companies, Shareholder proposals only, 14a-8

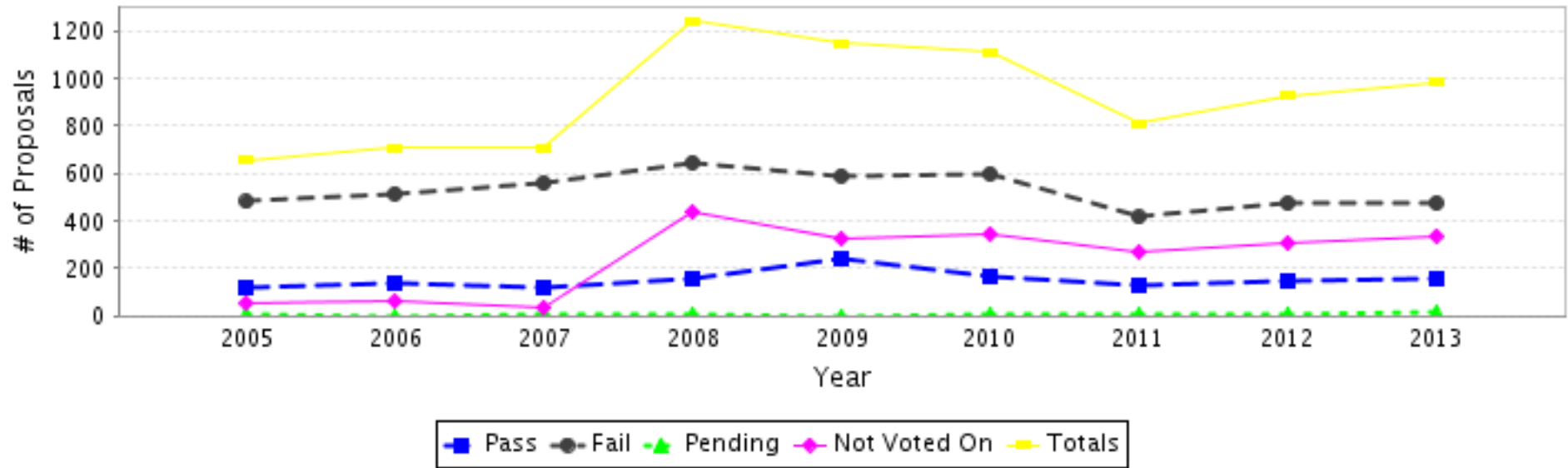
proposals only

Labor Issues

Exhibit C

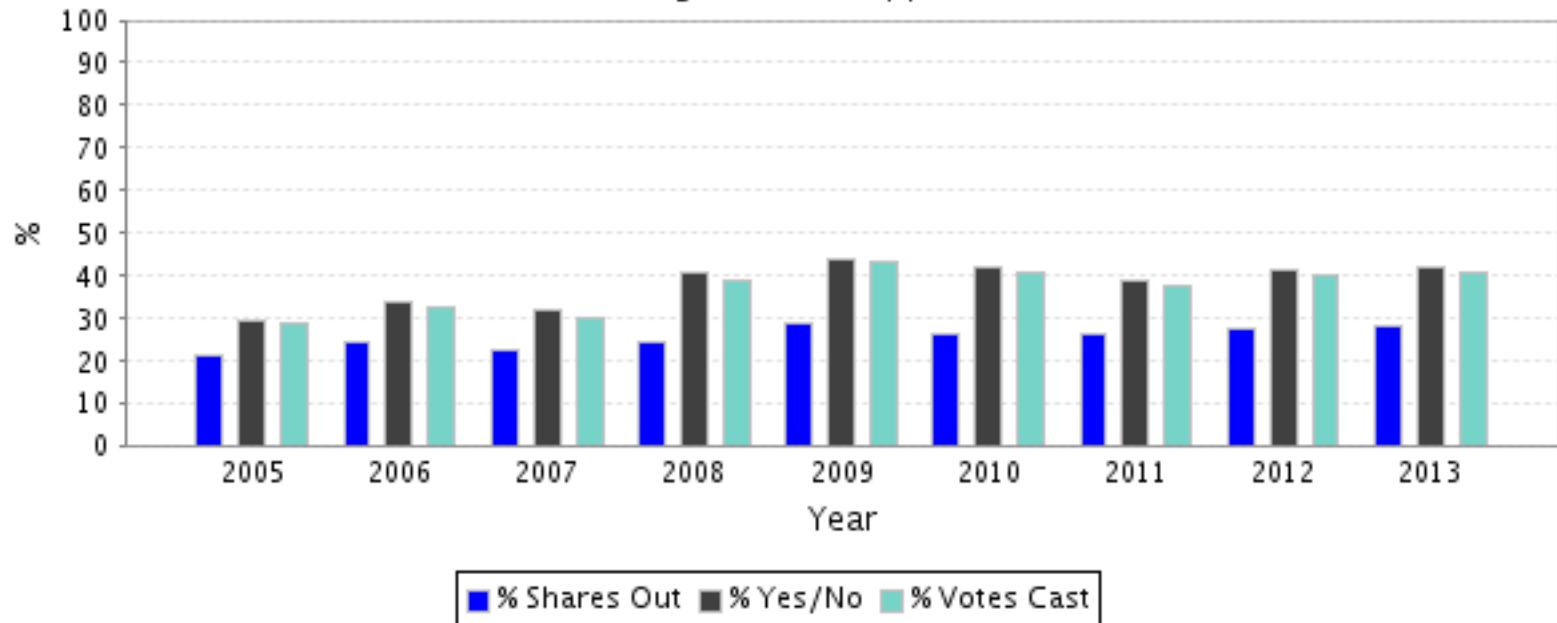
Results Summary and Trend Analysis
Shareholder Proposals*

Proposal Breakdown



Result	2005		2006		2007		2008		2009		2010		2011		2012		2013		2014		Totals	
	#	% of Total	#	% of Total	#	% of Total	#	% of Total	#	% of Total	#	% of Total	#	% of Total	#	% of Total	#	% of Total	#	% of Total	#	% of Total
Pass	119	18.17	133	18.89	116	16.41	157	12.64	237	20.66	166	14.97	129	15.91	146	15.73	158	16.11	0	0	1,361	16.4
Fail	480	73.28	512	72.73	557	78.78	644	51.85	588	51.26	597	53.83	414	51.05	473	50.97	474	48.32	0	0	4,739	57.1
Failed But Received a Majority of Yes/No Votes	11	1.68	22	3.12	15	2.12	74	5.96	64	5.58	72	6.49	19	2.34	52	5.60	37	3.77	0	0	366	4.4
Sub-Total (Voted On)	599	-	645	-	673	-	801	-	825	-	763	-	543	-	619	-	632	-	0	-	6,100	-
Pending/Results Never Disclosed	2	0.31	0	0	1	0.14	6	0.48	0	0	1	0.09	3	0.37	2	0.22	14	1.43	12	85.71	41	0.5
Not Voted On	54	8.24	59	8.38	33	4.67	435	35.02	322	28.07	345	31.11	265	32.68	307	33.08	335	34.15	2	14.29	2,157	26.0
Totals (All Proposals)	655	100.0	704	100.0	707	100.0	1,242	100.0	1,147	100.0	1,109	100.0	811	100.0	928	100.0	981	100.0	14	100.0	8,298	100.0

Average Level of Support



Average Vote Results (Votes For)

Result	2005		2006		2007		2008		2009		2010		2011		2012		2013		2014		Totals	
	%	#	%	#	%	#	%	#	%	#	%	#	%	#	%	#	%	#	%	#	%	#
% Shares Out	21.1	596	24.0	637	22.3	671	24.4	738	28.6	809	26.3	738	26.2	534	27.6	614	27.8	623	0.0	0	25.4	5,960
% Yes/No	29.5	592	33.6	638	31.5	673	40.3	732	43.9	788	41.7	725	38.7	523	40.9	591	42.0	611	0.0	0	38.2	5,873
% Votes Cast(1)	28.6	592	32.5	638	30.2	673	38.8	732	42.9	788	40.4	725	37.2	523	40.0	591	40.8	611	0.0	0	37.0	5,873
Average Vote Results (Votes Against)																						
Result	2005		2006		2007		2008		2009		2010		2011		2012		2013		2014		Totals	
	%	#	%	#	%	#	%	#	%	#	%	#	%	#	%	#	%	#	%	#	%	#
% Shares Out	48.8	592	46.2	637	47.5	671	41.0	727	37.9	787	39.9	725	41.4	523	41.2	591	40.7	610	0.0	0	42.6	5,863
% Yes/No	70.5	592	66.4	638	68.5	673	59.7	732	56.1	788	58.3	725	61.3	523	59.1	591	58.0	611	0.0	0	61.8	5,873
% Votes Cast(1)	67.2	592	63.1	638	64.3	673	55.5	732	53.1	788	54.4	725	57.0	523	56.2	591	54.9	611	0.0	0	58.2	5,873
Average Vote Results (Abstentions)																						
Result	2005		2006		2007		2008		2009		2010		2011		2012		2013		2014		Totals	
	%	#	%	#	%	#	%	#	%	#	%	#	%	#	%	#	%	#	%	#	%	#
% Shares Out	3.2	570	3.3	624	4.2	659	5.0	629	3.4	680	4.4	638	4.4	490	3.1	537	3.6	539	0.0	0	3.8	5,366
% Yes/No	4.9	570	5.0	624	6.9	659	8.2	629	5.4	678	7.2	638	7.5	489	4.8	536	5.6	537	0.0	0	6.2	5,360
% Votes Cast(1)	4.4	570	4.5	624	5.6	659	6.7	629	4.6	678	6.0	638	6.2	489	4.2	536	4.8	537	0.0	0	5.2	5,360
Average Vote Results (Broker Non-Votes)																						
Result	2005		2006		2007		2008		2009		2010		2011		2012		2013		2014		Totals	
	%	#	%	#	%	#	%	#	%	#	%	#	%	#	%	#	%	#	%	#	%	#
% Shares Out	0.2	469	0.1	524	0.1	544	0.1	481	0.1	518	0.1	594	0.1	464	0.1	532	0.1	543	0.0	0	0.1	4,669
% Yes/No	24.5	469	21.9	524	21.2	544	19.5	481	22.8	516	17.4	592	19.0	462	18.6	524	17.6	535	0.0	0	20.2	4,647
% Votes Cast(1)	22.7	469	20.8	523	19.7	544	18.2	479	21.6	516	16.4	585	18.0	451	17.9	502	17.3	503	0.0	0	19.1	4,572

(1) Include abstentions

Search Result

8298 proposal(s)

Search Criteria

Exclude proposals by Non-US companies, Shareholder proposals only

Exhibit D

	Company Name	Meeting Date	Proposal	Proponent	For as % Shares Out	For as % Yes/No	For as % Votes Cast ⁽¹⁾
1	The Estee Lauder Companies Inc.	11/12/2013	Sustainability Report	Sisters of St Francis of Assisi	0.95%	1.00%	0.97%
2	Domino's Pizza, Inc.	4/23/2013	Animal Rights	People for the Ethical Treatment of Animals Inc. (PETA)	0.68%	1.08%	0.84%
3	Papa John's International, Inc.	5/1/2013	Animal Rights	People for the Ethical Treatment of Animals Inc. (PETA)	0.77%	1.17%	0.86%
4	Cisco Systems, Inc.	11/19/2013	Miscellaneous	James McRitchie	0.88%	1.31%	1.30%
5	The Goldman Sachs Group, Inc.	5/23/2013	Hire Adviser to Evaluate Alternatives/Seek Sale or Liquidation of Company	Eric M. Fogel	0.95%	1.32%	1.31%
6	Elizabeth Arden, Inc.	11/6/2013	Animal Rights	Brook Dubman	1.40%	1.60%	1.52%
7	Dean Foods Company	5/15/2013	Animal Rights	People for the Ethical Treatment of Animals Inc. (PETA)	1.28%	2.01%	1.58%
8	American International Group, Inc.	5/15/2013	Limit Number of Boards Directors May Serve On ("over-boarding")	Kenneth Steiner	1.64%	2.29%	2.26%
9	Chesapeake Energy Corporation	6/14/2013	Reincorporate in Delaware	Gerald R. Armstrong	1.66%	2.72%	2.71%
10	Oracle Corporation	10/31/2013	Human Rights	Jing Zhao	2.02%	2.79%	2.55%
11	EQT Corporation	4/17/2013	Political Issues	Howard L. Hausman Trust	2.19%	2.92%	2.86%
12	Kohl's Corporation	5/16/2013	Animal Rights	The Humane Society of the United States	2.31%	3.01%	2.84%
13	Hasbro, Inc.	5/23/2013	Sustainability Report		1.98%	3.09%	2.53%
14	Abbott Laboratories	4/26/2013	Health Issues	David A. Rudd	1.91%	3.21%	2.68%
15	Citigroup Inc.	4/24/2013	Other Corporate Governance Issues	John C. Harrington	2.08%	3.28%	3.26%
16	Chevron Corporation	5/29/2013	Political Issues		2.22%	3.38%	3.23%
17	The Chubb Corporation	4/30/2013	Political Issues	NorthStar Asset Management, Inc.	2.70%	3.52%	3.39%
18	The Coca-Cola Company	4/24/2013	Human Rights	William C. Wardlaw, III	2.41%	3.55%	3.43%
19	Merck & Co., Inc.	5/28/2013	Other Social Issues Related	Donald J. Perrella	2.47%	3.69%	3.44%
20	General Electric Company	4/24/2013	Require Two Director Candidates for Each Board Seat	Martin Harangozo	2.22%	3.79%	3.74%

21	Ingles Markets, Incorporated	2/12/2013	Eliminate Dual Class Structure (Unequal Voting)	Kenneth Steiner	3.47%	3.80%	3.80%
22	Starbucks Corporation	3/20/2013	Political Issues	Harrington Investments, Inc.	2.64%	3.81%	3.73%
23	Hewlett-Packard Company	3/20/2013	Human Rights	Jing Zhao	2.39%	3.86%	3.39%
24	OGE Energy Corp.	5/16/2013	Reincorporate in Delaware	Gerald R. Armstrong	2.59%	3.87%	3.82%
25	Rite Aid Corporation	6/20/2013	Adopt Director Nominee Qualifications	Steven Krol	2.16%	3.88%	3.86%
26	The Goldman Sachs Group, Inc.	5/23/2013	Human Rights	Jing Zhao	2.56%	3.95%	3.54%
27	Chesapeake Energy Corporation	6/14/2013	Other Board Committee Related	New York State Common Retirement Fund	2.43%	3.98%	3.96%
28	The Western Union Company	5/30/2013	Political Issues	NorthStar Asset Management, Inc.	2.74%	4.10%	3.49%
29	Merck & Co., Inc.	5/28/2013	Political Issues	National Center for Public Policy Research	2.78%	4.15%	3.87%
30	FedEx Corporation	9/23/2013	Political Issues	NorthStar Asset Management, Inc.	2.84%	4.22%	3.55%
31	Bank of America Corporation	5/8/2013	Limit Number of Boards Directors May Serve On ("over-boarding")	Kenneth Steiner	2.25%	4.33%	4.29%
32	Seaboard Corporation	4/22/2013	Political Issues	The Humane Society of the United States	3.86%	4.34%	4.03%
33	The Home Depot, Inc.	5/23/2013	Environmental Issues	David Brook	2.87%	4.37%	4.02%
34	Netflix, Inc.	6/7/2013	Shareholder Nominee in Company Proxy (Proxy Access)	Myra K. Young	3.09%	4.38%	4.37%
35	Career Education Corporation	5/14/2013	Miscellaneous	New York City Retirement Systems	2.41%	4.42%	3.44%
36	General Electric Company	4/24/2013	Other Executive Compensation Issues	Timothy Robert	2.59%	4.43%	4.37%
37	Bank of America Corporation	5/8/2013	Political Issues	Stephen Johnson	2.32%	4.57%	4.42%
38	Praxair, Inc.	4/23/2013	Political Issues	NorthStar Asset Management, Inc.	3.27%	4.64%	4.03%
39	Charles River Laboratories International, Inc.	5/7/2013	Animal Rights	People for the Ethical Treatment of Animals Inc. (PETA)	3.45%	4.76%	4.12%
40	Dominion Resources, Inc.	5/3/2013	Environmental Issues	New York State Common Retirement Fund	2.97%	4.83%	4.62%
41	Kraft Foods Group, Inc.	5/22/2013	Health Issues	Camilla Madden Charitable Trust	3.08%	4.85%	4.50%
42	Ecolab Inc.	5/2/2013	Political Issues	NorthStar Asset Management, Inc.	3.64%	4.93%	4.44%

43	NextEra Energy, Inc.	5/23/2013	Environmental Issues	New York State Common Retirement Fund	3.21%	4.93%	4.66%
44	EMC Corporation	5/1/2013	Political Issues	NorthStar Asset Management, Inc.	3.32%	5.02%	4.75%
45	Newfield Exploration Company	5/2/2013	Adopt Director Nominee Qualifications	New York State Common Retirement Fund	3.98%	5.09%	4.94%
46	The Goldman Sachs Group, Inc.	5/23/2013	Shareholder Nominee in Company Proxy (Proxy Access)	James McRitchie	3.79%	5.25%	5.23%
47	Apple Inc.	2/27/2013	Human Rights	John C. Harrington	2.97%	5.61%	5.30%
48	E.I. DuPont de Nemours and Company	4/24/2013	Environmental Issues	Sisters of Charity of St. Elizabeth	3.55%	5.61%	5.25%
49	Family Dollar Stores, Inc.	1/17/2013	Labor Issues	AFL-CIO Reserve Fund	4.13%	5.71%	5.10%
50	Exxon Mobil Corporation	5/29/2013	Political Issues	John Maher Trust	3.51%	5.74%	5.56%
51	General Electric Company	4/24/2013	Adopt Term Limits for Directors	Dennis W. Rocheleau	3.37%	5.74%	5.67%
52	Exxon Mobil Corporation	5/29/2013	Limit Number of Boards Directors May Serve On ("over-boarding")	Kenneth Steiner	3.57%	5.75%	5.67%
53	Entergy Corporation	5/3/2013	Environmental Issues	New York State Common Retirement Fund	3.88%	5.91%	4.90%
54	General Mills, Inc.	9/24/2013	Environmental Issues		3.78%	5.99%	5.69%
55	Motorola Solutions, Inc.	5/6/2013	Sustainability Report	New York City Retirement Systems	3.93%	6.06%	4.83%
56	eBay Inc.	4/18/2013	Other Social Issues Related	The Park Foundation	4.02%	6.10%	5.09%
57	3M Company	5/14/2013	Political Issues	David Rodgers	3.71%	6.16%	5.43%
58	NiSource Inc.	5/14/2013	Other Executive Compensation Issues	Utility Workers Union of America General Fund	4.80%	6.17%	6.12%
59	The Goldman Sachs Group, Inc.	5/23/2013	Political Issues	Needmor Fund	4.08%	6.29%	5.64%
60	FedEx Corporation	9/23/2013	Shareholder Nominee in Company Proxy (Proxy Access)	Myra K. Young	5.03%	6.32%	6.28%
61	Johnson & Johnson	4/25/2013	Political Issues	NorthStar Asset Management, Inc.	4.14%	6.38%	6.17%
62	E.I. DuPont de Nemours and Company	4/24/2013	Increase Compensation Related Disclosure/Prepare Special Report	International Brotherhood of DuPont Workers	4.32%	6.66%	6.40%
63	Aetna Inc.	5/17/2013	Political Issues	Unitarian Universalist Association of Congregations	5.07%	6.71%	6.14%

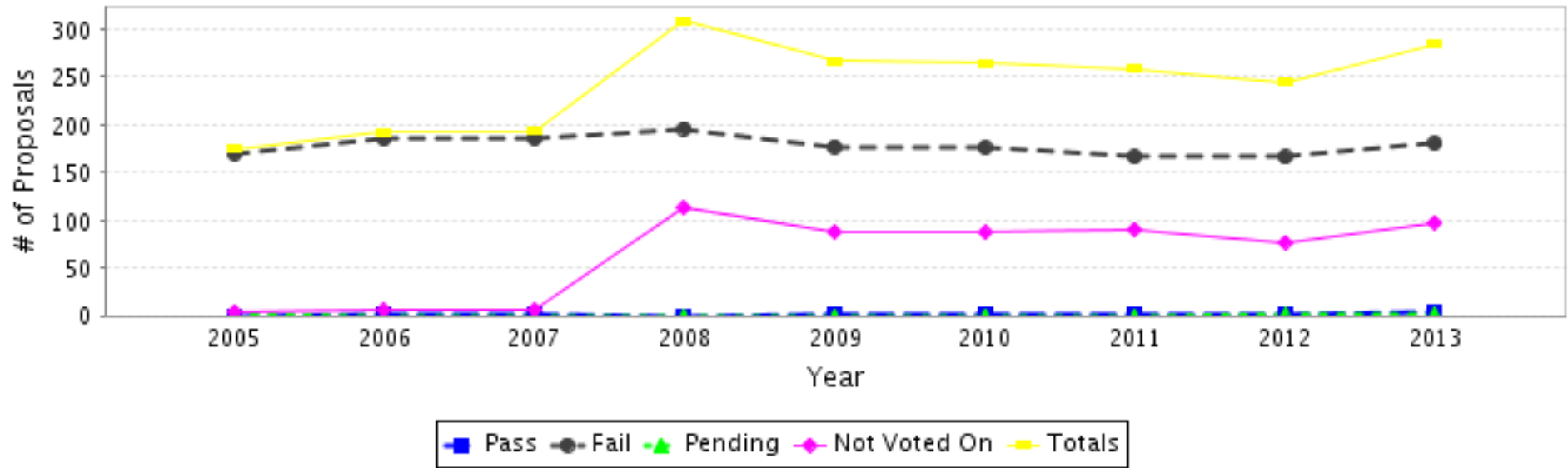
64	Caterpillar Inc.	6/12/2013	Human Rights	New York State Common Retirement Fund	3.68%	6.87%	6.07%
65	Dominion Resources, Inc.	5/3/2013	Environmental Issues		4.24%	6.90%	6.59%
66	Wal-Mart Stores, Inc.	6/7/2013	Require Equity be Retained by Executives/Director s for Specified Period		5.97%	7.02%	7.00%
67	Google Inc.	6/6/2013	Report on Management Succession Plans	The Laborers' District Council and Contractors' Pension Fund of Ohio	5.88%	7.05%	7.04%
68	Dominion Resources, Inc.	5/3/2013	Other Executive Compensation Issues		4.36%	7.08%	6.79%
69	Caterpillar Inc.	6/12/2013	Other Executive Compensation Issues	Nathan Cummings Foundation	4.20%	7.14%	6.92%
70	Chevron Corporation	5/29/2013	Environmental Issues		4.61%	7.25%	6.69%
71	Hewlett-Packard Company	3/20/2013	Human Rights	Board of Pensions of the Presbyterian Church (USA)	4.38%	7.31%	6.21%
72	Google Inc.	6/6/2013	Require Equity be Retained by Executives/Director s for Specified Period	James McRitchie	6.13%	7.35%	7.33%
73	Google Inc.	6/6/2013	Health Issues	Pax World Mutual Funds	5.83%	7.39%	6.98%
74	Whole Foods Market, Inc.	3/15/2013	Environmental Issues	As You Sow	5.01%	7.43%	6.82%
75	FedEx Corporation	9/23/2013	Other Takeover Defense Related (Reduce)	Equality Network Foundation	6.00%	7.54%	7.49%
76	Chevron Corporation	5/29/2013	Environmental Issues		4.81%	7.57%	6.99%
77	Monsanto Company	1/31/2013	Sustainability Report	Harrington Investments, Inc.	5.43%	7.62%	6.78%
78	McDonald's Corporation	5/23/2013	Other Executive Compensation Issues	Marco Consulting Group Trust I	4.62%	7.68%	7.29%
79	Northrop Grumman Corporation	5/15/2013	Political Issues	Congregation of the Sisters of St. Agnes	5.94%	7.80%	7.48%
80	CIGNA Corporation	4/24/2013	Political Issues	AFL-CIO Reserve Fund	5.02%	7.93%	6.17%
81	The Interpublic Group of Companies, Inc.	5/23/2013	Labor Issues	New York City Retirement Systems	5.47%	7.93%	6.67%
82	McDonald's Corporation	5/23/2013	Health Issues	John C. Harrington	4.00%	8.15%	6.30%

83	JPMorgan Chase & Co.	5/21/2013	Require Equity be Retained by Executives/Directors for Specified Period	Ray T. Chevedden and Veronica G. Chevedden Family Trust	6.08%	8.33%	8.17%
84	Oracle Corporation	10/31/2013	Other Corporate Governance Issues	Equality Network Foundation	6.89%	8.72%	8.69%
85	Berkshire Hathaway Inc.	5/4/2013	Environmental Issues	Robert L. Berridge	5.73%	8.78%	8.15%
86	Bank of America Corporation	5/8/2013	Shareholder Nominee in Company Proxy (Proxy Access)	John C. Harrington	4.56%	8.79%	8.70%
87	Dean Foods Company	5/15/2013	Separate Chairman and CEO Positions/Independent Chairman	AFL-CIO Equity Index Fund	6.98%	8.89%	8.62%
88	Sirius XM Holdings Inc.	5/21/2013	Report on Management Succession Plans	Central Laborers' Pension Fund	6.45%	8.91%	8.71%
89	The Allstate Corporation	5/21/2013	Political Issues	The American Federation of Labor and Congress of Industrial Organizations	5.96%	9.32%	7.72%
90	Franklin Resources, Inc.	3/13/2013	Human Rights	William L. Rosenfeld	7.03%	9.36%	8.67%
91	FirstEnergy Corp.	5/21/2013	Cap/Restrict Executive Compensation	Utility Workers Union of America General Fund	7.07%	9.42%	9.27%
92	Mondelez International, Inc.	5/21/2013	Environmental Issues	Margaret Law	5.87%	9.53%	8.48%
93	JPMorgan Chase & Co.	5/21/2013	Human Rights	William L. Rosenfeld	6.01%	9.55%	8.06%
94	Whole Foods Market, Inc.	3/15/2013	Separate Chairman and CEO Positions/Independent Chairman	James McRitchie	7.06%	9.70%	9.62%
95	Target Corporation	6/12/2013	Environmental Issues	Wallace Global Fund	6.05%	9.71%	7.85%
96	Lockheed Martin Corporation	4/25/2013	Political Issues	The Sisters of St. Francis of Philadelphia	7.76%	9.74%	9.35%
97	Choice Hotels International, Inc.	4/26/2013	Environmental Issues	Stephen Sacks	8.63%	9.81%	9.45%
98	JPMorgan Chase & Co.	5/21/2013	Political Issues	The Sisters of St. Francis of Philadelphia	6.10%	9.90%	8.19%

Exhibit E

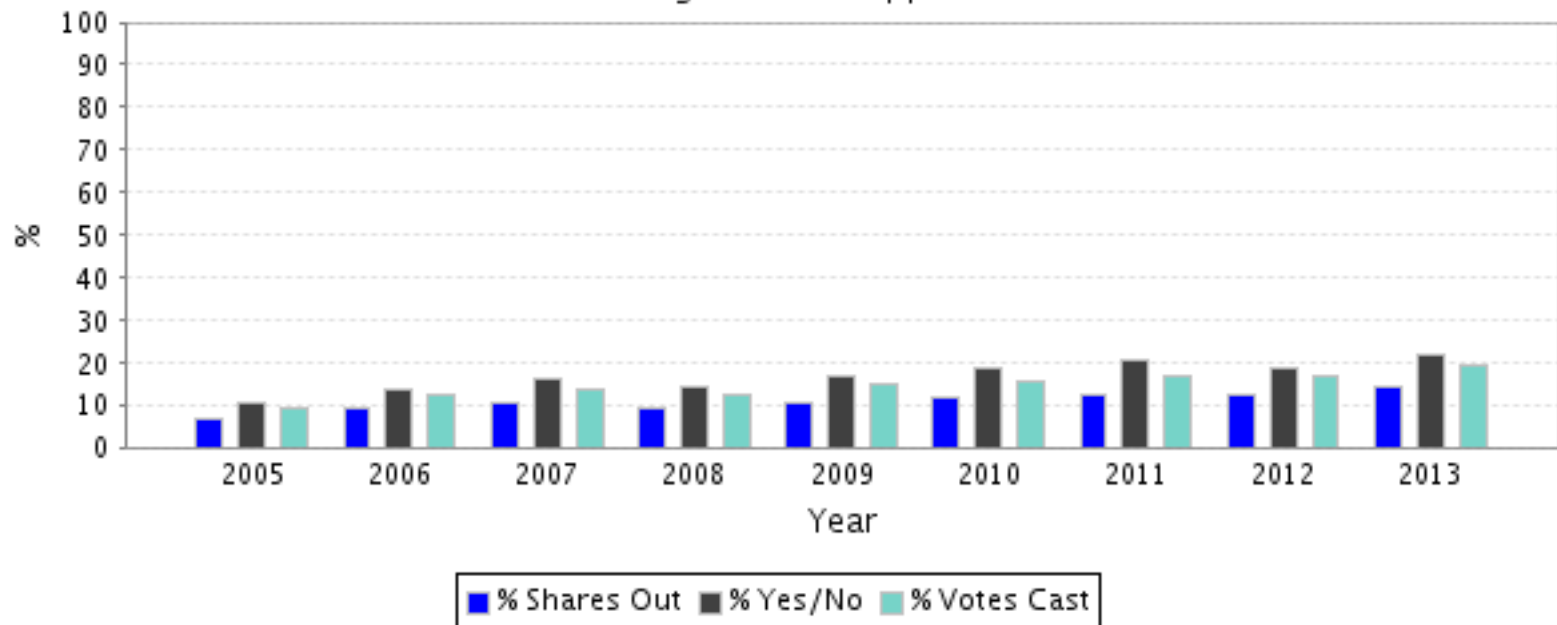
Results Summary and Trend Analysis
Shareholder Proposals: Animal Rights, Environmental Issues, Health Issues*

Proposal Breakdown



Result	2005		2006		2007		2008		2009		2010		2011		2012		2013		2014		Totals	
	#	% of Total	#	% of Total	#	% of Total	#	% of Total	#	% of Total	#	% of Total	#	% of Total	#	% of Total	#	% of Total	#	% of Total	#	% of Total
Pass	0	0	2	1.04	1	0.52	0	0	2	0.75	1	0.38	2	0.77	1	0.41	4	1.41	0	0	13	0.6
Fail	170	97.14	185	96.35	186	96.37	196	63.43	177	66.29	176	66.67	166	64.09	166	67.76	180	63.38	0	0	1,602	73.0
Failed But Received a Majority of Yes/No Votes	1	0.57	0	0	2	1.04	2	0.65	0	0	1	0.38	3	1.16	1	0.41	1	0.35	0	0	11	0.5
Sub-Total (Voted On)	170	-	187	-	187	-	196	-	179	-	177	-	168	-	167	-	184	-	0	-	1,615	-
Pending/Results Never Disclosed	1	0.57	0	0	0	0	0	0	0	0	0	0	0	0	1	0.41	2	0.70	6	100.00	10	0.5
Not Voted On	4	2.29	5	2.60	6	3.11	113	36.57	88	32.96	87	32.95	91	35.14	77	31.43	98	34.51	0	0	569	25.9
Totals (All Proposals)	175	100.0	192	100.0	193	100.0	309	100.0	267	100.0	264	100.0	259	100.0	245	100.0	284	100.0	6	100.0	2,194	100.0

Average Level of Support



Average Vote Results (Votes For)

Result	2005		2006		2007		2008		2009		2010		2011		2012		2013		2014		Totals	
	%	#	%	#	%	#	%	#	%	#	%	#	%	#	%	#	%	#	%	#	%	#
% Shares Out	6.6	170	8.9	187	10.2	187	9.1	196	10.4	176	11.4	177	12.5	168	12.3	166	14.1	183	0.0	0	10.6	1,610
% Yes/No	10.2	170	13.6	187	15.7	187	14.0	196	16.7	177	18.5	177	20.3	168	18.8	166	21.7	184	0.0	0	16.6	1,612
% Votes Cast(1)	9.1	170	12.2	187	13.6	187	12.0	196	14.6	177	15.3	177	16.9	168	16.6	166	18.9	184	0.0	0	14.3	1,612
Average Vote Results (Votes Against)																						
Result	2005		2006		2007		2008		2009		2010		2011		2012		2013		2014		Totals	
	%	#	%	#	%	#	%	#	%	#	%	#	%	#	%	#	%	#	%	#	%	#
% Shares Out	60.4	170	57.3	187	55.0	187	56.0	196	52.9	176	50.9	177	49.1	168	52.9	166	51.8	183	0.0	0	54.1	1,610
% Yes/No	89.8	170	86.4	187	84.3	187	86.0	196	83.3	177	81.5	177	79.7	168	81.2	166	78.3	184	0.0	0	83.4	1,612
% Votes Cast(1)	81.7	170	78.4	187	73.6	187	74.3	196	72.9	177	68.5	177	68.1	168	72.6	166	69.5	184	0.0	0	73.3	1,612
Average Vote Results (Abstentions)																						
Result	2005		2006		2007		2008		2009		2010		2011		2012		2013		2014		Totals	
	%	#	%	#	%	#	%	#	%	#	%	#	%	#	%	#	%	#	%	#	%	#
% Shares Out	7.0	160	7.2	179	9.9	183	10.6	190	9.4	172	12.2	175	11.0	165	8.0	166	8.8	183	0.0	0	9.4	1,573
% Yes/No	11.2	160	11.4	179	15.6	183	17.1	190	15.5	172	20.4	175	18.8	165	12.6	166	13.9	183	0.0	0	15.2	1,573
% Votes Cast(1)	9.8	160	9.8	179	13.1	183	14.1	190	13.0	172	16.4	175	15.3	165	10.7	166	11.7	183	0.0	0	12.7	1,573
Average Vote Results (Broker Non-Votes)																						
Result	2005		2006		2007		2008		2009		2010		2011		2012		2013		2014		Totals	
	%	#	%	#	%	#	%	#	%	#	%	#	%	#	%	#	%	#	%	#	%	#
% Shares Out	0.1	137	0.1	164	0.1	164	0.1	165	0.1	141	0.1	167	0.1	164	0.1	165	0.1	182	0.0	0	0.1	1,449
% Yes/No	28.9	137	21.8	164	23.0	164	20.3	165	24.2	141	19.5	167	21.6	164	20.4	165	18.1	182	0.0	0	21.8	1,449
% Votes Cast(1)	24.1	137	19.6	164	19.9	164	17.4	165	20.9	141	16.3	167	18.2	164	18.2	165	16.0	182	0.0	0	18.8	1,449

(1) Include abstentions

Search Result

2194 proposal(s)

Search Criteria

Exclude proposals by Non-US companies, Shareholder proposals only

Animal Rights, Environmental Issues, Health Issues, Human Rights, Labor

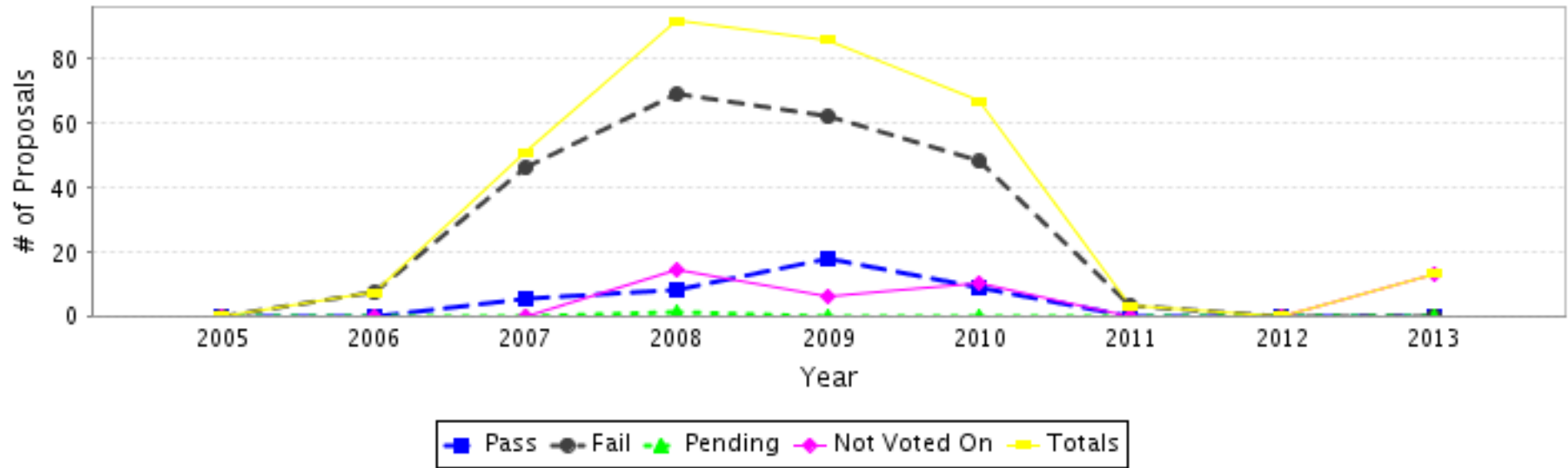
Issues, Add Minorities/Women to Board (board diversity), Political Issues, Other

Social Issues Related, Sustainability Report

Exhibit F

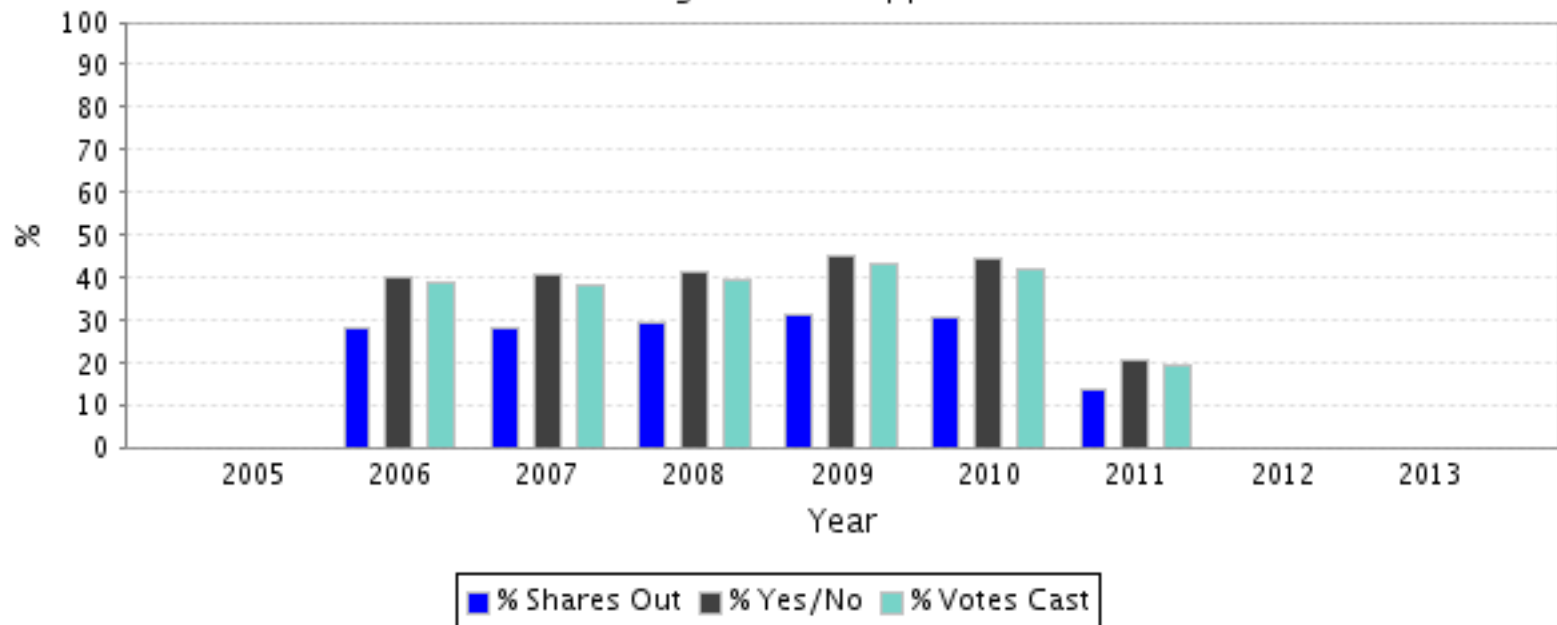
Results Summary and Trend Analysis
Shareholder Proposals: Advisory Vote on Compensation ("say on pay")*

Proposal Breakdown



Result	2005		2006		2007		2008		2009		2010		2011		2012		2013		Totals	
	#	% of Total	#	% of Total	#	% of Total	#	% of Total	#	% of Total	#	% of Total	#	% of Total	#	% of Total	#	% of Total	#	% of Total
Pass	0	0	0	0	5	9.80	8	8.70	18	20.93	9	13.43	0	0	0	0	0	0	40	12.5
Fail	0	0	7	100.00	46	90.20	69	75.00	62	72.09	48	71.64	3	100.00	0	0	0	0	235	73.7
Failed But Received a Majority of Yes/No Votes	0	0	0	0	2	3.92	2	2.17	6	6.98	5	7.46	0	0	0	0	0	0	15	4.7
Sub-Total (Voted On)	0	-	7	-	51	-	77	-	80	-	57	-	3	-	0	-	0	-	275	-
Pending/Results Never Disclosed	0	0	0	0	0	0	1	1.09	0	0	0	0	0	0	0	0	0	0	1	0.3
Not Voted On	0	0	0	0	0	0	14	15.22	6	6.98	10	14.93	0	0	0	0	13	100.00	43	13.5
Totals (All Proposals)	0	100.0	7	100.0	51	100.0	92	100.0	86	100.0	67	100.0	3	100.0	0	100.0	13	100.0	319	100.0

Average Level of Support



Average Vote Results (Votes For)

Result	2005		2006		2007		2008		2009		2010		2011		2012		2013		Totals	
	%	#	%	#	%	#	%	#	%	#	%	#	%	#	%	#	%	#	%	#
% Shares Out	0.0	0	28.3	7	28.1	51	29.0	77	30.9	80	30.4	57	13.6	3	0.0	0	0.0	0	29.5	275
% Yes/No	0.0	0	40.1	7	40.6	51	41.2	77	45.3	80	44.0	57	20.2	3	0.0	0	0.0	0	42.6	275
% Votes Cast(1)	0.0	0	38.9	7	38.2	51	39.0	77	43.1	80	41.6	57	19.0	3	0.0	0	0.0	0	40.4	275
Average Vote Results (Votes Against)																				
Result	2005		2006		2007		2008		2009		2010		2011		2012		2013		Totals	
	%	#	%	#	%	#	%	#	%	#	%	#	%	#	%	#	%	#	%	#
% Shares Out	0.0	0	42.5	7	41.9	51	42.0	77	37.3	80	38.9	57	57.0	3	0.0	0	0.0	0	40.2	275
% Yes/No	0.0	0	59.9	7	59.4	51	58.8	77	54.7	80	56.0	57	79.8	3	0.0	0	0.0	0	57.4	275
% Votes Cast(1)	0.0	0	58.0	7	56.1	51	55.7	77	52.3	80	53.0	57	76.6	3	0.0	0	0.0	0	54.5	275
Average Vote Results (Abstentions)																				
Result	2005		2006		2007		2008		2009		2010		2011		2012		2013		Totals	
	%	#	%	#	%	#	%	#	%	#	%	#	%	#	%	#	%	#	%	#
% Shares Out	0.0	0	2.2	7	4.3	50	4.0	76	3.4	79	4.1	57	3.2	3	0.0	0	0.0	0	3.8	272
% Yes/No	0.0	0	3.2	7	6.4	50	5.9	76	5.2	79	6.1	57	4.6	3	0.0	0	0.0	0	5.7	272
% Votes Cast(1)	0.0	0	3.1	7	5.8	50	5.4	76	4.6	79	5.4	57	4.3	3	0.0	0	0.0	0	5.2	272
Average Vote Results (Broker Non-Votes)																				
Result	2005		2006		2007		2008		2009		2010		2011		2012		2013		Totals	
	%	#	%	#	%	#	%	#	%	#	%	#	%	#	%	#	%	#	%	#
% Shares Out	0.0	0	0.2	6	0.1	44	0.1	64	0.1	62	0.1	53	0.1	2	0.0	0	0.0	0	0.1	231
% Yes/No	0.0	0	26.4	6	19.2	44	18.4	64	23.4	62	16.9	53	19.7	2	0.0	0	0.0	0	19.8	231
% Votes Cast(1)	0.0	0	25.5	6	17.9	44	17.4	64	22.5	62	16.0	53	18.4	2	0.0	0	0.0	0	18.8	231

(1) Include abstentions

Search Result

319 proposal(s)

Search Criteria

Exclude proposals by Non-US companies, Shareholder proposals only

Advisory Vote on Compensation ("say on pay")