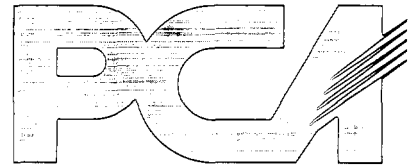


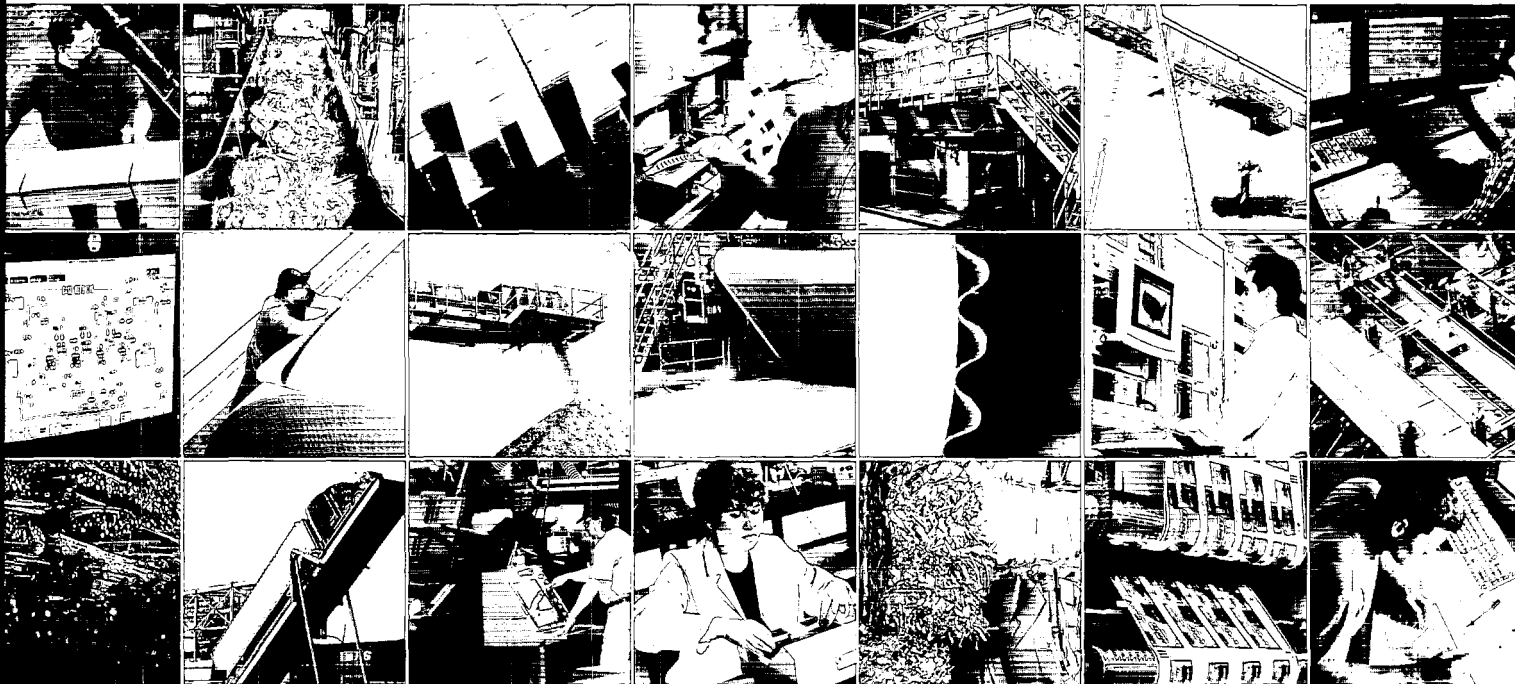


03056044

1-15399
ARIS



P.E,
12-31-02



PROCESSED

APR 17 2003

THOMSON
FINANCIAL

PACKAGING CORPORATION OF AMERICA

2002 Annual Report

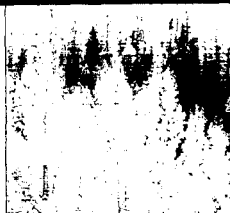
PCA is a leading producer of containerboard and corrugated packaging products,
and we are committed to our

Customers to provide the best value and be easy to do business with.

Shareholders to ensure that everything we do revolves around
the concept of creating shareholder value.

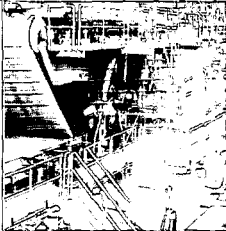
Employees to provide a safe and challenging work environment
where people can make the difference.

| | |
|--|----|
| Company Overview | 1 |
| To Our Shareholders — Letter from the CEO | 2 |
| Management's Discussion of Financial Responsibility | 4 |
| SEC Form 10-K | |
| Operations and Locations | 7 |
| Board of Directors and Officers | 11 |
| Appendix: Information on the Internet | 12 |



Fiber Supply ▫ 140,000 Acres Cutting Rights

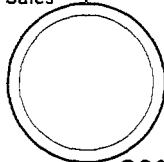
Woodlands ▫ 600,000 Acres Under Supply Agreements



Mills ▫ 4 Mills
▫ 2.2 Million Tons Capacity



20% Outside Sales



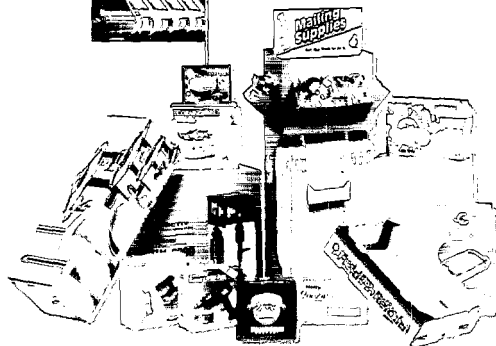
80% Integration



Corrugated Products ▫ 64 Plants
▫ 27.5 BSF



Sales: \$1.7 Billion



Company Overview

PCA is focused on a single line of business, containerboard and corrugated packaging products.

We are the sixth largest manufacturer of containerboard and corrugated packaging products in the United States based on production capacity, as reported in *Pulp and Paper's 2002 North American Fact Book*.

We produced about 2.2 million tons of containerboard in 2002, and shipped about 27.5 billion square feet (BSF) of corrugated products, which produced net sales of \$1.7 billion.

PCA manufactures a broad range of linerboard and corrugating medium at our four containerboard mills.

We produce a wide variety of corrugated packaging products at our 64 corrugated products plants, including:

- Conventional shipping containers used to protect and transport manufactured goods
- Multi-color boxes and displays with strong visual appeal used to merchandise the product in retail locations
- Special design/application meat and produce boxes used in the food and agriculture industry

PCA is highly integrated, converting approximately 80% of the containerboard it produces into finished corrugated containers for sale to a broad base of both local and national customers.

Corporate headquarters are located in Lake Forest, Illinois, a suburb approximately 30 miles north of downtown Chicago.

PCA's common stock is listed on the New York Stock Exchange under the ticker symbol "PKG."

To Our Shareholders



Paul T. Stecko

Chairman and Chief Executive Officer

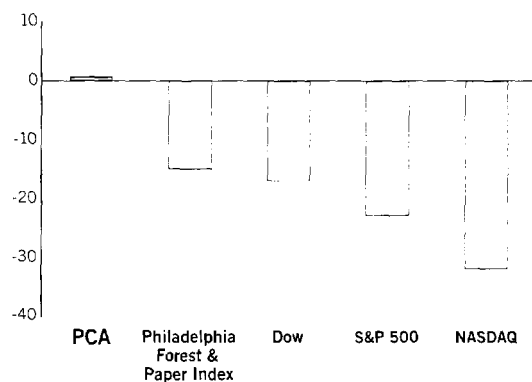


In 2002, PCA continued to make considerable progress in the face of another difficult and challenging year. The U.S. economy remained both sluggish and uncertain, with the industry experiencing another year of weak demand for corrugated products. We did manage to get a price increase in August, but containerboard prices were still significantly lower than in 2001. Certain costs such as fiber, energy and medical expenses also increased appreciably. As a result, our profitability declined in 2002.

On a more positive note, the industry did continue to demonstrate supply discipline in the face of weak demand, and industry consolidation and rationalization of capacity also continued. Industry analysts have reported that over 1.15 million tons of containerboard capacity was removed from the industry in 2002, bringing the total capacity removed since 1998 to almost 5.5 million tons.

PCA responded to these difficult economic conditions by continuing to focus on the basics of the business: serving our customers well, keeping controllable costs down and using the cash that we generate wisely. We believe that all of these things lead to better shareholder value. For the year, PCA's stock price closed up 0.5% at \$18.24 per share while all major averages and indexes were down dramatically.

2002 Stock Performance (%)



For 2002, our net income was \$48 million or \$0.45 per share compared to \$106 million or \$0.98 per share in 2001, a \$0.53 per share decline. The single biggest factor impacting earnings was, by far, lower prices for containerboard and corrugated products, which lowered full year earnings by \$0.56 per share.

Other items adversely impacting 2002 earnings were higher recycled fiber prices, medical costs and depreciation. The negative impact of these items was, how-

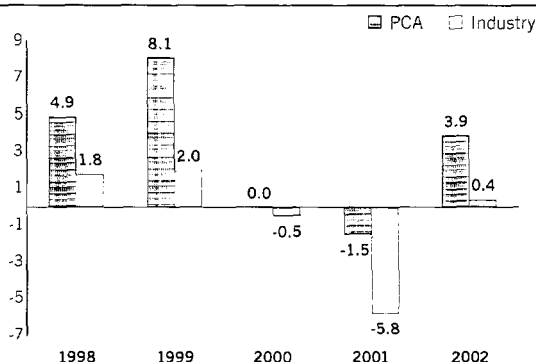
ever, more than offset by increased containerboard and corrugated products volume and lower interest expense.

It should also be noted that PCA's 2002 earnings did not benefit, as many companies did, from the changes in accounting treatment for goodwill amortization since PCA has essentially no goodwill recorded on its balance sheet. Alternatively, PCA will not be faced with the potential impairment charges associated with carrying goodwill as an asset on its balance sheet.

PCA continued to make considerable progress in building a strong and growing customer base, even in a weak economy. We've worked hard to show our customers that we're easy to do business with and provide the best value. As a result, our corrugated products volume was up 3.9% per workday for the year compared to an industry increase of only 0.4% per workday. This marks the fifth consecutive year we have outperformed the industry, four of which were by a wide margin.

PCA Corrugated Products Growth Has Consistently Outperformed the Industry

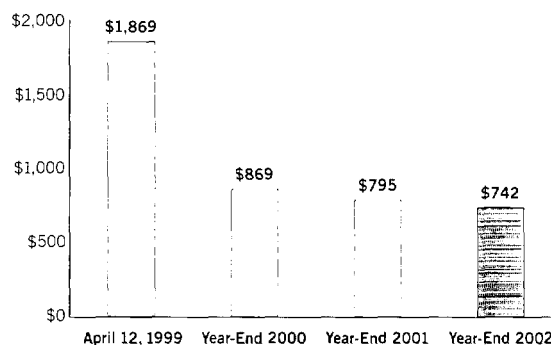
Year-Over-Year Volume Change (%)



Source: FBA Data for Industry

PCA also continued to generate strong cash flow and improve its financial position. For the year, we generated \$240 million in cash from operating activities. Capital expenditures for 2002 were \$107 million. The remaining \$133 million of available cash was used to pay down \$53 million of long-term debt and repurchase 1.9 million shares of our common stock for \$33 million. Cash-on-hand, which also included \$2 million from non-operating activities, increased by \$49 million to \$131 million. In the past three years, PCA has generated \$895 million in cash from operations, of which \$368 million was used for capital expenditures. Since becoming a stand-alone company in April 1999, we have reduced our total long-term debt by \$1.13 billion.

PCA Long-Term Debt* (\$ Millions)



* PCA long-term debt plus receivables revolver

These debt reduction efforts have dramatically lowered our interest expense and have transformed PCA's financial position and balance sheet into one of the strongest in the industry. Our credit ratios, commonly used by the ratings agencies, are very strong with a year-end debt to EBITDA ratio of 2.5 times, EBITDA to interest at 4.6 times and our debt to total capital at 48%.

PCA enters 2003 with considerable operating strengths. We start with an operationally excellent, low-cost containerboard manufacturing system, which possesses both energy and fiber flexibility. Our level of containerboard integration with our own corrugated products plants is high at 80%. And finally, our geographic presence and coverage is considerable, with 64 corrugated products plants across the U.S. serving a large and diverse customer base. This is very important, since our business is both freight and customer service intensive.

While we have not yet seen a meaningful improvement in the U.S. economy, one bright spot that has emerged has been the continual weakening of the dollar during this past year. This should make U.S. containerboard more price competitive in foreign markets. It should also help reduce the U.S. trade deficit which, in turn, should help improve domestic corrugated demand. Both of these developments would be big positives for the containerboard and corrugated products industry.

In closing, we recognize that our challenges in 2003 remain great and are tied, in large part, to the U.S. economy. With that said, be assured that our focus, commitment and efforts on improving shareholder value will continue. Operational excellence and customer focus will remain the keys to our success in 2003 as will our emphasis on the generation and effective utilization of free cash.

P.T. Stecko

Chairman and Chief Executive Officer

PACKAGING CORPORATION OF AMERICA

Management's Discussion of Financial Responsibility

Management is responsible for the preparation, integrity and objectivity of the financial statements and other financial data in this report. The financial statements have been prepared in conformity with generally accepted accounting principles using the best available information and applying judgments.

Management believes that Packaging Corporation of America's system of internal controls is adequate to provide reasonable assurance as to the integrity and reliability of the financial statements and to safeguard Company assets. The internal control system is supported by written policies and procedures, provides for appropriate division of responsibilities, includes careful selection and training of professional financial managers to oversee its functioning, and is monitored through a comprehensive, risk-based internal audit program. Packaging Corporation of America is dedicated to maintaining high standards of ethics, integrity and social responsibility in the conduct of its business, and uses ongoing education, communications and review programs to support this dedication.

The Company's financial statements have been audited by Ernst & Young LLP, independent auditors who were selected by the audit committee of the Board of Directors. Management has made available to Ernst & Young LLP all of the Company's financial and other records and data, allowing them to provide an objective, independent assessment as to the fairness of reporting of operating results and financial condition. Their report is included in the Company's 2002 Annual Report on Form 10-K, which follows.

The Board of Directors, through its audit committee consisting solely of independent directors, meets with Ernst & Young LLP, representatives of management and the Company's internal auditors to evaluate, on behalf of shareholders, the responsibilities and activities of each group, and to discuss accounting, auditing, financial and other matters. Both the internal and independent auditors have unrestricted access to the audit committee to discuss their audits and the quality of the Company's financial reporting and internal control system.



Paul T. Stecko

Chairman and Chief Executive Officer



Richard B. West

Senior Vice President, Chief Financial Officer
and Corporate Secretary

SECURITIES AND EXCHANGE COMMISSION

Washington, D.C. 20549

FORM 10-K

ANNUAL REPORT PURSUANT TO SECTION 13 OR 15(d)
OF THE SECURITIES EXCHANGE ACT OF 1934

For the fiscal year ended December 31, 2002

Commission file number 1-15399

PACKAGING CORPORATION OF AMERICA

(Exact Name of Registrant as Specified in its Charter)

| | |
|---|--|
| Delaware (State or Other Jurisdiction of Incorporation or Organization) | 36-4277050 (I.R.S. Employer Identification No.) |
| 1900 West Field Court, Lake Forest, Illinois (Address of Principal Executive Offices) | 60045 (Zip Code) |
| Registrant's telephone number, including area code (847) 482-3000 | |

Securities registered pursuant to Section 12(b) of the Act:

| <u>Title of Each Class</u> | <u>Name of Each Exchange on Which Registered</u> |
|--------------------------------|--|
| Common Stock, \$0.01 par value | New York Stock Exchange |

Securities registered pursuant to Section 12(g) of the Act:

None

Indicate by check mark whether the Registrant (1) has filed all reports required to be filed by Section 13 or 15(d) of the Securities Exchange Act of 1934 during the preceding 12 months (or for such shorter period that the Registrant was required to file such reports), and (2) has been subject to such filing requirements for the past 90 days. Yes No

Indicate by check mark if disclosure of delinquent filers pursuant to Item 405 of Regulation S-K is not contained herein, and will not be contained, to the best of Registrant's knowledge, in definitive proxy or information statements incorporated by reference in Part III of this Form 10-K or any amendment to this Form 10-K.

Indicate by check mark whether the registrant is an accelerated filer (as defined in Rule 12b-2 of the Exchange Act). Yes No

At June 28, 2002, the last business day of the Registrant's most recently completed second fiscal quarter, the aggregate market value of the Registrant's common equity held by nonaffiliates was approximately \$1,194,557,459. This calculation of market value has been made for the purposes of this report only and should not be considered as an admission or conclusion by the Registrant that any person is in fact an affiliate of the Registrant.

On March 18, 2003, there were 104,580,090 shares of Common Stock outstanding.

Documents Incorporated by Reference

Specified portions of the Proxy Statement for the Registrant's 2003 Annual Meeting of Shareholders are incorporated by reference to the extent indicated in Part III of this Form 10-K.

INDEX

| | <u>Page</u> |
|---|-------------|
| PART I | |
| Item 1. Business | 3 |
| Item 2. Properties | 11 |
| Item 3. Legal Proceedings | 11 |
| Item 4. Submission of Matters to a Vote of Security Holders | 12 |
| PART II | |
| Item 5. Market for Registrant's Common Stock and Related Shareholder Matters | 12 |
| Item 6. Selected Financial Data | 13 |
| Item 7. Management's Discussion and Analysis of Financial Condition and Results of Operations | 15 |
| Item 7A. Quantitative and Qualitative Disclosures About Market Risk | 24 |
| Item 8. Financial Statements and Supplementary Data | 24 |
| Item 9. Changes in and Disagreements with Accountants on Accounting and Financial Disclosures | 24 |
| PART III | |
| Item 10. Directors and Executive Officers of the Registrant | 25 |
| Item 11. Executive Compensation | 26 |
| Item 12. Security Ownership of Certain Beneficial Owners and Management | 26 |
| Item 13. Certain Relationships and Related Transactions | 26 |
| Item 14. Controls and Procedures | 26 |
| PART IV | |
| Item 15. Exhibits, Financial Statement Schedules and Reports on Form 8-K | 27 |
| SIGNATURES | 30 |
| CERTIFICATIONS | 31 |
| INDEX TO FINANCIAL STATEMENTS | F-1 |

PART I

Item 1. BUSINESS

General

Packaging Corporation of America, or PCA, is the sixth largest producer of containerboard and corrugated products in the United States, based on production capacity as reported in the Pulp & Paper 2002 North American Fact Book. With 2002 net sales of \$1.7 billion, PCA produced about 2.2 million tons of containerboard, about 80% of which was consumed in our corrugated products manufacturing plants, and shipped about 27.5 billion square feet (BSF) of corrugated products.

Containerboard Production and Corrugated Shipments

| | | <u>First Quarter</u> | <u>Second Quarter</u> | <u>Third Quarter</u> | <u>Fourth Quarter</u> | <u>Full Year</u> |
|---|------|--------------------------|---------------------------|--------------------------|---------------------------|----------------------|
| Containerboard Production (thousand tons) | 2002 | 520 | 548 | 578 | 558 | 2,204 |
| | 2001 | 502 | 519 | 561 | 543 | 2,125 |
| Corrugated Shipments (BSF) | 2002 | 6.5 | 7.2 | 7.3 | 6.5 | 27.5 |
| | 2001 | 6.6 | 6.8 | 6.8 | 6.3 | 26.5 |

In 2002, we produced about 1.4 million tons of kraft linerboard at our mills located in Counce, Tennessee and Valdosta, Georgia. We also produced about 0.8 million tons of semi-chemical corrugating medium at our mills located in Tomahawk, Wisconsin and Filer City, Michigan. We currently lease the cutting rights to approximately 140,000 acres of timberland located near our Counce and Valdosta mills. We also have supply agreements on about 600,000 of the 800,000 acres of timberland we sold during 1999 and 2000.

Our converting operations produce a wide variety of corrugated packaging products, including conventional shipping containers used to protect and transport manufactured goods. We also produce multi-color boxes and displays with strong visual appeal that help to merchandise the packaged product in retail locations. Finally, we are a large producer of meat boxes and wax-coated boxes for the agricultural industry.

Corporate Developments

On April 12, 1999, Pactiv Corporation, formerly known as Tenneco Packaging Inc., a wholly owned subsidiary of Tenneco Inc., sold its containerboard and corrugated products business to PCA, an entity formed by Madison Dearborn Partners, LLC, a private equity investment firm, in January 1999, for \$2.2 billion, consisting of \$246.5 million in cash, the assumption of \$1,760.0 million of debt incurred by Pactiv immediately prior to the contribution, and a 45% common equity interest in PCA valued at \$193.5 million. PCA Holdings LLC, an entity organized and controlled by Madison Dearborn, acquired the remaining 55% common equity interest in PCA for \$236.5 million in cash, which was used to finance in part the transactions.

The financing of the transactions consisted of (1) borrowings under a new \$1,469.0 million senior credit facility for which J.P. Morgan Securities Inc. and BT Alex. Brown Incorporated (the predecessor to Deutsche Banc Alex. Brown) were co-lead arrangers, (2) the offering of \$550.0 million of 9³/₈% senior subordinated notes due 2009, and \$100.0 million of 12³/₈% senior exchangeable preferred stock due 2010, (3) a cash equity investment of \$236.5 million by PCA Holdings LLC and (4) an equity investment by Pactiv valued at \$193.5 million. As required by their terms, the \$550.0 million of senior subordinated notes and \$100.0 million of senior exchangeable preferred stock issued in the April 12, 1999 transactions were exchanged for publicly registered securities in the same amounts in a registered exchange offer completed in October 1999.

The senior credit facility was entered into to finance in part the transactions and to pay related fees and expenses and to provide future borrowings to PCA for general corporate purposes, including working capital. The senior credit facility initially consisted of three term loan facilities in an original aggregate principal amount of \$1,219.0 million and a revolving credit facility with up to \$250.0 million in availability. Effective December 14, 1999, PCA elected to reduce its availability under the revolving credit facility from \$250.0 million to \$150.0 million.

On January 28, 2000, PCA became a publicly-traded company with the initial public offering of its common stock. In the offering, Pactiv sold 35,000,000 shares and PCA sold 11,250,000 new shares of common stock, both at an offering price of \$12.00 per share. PCA used its net proceeds to redeem all of the outstanding senior exchangeable preferred stock on March 3, 2000.

PCA completed the refinancing of its \$735.0 million senior secured debt and \$150.0 million senior secured revolving credit facility on June 29, 2000. Completion of the refinancing eliminated a \$226.5 million term loan, and reduced PCA's average effective interest rate on its senior secured term debt by approximately 100 basis points. PCA's total borrowings under the senior credit facility as of December 31, 2002 consisted of \$79.0 million of term loans. No amounts were outstanding under the senior revolving credit facility as of that date.

On November 29, 2000, PCA established an on-balance sheet securitization program for its trade accounts receivable. To effectuate this program, PCA formed a wholly-owned limited purpose subsidiary, Packaging Credit Company, LLC, or PCC, which in turn formed a wholly-owned, bankruptcy-remote, special-purpose subsidiary, Packaging Receivables Company, LLC, or PRC, for the purpose of acquiring receivables from PCC. Both of these entities are included in the consolidated financial statements of PCA. Under this program, PCC purchases on an ongoing basis all of the receivables of PCA and sells such receivables to PRC. PRC and lenders established a \$150.0 million receivables-backed revolving credit facility through which PRC obtains funds to purchase receivables from PCC. The receivables purchased by PRC are and will be solely the property of PRC. In the event of a liquidation of PRC, the creditors of PRC would be entitled to satisfy their claims from PRC's assets prior to any distribution to PCC or PCA. Credit available under the receivables credit facility is on a borrowing-base formula. As a result, the full amount of the facility may not be available at all times. As of December 31, 2002, \$113.0 million was outstanding and \$37.0 million was available for additional borrowing under the receivables credit facility. The highest outstanding principal balance under the receivables credit facility during fiscal 2002 was \$126.0 million.

During 2001, Pactiv sold approximately 6,160,240 shares of PCA common stock, which represented its remaining ownership interest.

Industry Overview

According to the Fibre Box Association, the value of industry shipments of corrugated products was over \$22 billion in 2002.

The primary end-use markets for corrugated products are shown below:

| | |
|---|-------|
| Food, beverages and agricultural products | 43.0% |
| Paper products | 23.6% |
| Petroleum, plastic, synthetic and rubber products | 10.8% |
| Glass, pottery, fabricated metal and metal containers | 5.4% |
| Electrical and electronic machinery and appliances | 3.3% |
| Toys, amusement, sporting and athletic goods | 3.2% |
| Textile mill products and apparel | 2.2% |

Converting plants tend to be located in close proximity to customers to minimize freight costs. The corrugated products industry consists of approximately 675 companies in the United States.

Containerboard, which includes both linerboard and corrugating medium, is the principal raw material used to manufacture corrugated products. Linerboard is used as the inner and outer facings, or liners, of corrugated products. Corrugating medium is fluted and laminated to linerboard in corrugator plants to produce corrugated sheets. The sheets are subsequently printed, cut, folded and glued in corrugator plants or sheet plants to produce corrugated products.

Containerboard may be manufactured from both softwood and hardwood fibers, as well as from recycled fibers from used corrugated and waste from converting operations. Kraft linerboard is made predominantly from softwoods like pine. Semi-chemical corrugating medium is made from hardwoods such as oak. The finished paper product is wound into large rolls, which are slit to size as required by converters, and shipped to them.

Linerboard is made in a range of grades or basis weights. The most commonly used basis weight of linerboard is 35 lb., although linerboard is produced in weights that vary from under 26 lb. to over 90 lb. Basis weight represents the weight in pounds per thousand square feet of linerboard. Producers also market linerboard by performance characteristics, appearance and color. The following table describes different product weight, performance and color characteristics:

| <u>Category</u> | <u>Products</u> | <u>Description</u> |
|-----------------------------------|-----------------|---|
| Weights (lb./1,000 sq. ft.) . . . | 26-38 lb. | Lightweights |
| | 41-56 | Middleweights |
| | 61-90 | Heavyweights |
| | >90 | Super heavyweights |
| Performance | High ring crush | Stacking or compression strength |
| | Tare weight | Minimal variations in basis weight |
| | Wet strength | Strength while wet |
| Color | Mottled white | Bleached pulp applied to unbleached sheet; mottled appearance |
| | White top | Even, white surface appearance on top sheet |
| | Full bleached | Solid white throughout |

Historically, pricing for containerboard has reflected changes in containerboard supply as well as changes in demand.

PCA Operations and Products

Our two linerboard mills can manufacture a broad range of linerboard grades ranging from 26 lb. to 96 lb. Our two semi-chemical corrugating medium mills can manufacture grades ranging in weight from 21 lb. to 47 lb. All four of our mills have completed an extensive independent review process to become ISO 9002 certified. ISO 9002 is an international quality certification that verifies a facility maintains and follows stringent procedures for manufacturing, sales and customer service.

Counce. Our Counce, Tennessee mill is one of the largest linerboard mills in the United States. Its production capacity is approximately 980,000 tons per year. In 2002, we produced approximately 966,000 tons of kraft linerboard on two paper machines at Counce. We produced a broad range of basis weights from 31 lb. to 90 lb. The mill also produces a variety of performance and specialty grades of linerboard including high-ring crush and wet strength.

Valdosta. Our Valdosta, Georgia mill is a kraft linerboard mill that has a production capacity of approximately 406,000 tons per year. In 2002, our single paper machine at Valdosta produced approximately 425,000 tons of kraft linerboard. Linerboard production for 2002 exceeded the stated capacity of the mill due to an unusually high percentage of middleweight production. Valdosta produces light to middleweight linerboard ranging from 35 lb. to 56 lb., and heavyweight/super heavyweight linerboard ranging from 61 lb. to 90 lb.

Tomahawk. Our Tomahawk, Wisconsin mill is the second largest corrugating medium mill in the United States with production capacity of 547,000 tons per year. In 2002, we produced approximately 533,000 tons of semi-chemical corrugating medium on three paper machines, one of which is among the largest corrugating medium machines in the world. These machines produce a broad range of basis weights from 23 lb. to 40 lb. Our Tomahawk mill also produces a variety of performance and specialty grades of corrugating medium. This includes high ring crush, wet strength, tare weight and super heavyweight.

Filer City. Our Filer City, Michigan mill is a semi-chemical corrugating medium mill currently operating with two machines with a production capacity of 292,000 tons. In 2002, we produced approximately 281,000 tons of corrugating medium. In July 1998, we shut down one machine at Filer City. Mill production capacity at Filer City is 362,000 tons a year if we run all three paper machines. Filer City produces a range of corrugating medium grades in basis weights from 23 lb. to 40 lb.

We operate 64 corrugated manufacturing operations, a technical and development center, five regional graphic design centers, a rotogravure printing operation and a complement of packaging supplies and distribution centers. Of the 64 manufacturing facilities, 39 operate as combining operations that manufacture corrugated sheets and finished corrugated containers. The remaining 25 manufacturing facilities purchase combined sheets and manufacture finished corrugated containers. The five graphic design centers are located in Cincinnati, Ohio; Dallas, Texas; Cranbury, New Jersey; Salisbury, North Carolina and South Gate, California.

Our corrugated manufacturing operations are spread throughout the United States. Each corrugator plant serves a market radius that typically averages 150 miles. Our sheet plants are generally located in close proximity to our larger corrugator plants which enables us to offer additional services and converting capabilities such as small volume and quick turnaround items.

We produce a wide variety of products ranging from basic corrugated shipping containers to specialized packaging such as wax-coated boxes for the agriculture industry. We also have multi-color printing capabilities to make high-impact graphics boxes and displays that offer customers more attractive packaging.

Timberland

We currently lease the cutting rights to approximately 140,000 acres of timberland located near our Counce and Valdosta mills. Virtually all of the acres under cutting rights agreements are located within 100 miles of our mills, which results in lower wood transportation costs and provides a secure source of wood fiber. Most of these leased cutting rights agreements have terms with over 15 years remaining.

During 1999 and 2000, PCA sold about 800,000 acres of timberland. As part of the timberland sale agreements, we entered into supply arrangements covering about 600,000 acres of the total acres sold. We also retained a one-third equity ownership interest in 385,000 acres sold to Southern Timber Venture, LLC in November 2000.

In addition to the timberland we manage ourselves, our Forest Management Assistance Program provides professional forestry assistance to private timberland owners to improve harvest yields and to optimize their harvest schedule. We have managed the regeneration of approximately 120,000 acres by supplying pine seedlings. In exchange for our expertise, we are given the right of first refusal over timber

sales from those lands. These private lands include over 210,000 acres of timberland. We expect to harvest approximately 85,000 cords of wood from these forests annually.

PCA also participates in the Sustainable Forestry Initiative, which is organized by the American Forest and Paper Association. This initiative is aimed at ensuring the long-term health and conservation of America's forestry resources. Activities include limiting tree harvest sizes, replanting harvest acreage, participating in flora and fauna research and protecting water streams.

Solid Wood and Recycling Facilities

We own three sawmills located in Ackerman and Fulton, Mississippi and Selmer, Tennessee. During 2002, these three sawmills sold approximately 115 million board feet of lumber used to make furniture and building products. We also have an air-dry yard operation in Burnsville, Mississippi that holds newly cut lumber while it dries.

We also operate two paper recycling centers, one in Jackson, Tennessee and one in Nashville, Tennessee. These recycling centers collect old corrugated containers, newspapers and other paper that provide a source of recycled fiber to our nearby Counce mill.

Sales and Marketing

Our corrugated products are sold through a direct sales and marketing organization. Sales representatives and a sales manager at each converting operations facility serve local and regional accounts. Corporate account managers serve large national accounts at multiple customer locations. Additionally, our graphic design centers maintain an on-site dedicated graphics sales force. General marketing support is located at our corporate headquarters.

Our containerboard sales group is responsible for the sale of linerboard and corrugating medium to our corrugator plants, to other domestic customers and to the export market. This group handles order processing for all shipments of containerboard from our mills to our corrugator plants. These personnel also coordinate and execute all containerboard trade agreements with other containerboard manufacturers.

In addition to direct sales and marketing personnel, we utilize support personnel that are new product development engineers and product graphics and design specialists. These individuals are located at both the corrugator plants as well as the graphic design centers.

Distribution

Our corrugated products are usually delivered by truck due to our large number of customers and their demand for timely service. Shipping costs represent a relatively high percentage of our total costs due to the high bulk of corrugated products. As a result, our converting operations typically service customers within a 150 miles radius.

Containerboard produced in our mills is shipped by rail or truck. Our individual mills do not own or maintain outside warehousing facilities. We do use some third-party warehouses for short-term storage.

Customers

PCA's corrugated products group sells to over 8,300 customers in over 14,600 locations. About 70% of our corrugated products customers are regional and local accounts, which are broadly diversified across industries and geographic locations. The remaining 30% of our customer base consists primarily of national accounts, or those customers with a national presence. These customers typically purchase corrugated products from several of our box plants throughout the United States.

In 2002, our corrugated products plants consumed approximately 1,752,000 tons, or 80% of our mills' containerboard production. Of the remaining 20% of our containerboard mill production that we did not consume at our own converting operations, about 12% of the tons was sold to domestic customers, and about 8% of the tons was sold to export customers.

Major Raw Materials Used

Fiber supply. Fiber is the single largest cost in the manufacture of containerboard. PCA consumes both wood fiber and recycled fiber in our containerboard mills. We have no 100% recycled mills, or those mills whose fiber consumption consists solely of recycled fiber. To reduce our fiber costs, we have invested in processes and equipment to ensure a high degree of fiber flexibility. Our mills have the capability to shift a portion of their fiber consumption between softwood, hardwood and recycled sources. With the exception of our Valdosta mill, our other mills can utilize some recycled fiber in their containerboard production. Our ability to use various types of virgin and recycled fiber helps mitigate the impact of changes in the prices of various fibers. Our corrugated products plants generate recycled fiber as a by-product from the manufacturing process, which is sold to our mills directly or through trade agreements. During 2002, our containerboard mills consumed approximately 554,000 tons of recycled fiber, of which about 198,000 tons was generated from our own box plants, resulting in net recycled consumption of 356,000 tons, or 16% of our total fiber requirements.

Energy supply. Energy at the mills is obtained through purchased electricity or through various fuels, which are converted to steam or electricity on-site. Fuel sources include coal, natural gas, oil, internally produced and purchased bark and by-products of the containerboard manufacturing and pulping process. These fuels are burned in boilers to produce steam. Steam turbine generators are used to produce electricity. To reduce our mill energy cost, we have invested in processes and equipment to ensure a high level of purchased fuel flexibility. Historically, natural gas and fuel oil have shown more price volatility than coal and purchased bark. During 2002, 11.8 million M² BTU's (million BTU's), or approximately 70% of our mills purchased fuel needs, were from purchased bark and coal, historically our two lowest cost fuels. For the same period, our mills consumed about 3.0 million M² BTU's of natural gas and 1.9 million M² BTU's of fuel oil.

Our two, kraft linerboard mills at Counce and Valdosta generate approximately 65% to 70% of their fuel requirements from their own by-products. Approximately 45% to 50% of the electricity consumed by our four mills is generated on-site.

PCA's corrugated products combining plants each have a boiler that produces steam which is used by the corrugator. The majority of these boilers burn natural gas, although some also have the ability to burn fuel oil. During 2002, PCA's corrugated products plants consumed approximately 2.1 million M² BTU's of natural gas.

Competition

Corrugated products are produced by about 675 U.S. companies operating approximately 1,425 plants. Most corrugated products are custom manufactured to the customer's specifications. Corrugated producers generally sell within a 150-mile radius of their plants and compete with other corrugated producers in their local market. In fact, the Fibre Box Association tracks industry data by 47 distinct market regions.

The larger, multi-plant integrated companies may also solicit larger, multi-plant customers who purchase for all of their facilities on a consolidated basis. These customers are often referred to as national or corporate accounts.

Corrugated products businesses seek to differentiate themselves through pricing, quality, service, design and product innovation. We compete for both local and national account business and we compete

against producers of other types of packaging products. On a national level, our competitors include Georgia-Pacific Corporation, International Paper Company, Smurfit-Stone Container Corporation, Temple-Inland Inc. and Weyerhaeuser Company. However, with our strategic focus on local and regional accounts, we believe we compete as much with the smaller, independent converters as with the larger, integrated producers.

Our principal competitors with respect to our containerboard produced but not consumed at our own corrugated products plants are a number of large, diversified paper companies, including Georgia-Pacific Corporation, International Paper Company, Smurfit-Stone Container Corporation, Temple-Inland Inc. and Weyerhaeuser Company, as well as other regional manufacturers. Containerboard is generally considered a commodity-type product and can be purchased from numerous suppliers.

Employees

As of December 31, 2002, we had approximately 7,900 employees. Approximately 2,200 of these employees were salaried and approximately 5,700 were hourly. Approximately 75% of our hourly employees are represented by unions. Our unionized employees are represented primarily by the Paper, Allied Industrial, Chemical, Energy Workers International Union, the International Association of Machinists, the Graphic Communications International Union and the United Steel Workers of America (USWA).

The contract for our unionized mill employees at our Valdosta, Georgia kraft linerboard mill expires in September 2003. Contracts for unionized mill employees at our three remaining containerboard mills expire between October 2005 and June 2007. Contracts for unionized converting plant employees expire between February 2003 and November 2008. We are currently in negotiations to renew or extend any union contracts that have recently expired or are expiring in the near future.

During 2002 we experienced no work stoppages. In 2001, we experienced a one-month strike at our Filer City mill with the USWA. The strike was settled, and the mill's current agreement expires in May 2006. Prior to this incident we had experienced no instances of significant work stoppages in the previous 15 years. We believe we have satisfactory relations with our employees.

Environmental Matters

Compliance with environmental requirements is a significant factor in our business operations. We commit substantial resources to maintaining environmental compliance and managing environmental risk. We are subject to, and must comply with, a variety of federal, state and local environmental laws, particularly those relating to air and water quality, waste disposal and the cleanup of contaminated soil and groundwater. We believe that we are currently in material compliance with all applicable environmental rules and regulations. Because environmental regulations are constantly evolving, we have incurred, and will continue to incur, costs to maintain compliance with those laws. We work diligently to anticipate and budget for the impact of applicable environmental regulations and do not currently expect that future environmental compliance obligations will materially affect our business or financial condition.

In April 1998, the United States Environmental Protection Agency (EPA) finalized a new Clean Air and Water Act commonly referred to as the Cluster Rules, which govern all pulp and paper mill operations, including those at our mills. Over the next several years, the Cluster Rules will affect our allowable discharges of air and water pollutants. As a result, PCA and its competitors are required to incur costs to ensure compliance with these new rules. From 1997 through 2002, we spent approximately \$30.3 million on Cluster Rule compliance to meet Clean Air Act requirements. Total capital costs for environmental matters, including Cluster Rule compliance, were \$4.3 million for 2002. We currently estimate 2003 environmental capital expenditures will be \$14.7 million, of which \$4.4 million of the

expenditures are to meet Cluster Rule requirements. Our current spending projections to complete all Cluster Rule compliance requirements at our four mills is about \$14.4 million from 2003 to 2005.

As is the case with any industrial operation, we have in the past incurred costs associated with the remediation of soil or groundwater contamination. From 1994 through 2002, remediation costs at our mills and converting plants totaled about \$2.9 million. We do not believe that any on-going remedial projects are material in nature. As of December 31, 2002, we maintained an environmental reserve of \$3.7 million, which includes funds relating to onsite landfill and surface impoundments as well as on-going and anticipated remedial projects. We believe these reserves are adequate.

We could also incur environmental liabilities as a result of claims by third parties for civil damages, including liability for personal injury or property damage, arising from releases of hazardous substances or contamination. We are not aware of any material claims of this type currently pending against us.

As a part of the April 12, 1999 transactions, Pactiv agreed to retain all liability for all former facilities and all sites associated with pre-closing offsite waste disposal. Pactiv also retained environmental liability for a closed landfill located near the Filer City mill.

Forward-looking Statements

Some of the statements in this report and in our 2002 Annual Report to Shareholders, and in particular, statements found in Management's Discussion and Analysis of Financial Condition and Results of Operations, that are not historical in nature may constitute forward-looking statements. These statements are often identified by the words "will," "should," "anticipate," "believe," "expect," "intend," "estimate," "hope," or similar expressions. These statements reflect management's current views with respect to future events and are subject to risks and uncertainties. There are important factors that could cause actual results to differ materially from those in forward-looking statements, many of which are beyond our control. These factors, risks and uncertainties include the following:

- the impact of general economic conditions;
- containerboard and corrugated products general industry conditions, including competition, product demand and product pricing;
- fluctuations in wood fiber and recycled fiber costs;
- fluctuations in purchased energy costs;
- legislative or regulatory requirements, particularly concerning environmental matters.

Our actual results, performance or achievement could differ materially from those expressed in, or implied by, these forward-looking statements, and accordingly, we can give no assurances that any of the events anticipated by the forward-looking statements will transpire or occur, or if any of them do so, what impact they will have on our results of operations or financial condition. In view of these uncertainties, investors are cautioned not to place undue reliance on these forward-looking statements. We expressly disclaim any obligation to publicly revise any forward-looking statements that have been made to reflect the occurrence of events after the date hereof. For a discussion of other factors that may affect our business, see the "Risk Factors" exhibit included with this report.

Available Information

The Company's internet website address is www.packagingcorp.com. Our annual reports on Form 10-K, quarterly reports on Form 10-Q, current reports on Form 8-K, and amendments to those reports filed or furnished pursuant to section 13(a) or 15(d) of the Exchange Act are available free of charge through our website as soon as reasonably practicable after they are electronically filed with, or furnished to, the Securities and Exchange Commission.

Item 2. PROPERTIES

The table below provides a summary of our containerboard mills, the principal products produced and each mill's annual capacity.

| <u>Location</u> | <u>Function</u> | <u>Capacity (tons)</u> |
|----------------------|---------------------------|------------------------|
| Counce, TN | Kraft linerboard mill | 980,000 |
| Valdosta, GA | Kraft linerboard mill | 406,000 |
| Tomahawk, WI | Semi-chemical medium mill | 547,000 |
| Filer City, MI | Semi-chemical medium mill | 362,000* |
| Total | | <u>2,295,000</u> |

* We have operated only two of our three paper machines at Filer City since July 1998, reducing the total productive capacity by 70,000 tons to 292,000 tons, and to 2,225,000 tons for our total mill containerboard system.

Each of the mills is currently subject to a mortgage held by Morgan Guaranty Trust Company of New York on behalf of the lenders under the senior credit facility.

In addition to our mills, we own 42 corrugated products plants. We also own three sawmills, an air-drying yard, one recycling facility, one warehouse and miscellaneous other property, which includes sales offices and woodlands forest management offices. These sales offices and woodlands forest management offices generally have one to four employees and serve as administrative offices. We lease 22 corrugated products plants, five regional design centers, one recycling facility and numerous other distribution centers, warehouses and facilities. PCA has one leased property, a warehouse and assembly center, outside of the continental United States in Nogales, Mexico. All of our owned real property is subject to a first priority mortgage held by Morgan Guaranty Trust Company of New York on behalf of the lenders under the senior credit facility.

We lease the cutting rights to approximately 140,000 acres of timberland located near our Counce and Valdosta mills. Most of these cutting rights agreements have terms with over 15 years remaining.

We currently lease our executive and administrative offices in Lake Forest, Illinois under a lease expiring in January 2005. We currently believe that our facilities and properties are sufficient to meet our operating requirements for the foreseeable future.

Item 3. LEGAL PROCEEDINGS

On May 14, 1999, PCA was named as a defendant in a Consolidated Class Action Complaint which alleged a civil violation of Section 1 of the Sherman Act. The suit, captioned *Winoff Industries, Inc. v. Stone Container Corporation*, MDL No. 1261 (E.D. Pa.), names us as a defendant based solely on the allegation that PCA is successor to the interests of Tenneco Packaging Inc. and Tenneco Inc., both of which were also named as defendants in the suit, along with nine other linerboard manufacturers. The complaint alleges that the defendants, during the period October 1, 1993 through November 30, 1995, conspired to limit the supply of linerboard, and that the purpose and effect of the alleged conspiracy was artificially to increase prices of corrugated containers. The plaintiffs have moved to certify a class of all persons in the United States who purchased corrugated containers directly from any defendant during the above period, and seek treble damages and attorneys' fees on behalf of the purported class. The Court granted plaintiffs' motion on September 4, 2001, but modified the proposed class to exclude those purchasers who purchased corrugated containers pursuant to contracts in which the price was "not tied to the price of linerboard". The Court's class certification decision was affirmed by the Court of Appeals for the Third Circuit on September 5, 2002. The case is currently set for trial in April, 2004. We believe that the plaintiffs' allegations have no merit and intend to defend against the suit vigorously. We do not believe that the

outcome of this litigation should have a material adverse effect on our financial position, results of operations, or cash flow.

PCA is also party to various legal actions arising in the ordinary course of our business. These legal actions cover a broad variety of claims spanning our entire business. We believe that the resolution of these legal actions will not, individually or in the aggregate, have a material adverse effect on our financial condition or results of operations.

Item 4. SUBMISSION OF MATTERS TO A VOTE OF SECURITY HOLDERS

No matters were submitted to a vote of security holders in the fourth quarter of 2002.

PART II

Item 5. MARKET FOR REGISTRANT'S COMMON STOCK AND RELATED SHAREHOLDER MATTERS

Market for Common Stock; Dividends

PCA's common stock is listed on the New York Stock Exchange under the symbol "PKG". The following table sets forth the high and low sale prices as reported by the New York Stock Exchange during the last two years.

| | Fiscal Year 2002 | | | | |
|------------------------------|------------------|----------------|---------------|----------------|----------|
| | First Quarter | Second Quarter | Third Quarter | Fourth Quarter | Year |
| Stock sale prices per share: | | | | | |
| High | \$ 19.88 | \$ 21.10 | \$ 19.85 | \$ 18.60 | \$ 21.10 |
| Low | \$ 16.45 | \$ 18.81 | \$ 16.27 | \$ 16.20 | \$ 16.20 |

| | Fiscal Year 2001 | | | | |
|------------------------------|------------------|----------------|---------------|----------------|----------|
| | First Quarter | Second Quarter | Third Quarter | Fourth Quarter | Year |
| Stock sale prices per share: | | | | | |
| High | \$ 16.50 | \$ 16.98 | \$ 20.70 | \$ 18.64 | \$ 20.70 |
| Low | \$ 12.65 | \$ 12.85 | \$ 14.75 | \$ 14.23 | \$ 12.65 |

As of March 18, 2003, there were 52 holders of record of our common stock.

We have never paid dividends on our common stock, and we currently have no plans to do so. The payment of any future dividends will be determined by PCA's Board of Directors in light of conditions then existing, including our earnings, financial condition and capital requirements, restrictions in financing agreements, business conditions and other factors. Under the terms of the agreements governing our outstanding indebtedness, we are restricted in the amount of dividends we can pay on our common stock.

No equity securities of PCA were sold by PCA during fiscal year 2002 which were not registered under the Securities Act of 1933.

Stock Repurchase Program

On May 16, 2001, PCA announced a \$100.0 million common stock repurchase program. We currently expect to continue to repurchase shares from time to time. The following table sets forth our share repurchases during the last two years.

| <u>Time Period</u> | <u>Number of Shares</u> | <u>Average Price Per Share</u> | <u>Total Cost</u> <i>(In thousands)</i> |
|-----------------------------|-------------------------|--------------------------------|--|
| First Quarter | — | \$ — | \$ — |
| Second Quarter | 222,900 | 15.55 | 3,465 |
| Third Quarter | 1,589,800 | 16.75 | 26,634 |
| Fourth Quarter | 510,500 | 16.12 | 8,229 |
| Total 2001 | <u>2,323,200</u> | <u>\$16.50</u> | <u>\$38,328</u> |
| First Quarter | 385,100 | \$17.54 | \$ 6,754 |
| Second Quarter | 120,100 | 19.61 | 2,355 |
| Third Quarter | 1,078,700 | 17.37 | 18,735 |
| Fourth Quarter | 303,800 | 16.93 | 5,143 |
| Total 2002 | <u>1,887,700</u> | <u>\$17.47</u> | <u>\$32,987</u> |
| Total Program To Date | <u>4,210,900</u> | <u>\$16.94</u> | <u>\$71,315</u> |

Item 6. SELECTED FINANCIAL DATA

The following table sets forth the selected historical financial and other data of PCA and the containerboard and corrugated products business of Pactiv Corporation (the "Group"). The selected historical financial and other data as of and for the years ended December 31, 1998, and for the period from January 1, 1999 to April 11, 1999, was derived from the audited combined financial statements of the Group. The historical financial data as of December 31, 1999 and for the period from April 12, 1999 to December 31, 1999, and for the years ended December 31, 2000, 2001 and 2002 has been derived from the audited consolidated financial statements of PCA included elsewhere in this report. The information contained in the following table also should be read in conjunction with "Management's Discussion and Analysis of Financial Condition and Results of Operations," and the historical consolidated financial statements of PCA including the notes thereto, contained elsewhere in this report.

| | PCA(1) | | | April 12, 1999 Through Dec. 31, 1999 | Group | |
|--|---|--------------|--------------|--|---|-----------------------------|
| | For the Year Ended December 31, 2002 | 2001 | 2000 | | Jan. 1, 1999 Through April 11, 1999 | Year Ended Dec. 31, 1998 |
| <i>(In thousands, except per share data)</i> | | | | | | |
| Statement of Income Data: | | | | | | |
| Net sales | \$ 1,735,858 | \$ 1,789,956 | \$ 1,921,868 | \$ 1,317,342 | \$ 453,207 | \$ 1,643,823 |
| Income (loss) before cumulative effect of accounting change and extraordinary item | \$ 48,179 | \$ 107,522 | \$ 172,961 | \$ 47,397 | \$ (128,599) | \$ 71,439 |
| Cumulative effect of accounting change | — | (495) | — | — | — | — |
| Extraordinary item | — | (609) | (11,060) | (6,897) | (6,327) | — |
| Net income (loss) | 48,179 | 106,418 | 161,901 | 40,500 | (134,926) | 71,439 |
| Preferred dividends and accretion of preferred stock issuance costs | — | — | (18,637) | (9,296) | — | — |
| Net income (loss) available to common stockholders | \$ 48,179 | \$ 106,418 | \$ 143,264 | \$ 31,204 | \$ (134,926) | \$ 71,439 |
| Basic earnings per share(2): | | | | | | |
| Income (loss) before cumulative effect of accounting change and extraordinary item | \$.46 | \$ 1.01 | \$ 1.47 | \$.41 | \$ (1.36) | \$.76 |
| Cumulative effect of accounting change | — | — | — | — | — | — |
| Extraordinary item | — | (.01) | (.10) | (.07) | (.07) | — |
| Net income (loss) per common share | \$.46 | \$ 1.00 | \$ 1.37 | \$.34 | \$ (1.43) | \$.76 |
| Diluted earnings per share(2): | | | | | | |
| Income (loss) before cumulative effect of accounting change and extraordinary item | \$.45 | \$.99 | \$ 1.43 | \$.39 | \$ (1.36) | \$.76 |
| Cumulative effect of accounting change | — | — | — | — | — | — |
| Extraordinary item | — | (.01) | (.10) | (.07) | (.07) | — |
| Net income (loss) per common share | \$.45 | \$.98 | \$ 1.33 | \$.32 | \$ (1.43) | \$.76 |
| Weighted average common shares outstanding | 105,053 | 106,277 | 104,890 | 92,108 | 94,600 | 94,600 |
| Balance Sheet Data: | | | | | | |
| Total assets | \$ 1,982,551 | \$ 1,971,780 | \$ 1,942,112 | \$ 2,153,208 | \$ 2,391,089 | \$ 1,367,403 |
| Total long-term obligations(3) | 742,213 | 795,217 | 869,414 | 1,432,553 | 1,760,466 | 17,552 |
| Shareholders equity/interdivision account | 795,875 | 769,834 | 687,424 | 416,699 | 156,697 | 908,392 |

- 1) There was no activity for PCA from January 25, 1999, its date of inception, through April 11, 1999.
- 2) Earnings per share through April 11, 1999 has been calculated using the historical earnings of the Group and the number of common shares resulting from the closing of the acquisition on April 12, 1999 (94,600,000 common shares after giving effect to the 220-for-one stock split). For the PCA historical period from April 12, 1999 to December 31, 1999, earnings available to common stockholders includes a reduction for \$9,296 of preferred stock dividends. For the year ended December 31, 2000, earnings available to common stockholders includes reductions of \$2,371 of preferred stock dividends and \$16,266 for the redemption of PCA's 12 3/8% preferred stock. PCA did not declare any dividends on its common shares in 1999, 2000, 2001 or 2002.

For all periods presented through April 11, 1999, basic and diluted earnings per share are the same because there are no potentially dilutive securities. For the PCA historical period from April 12, 1999 to December 31, 1999 and for the years ended December 31, 2000, 2001 and 2002 diluted earnings per share includes the dilutive effect of outstanding options. This dilutive effect is calculated using the treasury stock method.

- 3) Total long-term obligations include long-term debt, the current maturities of long-term debt and redeemable preferred stock. The amount excludes amounts due to Pactiv or other Tenneco affiliates as part of the Group's interdivision account or other financing arrangement.

Item 7. MANAGEMENT'S DISCUSSION AND ANALYSIS OF FINANCIAL CONDITION AND RESULTS OF OPERATIONS

The following discussion of historical results of operations and financial condition should be read in conjunction with the audited financial statements and the notes thereto which appear elsewhere in this report.

Overview

In connection with the April 12, 1999 transactions, PCA acquired the containerboard and corrugated products business of Pactiv Corporation (the "Group"), formerly known as Tenneco Packaging Inc., a wholly owned subsidiary of Tenneco, Inc. The Group operated prior to April 12, 1999 as a division of Pactiv, and not as a separate, stand-alone entity. From its formation in January 1999 and through the closing of the acquisition on April 12, 1999, PCA did not have any significant operations.

The April 12, 1999 acquisition was accounted for using historical values for the contributed assets. Purchase accounting was not applied because, under the applicable accounting guidance, a change of control was deemed not to have occurred as a result of the participating veto rights held by Pactiv after the closing of the transactions under the terms of the stockholders agreement entered into in connection with the transactions.

General

Containerboard demand is dependent upon both domestic demand for corrugated products and linerboard export activity.

According to Pulp & Paper Week, after giving effect to price changes in 2002, average mid-point prices in December 2002 for linerboard and corrugating medium, East, were 4% higher than December 2001 prices.

Pulp & Paper Week, in its February 17, 2003 publication, reported that average prices for linerboard and corrugating medium decreased \$10 per ton, or 2%, and \$15 per ton, or 4%, respectively, compared to December 2002 levels. The March 17, 2003 Pulp & Paper Week publication reported that prices remained unchanged from February 2003 levels.

Results of Operations

The historical results of operations of PCA are set forth below:

| (In millions) | For the Year Ended December 31, | | |
|--|---------------------------------|-----------|-----------|
| | 2002 | 2001 | 2000 |
| Net Sales..... | \$1,735.9 | \$1,790.0 | \$1,921.9 |
| Operating Income..... | \$ 145.3 | \$ 249.5 | \$ 404.8 |
| Interest Expense..... | (67.7) | (74.1) | (117.6) |
| Income Before Taxes, Cumulative Effect of Accounting Change and Extraordinary Item... | 77.6 | 175.4 | 287.2 |
| Provision for Income Taxes..... | (29.4) | (67.9) | (114.2) |
| Income Before Cumulative Effect of Accounting Change and Extraordinary Item..... | 48.2 | 107.5 | 173.0 |
| Cumulative Effect of Accounting Change..... | — | (0.5) | — |
| Extraordinary Item..... | — | (0.6) | (11.1) |
| Net Income..... | 48.2 | 106.4 | 161.9 |
| Preferred Dividends and Accretion of Preferred Stock Issuance Costs..... | — | — | (18.6) |
| Net Income Available to Common Shareholders . | \$ 48.2 | \$ 106.4 | \$ 143.3 |

Year Ended December 31, 2002 Compared to Year Ended December 31, 2001

Net Sales

Net sales decreased by \$54.1 million, or 3.0%, for the year ended December 31, 2002 from the year ended December 31, 2001. The decrease was primarily the result of decreased sales prices of corrugated products and containerboard, partially offset by increased corrugated products volume and slightly higher volume of containerboard sold to third parties.

Total corrugated products volume increased 3.5% to 27.5 billion square feet in 2002 compared to 26.5 billion square feet in 2001. On a comparable shipment-per-workday basis, corrugated products volume increased 3.9% in 2002 from 2001. The larger percentage increase was due to the fact that 2001 had one more workday, those days not falling on a weekend or holiday, than 2002. Containerboard volume to external domestic and export customers increased 11.4% to 477,000 tons for the year ended December 31, 2002 from 428,000 tons in the comparable period of 2001. Our total containerboard mill production in 2002 was 2,204,000 tons compared to 2,125,000 tons in 2001.

According to Pulp & Paper Week, average industry mid-point linerboard and semi-chemical medium prices for 42 lb. Liner-East and 26 lb. Medium-East, which are representative benchmark grades, were \$426 and \$383, respectively, per ton in 2002. This compares to \$444 and \$404, respectively, per ton in 2001. With respect to box prices, PCA realized an additional \$9 per ton increase in October after implementing \$10 per ton increases in both August and September.

In November 2002, Pulp & Paper Week reported that average linerboard prices for 42 lb. Liner-East decreased \$5 per ton to \$435 per ton. The same publication reported that prices for 26 lb. Medium-East, semi-chemical medium remained unchanged for the month at \$395 per ton. Pulp & Paper Week reported no changes in linerboard or medium prices in December.

Income Before Interest Expense and Income Taxes (Operating Income)

Operating income decreased by \$104.2 million, or 41.8%, for the year ended December 31, 2002 compared to 2001. The decrease was primarily the result of decreased sales prices, which reduced operating income by \$97.8 million, plus increased costs for recycled fiber at our containerboard mills,

higher medical costs and increased depreciation expense. These items were only partially offset by increased corrugated products and containerboard volume.

PCA did not record any material benefit related to changes in accounting treatment of goodwill in 2002. Goodwill amortization was not material for the years ended December 31, 2000 and 2001.

Gross profit decreased \$91.4 million, or 21.9%, for the year ended December 31, 2002 from the year ended December 31, 2001. Gross profit as a percentage of sales declined from 23.3% of sales in 2001 to 18.8% of sales in the current year primarily due to the sales price decreases described above.

Corporate overhead for the year ended December 31, 2002, increased by \$0.4 million, or 1.1%, from the year ended December 31, 2001.

Selling and administrative expenses increased \$8.6 million, or 6.9%, for the year ended December 31, 2002 from the comparable period in 2001. The increase was primarily the result of increased salary, medical and other general selling related expenses.

Interest Expense and Income Taxes

Interest expense decreased by \$6.4 million, or 8.6%, for the year ended December 31, 2002 from the comparable period in 2001, primarily due to prepayments PCA made in 2001 and 2002 on the term loans under its senior credit facility and the receivables credit facility.

PCA's effective tax rate was 37.9% for the year ended December 31, 2002 and 38.7% for the year ended December 31, 2001. The tax rate is higher than the federal statutory rate of 35.0% due to state income taxes.

Year Ended December 31, 2001 Compared to Year Ended December 31, 2000

Net Sales

Net sales decreased by \$131.9 million, or 6.9%, for the year ended December 31, 2001 from the year ended December 31, 2000. The decrease was primarily the result of decreased sales prices, reduced volume of containerboard sold to third parties, and slightly lower corrugated products volume.

Total corrugated products volume decreased 1.1% to 26.5 billion square feet in 2001 compared to 26.9 billion square feet in 2000. On a comparable shipment-per-workday basis, corrugated products volume decreased 1.5% in 2001 from 2000. The larger percentage decrease was due to the fact that 2001 had one more workday, those days not falling on a weekend or holiday, than 2000. Containerboard volume to external domestic and export customers decreased 16.0% to 428,000 tons for the year ended December 31, 2001 from 509,000 tons in the comparable period of 2000. Our total containerboard mill production in 2001 was 2,125,000 tons compared to 2,165,000 tons in 2000.

According to Pulp & Paper Week, average industry mid-point linerboard and semi-chemical medium prices for 42 lb. Liner-East and 26 lb. Medium-East, which are representative benchmark grades, were \$444 and \$404, respectively, per ton in 2001. This compares to \$468 and \$446, respectively, per ton in 2000.

Income Before Interest Expense and Income Taxes (Operating Income)

Operating income decreased by \$95.0 million, or 27.6%, for the year ended December 31, 2001 compared to 2000. The decrease was the result of decreased sales prices which reduced operating income by \$63.4 million in addition to lower volume of containerboard sold to third parties, and slightly lower corrugated products volume. Operating income for 2000 excludes a fourth quarter gain on timberland sales of \$60.4 million.

Gross profit decreased \$85.5 million, or 17.0%, for the year ended December 31, 2001 from the year ended December 31, 2000. Gross profit as a percentage of sales declined from 26.2% of sales in 2000 to 23.3% of sales in 2001 primarily due to the sales price decreases described above.

Corporate overhead for the year ended December 31, 2001, increased by \$0.1 million, or 0.2%, from the year ended December 31, 2000.

Selling and administrative expenses increased \$5.5 million, or 4.7%, for the year ended December 31, 2001 from the comparable period in 2000. The increase was primarily the result of increased salary and other general selling related expenses.

Interest Expense and Income Taxes

Interest expense decreased by \$43.7 million, or 37.1%, for the year ended December 31, 2001 from the comparable period in 2000, primarily due to prepayments PCA made on its term loans under the senior credit facility.

PCA's effective tax rate was 38.7% for the year ended December 31, 2001 and 39.8% for the year ended December 31, 2000. The tax rate is higher than the federal statutory rate of 35.0% due to state income taxes.

Liquidity and Capital Resources

Operating Activities

Cash flow provided by operating activities decreased \$74.3 million, or 23.6%, to \$240.0 million, for the year ended December 31, 2002 compared to the year ended December 31, 2001. The decrease was primarily due to lower net income as a result of decreased sales prices of containerboard and corrugated products, as well as decreased deferred income taxes and unfavorable changes in working capital. The unfavorable changes in working capital were primarily driven by higher balances of accounts receivable related to the strong sales volumes previously described, partially offset by lower inventory levels and a smaller reduction of the accounts payable balance than in 2001.

Cash flow provided by operating activities decreased \$26.7 million, or 7.8%, to \$314.3 million, for the year ended December 31, 2001 from the comparable period in 2000. The decrease was primarily due to lower net income and decreased deferred taxes partially offset by a favorable change in working capital, caused by lower balances of accounts receivable due to lower sales prices and volumes described previously.

Investing Activities

Cash used for investing activities decreased by \$25.3 million, or 18.7%, to \$109.6 million, for the year ended December 31, 2002 compared to the year ended December 31, 2001. The change was primarily the result of decreased additions to property, plant and equipment and one business acquisition in the second quarter of 2001.

Cash used for investing activities increased by \$251.8 million, or 215.3%, to \$134.9 million, for the year ended December 31, 2001 compared to the year ended December 31, 2000. The change was primarily attributable to a reduction in proceeds from timberland sales of \$247.9 million.

As of December 31, 2002, PCA had commitments for capital expenditures of \$31.3 million. PCA believes operating cash flow from continuing operations will be sufficient to fund these commitments.

Financing Activities

Cash used for financing activities decreased by \$23.3 million, or 22.2%, to \$81.6 million, for the year ended December 31, 2002 compared to the year ended December 31, 2001, primarily attributable to decreased prepayments made by PCA on its various debt agreements and a decrease in expenditures to repurchase PCA common stock.

Cash used for financing activities decreased by \$355.5 million, or 77.2%, for the year ended December 31, 2001 compared to the year ended December 31, 2000, primarily reflecting decreased prepayments made by PCA on its various debt agreements.

On January 28, 2000, PCA became a publicly traded company with an initial public offering of its common stock. On March 3, 2000, PCA used the net proceeds from the offering to redeem all of its outstanding shares of 12³/₈% senior exchangeable preferred stock due 2010.

On November 16, 2000, PCA completed the sale of approximately 385,000 acres of timberland to Southern Timber Venture, LLC. PCA received \$247.9 million in cash and a 33¹/₃% equity ownership interest in Southern Timber Venture, LLC. PCA recorded a pre-tax gain of \$60.4 million, and a portion of the gain was not recognized as a result of PCA's continuing ownership interest. In March 2002 PCA received a \$2.3 million dividend (\$1.4 million, after-tax) from Southern Timber Venture, LLC.

On November 29, 2000, PCA established an on-balance sheet securitization program for its trade accounts receivable. To effectuate this program, PCA formed a wholly-owned limited purpose subsidiary, Packaging Credit Company, LLC, or PCC, which in turn formed a wholly-owned, bankruptcy-remote, special-purpose subsidiary, Packaging Receivables Company, LLC, or PRC, for the purpose of acquiring receivables from PCC. Both of these entities are included in the consolidated financial statements of PCA. Under this program, PCC purchases on an ongoing basis substantially all of the receivables of PCA and sells such receivables to PRC. PRC and lenders established a \$150.0 million receivables-backed revolving credit facility through which PRC obtains funds to purchase receivables from PCC. The receivables purchased by PRC are and will be solely the property of PRC. In the event of a liquidation of PRC, the creditors of PRC would be entitled to satisfy their claims from PRC's assets prior to any distribution to PCC or PCA. Credit available under the receivables credit facility is on a borrowing-base formula. As a result, the full amount of the facility may not be available at all times. As of December 31, 2002, \$113.0 million was outstanding and \$37.0 million was available for additional borrowing under the receivables credit facility. The highest outstanding principal balance under the receivables credit facility during fiscal 2002 was \$126.0 million.

Contractual Obligations

The following table summarizes PCA's contractual obligations at December 31, 2002:

| (In thousands) | Payments Due by Period | | | | |
|--|------------------------|---------------------|------------------|------------------|----------------------|
| | Total | Less than 1 Year | 1-3 Years | 3-5 Years | More than 5 Years |
| Term loans | \$ 79,000 | \$ — | \$ 45,734 | \$ 33,266 | \$ — |
| Receivables credit facility | 113,000 | 113,000 | — | — | — |
| Senior subordinated notes, 9 ⁵ / ₈ %, callable beginning April 1, 2004 at 104.8125% | 550,000 | — | — | — | 550,000 |
| Other long-term debt | 213 | 94 | 119 | — | — |
| Total short-term and long-term debt | 742,213 | 113,094 | 45,853 | 33,266 | 550,000 |
| Operating leases | 94,409 | 19,589 | 31,207 | 12,051 | 31,562 |
| Purchase commitments | 19,715 | 15,639 | 4,076 | — | — |
| Letters of credit | 16,600 | 14,535 | 2,065 | — | — |
| Total | <u>\$872,937</u> | <u>\$162,857</u> | <u>\$ 83,201</u> | <u>\$ 45,317</u> | <u>\$581,562</u> |

The lease commitments, purchase commitments and letters of credit are not reflected on PCA's consolidated balance sheet as of December 31, 2002. See Notes 6 and 10 to the audited consolidated financial statements for additional information.

PCA's primary sources of liquidity are cash flows from operations and borrowings under PCA's senior revolving credit facility and receivables credit facility. As of December 31, 2002, PCA had \$187.0 million in unused borrowing capacity under its existing credit agreements. PCA's primary uses of cash are for debt service and capital expenditures. PCA expects to be able to fund its debt service and capital expenditures from these sources.

The following table provides the outstanding balance and the weighted average interest rate as of December 31, 2002 for each of PCA's outstanding term loans, the revolving credit facility and the receivables credit facility:

| <u>Borrowing Arrangement (in thousands)</u> | <u>Balance at December 31, 2002</u> | <u>Weighted Average Interest Rate</u> |
|---|---|---|
| Term Loan A | \$ 54,618 | 6.70%(a) |
| Term Loan B | 24,382 | 6.95%(a) |
| Senior Revolving Credit Facility: | | |
| Revolver—Eurodollar | — | N/A |
| Revolver—Base Rate | — | N/A |
| Receivables Credit Facility | 113,000 | 1.78% |
| Total | <u>\$192,000</u> | <u>3.84%</u> |

(a) The term loan interest rates reflect the floor of the interest rate collar agreement that expires in June of 2003 plus the applicable spread. The floor of this agreement was 4.95% at December 31, 2002.

In addition to the term loans and other borrowing arrangements noted above, PCA has \$550.0 million of 9 5/8% senior subordinated notes callable beginning April 1, 2004 at 104.8125% and due 2009.

The borrowings under the senior revolving credit facility are available to fund PCA's working capital requirements, capital expenditures and other general corporate purposes. The Term Loan A must be repaid in quarterly installments from September 2004 through 2006. The Term Loan B must be repaid in quarterly installments from March 2005 through 2007. The senior revolving credit facility will terminate in 2006. The receivables credit facility will terminate on November 29, 2003.

Since April 12, 1999, PCA has made prepayments totaling approximately \$1,027.0 million using cash flow from operations of \$516.0 million and proceeds from the sales of timberland of \$511.0 million to permanently reduce its borrowings under the term loans and variable rate debt.

The instruments governing PCA's indebtedness contain financial and other covenants that restrict, among other things, the ability of PCA and its subsidiaries to:

- incur additional indebtedness,
- pay dividends or make certain other restricted payments,
- consummate certain asset sales,
- incur liens,
- enter into certain transactions with affiliates, or
- merge or consolidate with any other person or sell or otherwise dispose of all or substantially all of the assets of PCA.

These limitations could limit corporate and operating activities.

In addition, we must maintain minimum debt service, minimum net worth and maximum leverage ratios under the senior credit facility. A failure to comply with the restrictions contained in the senior credit facility could lead to an event of default, which could result in an acceleration of such indebtedness. Such an acceleration would also constitute an event of default under the notes indenture and the receivables credit facility.

PCA estimates that it will make approximately \$115.0 million in capital expenditures in 2003. These expenditures will be used primarily for maintenance capital, cost reduction, business growth, and environmental compliance.

PCA believes that cash generated from operations will be adequate to meet its anticipated debt service requirements, capital expenditures and working capital needs for the next 12 months, and that cash generated from operations and amounts available under the senior revolving credit facility will be adequate to meet its anticipated debt service requirements, capital expenditures and working capital needs for the foreseeable future. PCA's future operating performance and its ability to service or refinance the notes and to service, extend or refinance the credit facilities will be subject to future economic conditions and to financial, business and other factors, many of which are beyond PCA's control.

Environmental Matters

We are subject to, and must comply with, a variety of federal, state and local environmental laws, particularly those relating to air and water quality, waste disposal and the cleanup of contaminated soil and groundwater. Because environmental regulations are constantly evolving, we have incurred, and will continue to incur, costs to maintain compliance with those laws. In particular, the EPA finalized the Cluster Rules which govern pulp and paper mill operations, including those at the Counce, Filer City, Valdosta and Tomahawk mills. Over the next several years, the Cluster Rules will affect our allowable discharges of air and water pollutants, and require us to spend money to ensure compliance with those new rules.

As is the case with any industrial operation, we have, in the past, incurred costs associated with the remediation of soil or groundwater contamination, as required by the federal Comprehensive Environmental Response, Compensation and Liability Act, commonly known as the federal "Superfund" law, and analogous state laws. Cleanup requirements arise with respect to properties we currently own or operate, former facilities and off-site facilities where we have disposed of hazardous substances. Under the terms of the contribution agreement, Pactiv has agreed to retain all liability for all former facilities and all sites associated with pre-closing off-site waste disposal. Pactiv has also retained environmentally impaired real property in Filer City, Michigan unrelated to current mill operations.

Because liability for remediation costs under environmental laws is strict, meaning that liability is imposed without fault, joint and several, meaning that liability is imposed on each party without regard to contribution, and retroactive, we could receive notifications of cleanup liability in the future and this liability could be material. From January 1994 through December 2002, remediation costs at our mills and converting plants totaled about \$2.9 million. As of December 31, 2002, we maintained an environmental reserve of \$3.7 million, which includes funds relating to onsite landfills and surface impoundments as well as on-going and anticipated remedial projects. Total capital costs for environmental matters, including Cluster Rule compliance, were \$4.3 million for 2002 and we currently estimate 2003 environmental capital expenditures will be \$14.7 million, of which \$4.4 million of the expenditures are to meet Cluster Rule requirements.

Impact of Inflation

PCA does not believe that inflation has had a material impact on its financial position or results of operations during the past three years.

Critical Accounting Policies

Management's discussion and analysis of our financial condition and results of operations are based upon our consolidated financial statements, which have been prepared in accordance with accounting principles generally accepted in the United States of America. The preparation of these financial statements requires us to make estimates and judgments that affect the reported amounts of assets, liabilities, revenues and expenses, and related disclosures of contingent assets and liabilities. On an ongoing basis, we evaluate our estimates, including those related to bad debts, inventories, intangible assets, pensions and other post-retirement benefits, income taxes, and contingencies and litigation. We base our estimates on historical experience and on various other assumptions that are believed to be reasonable under the circumstances, the results of which form the basis for making judgments about the carrying values of assets and liabilities that are not readily apparent from other sources. Actual results may differ from these estimates under different assumptions or conditions.

We believe the following critical accounting policies affect our more significant judgments and estimates used in the preparation of our consolidated financial statements. For a further discussion on the application of these and other accounting policies, see Note 2 to our audited consolidated financial statements included elsewhere in this report.

Accounts Receivable—Allowance for Doubtful Accounts

We evaluate the collectibility of our accounts receivable based upon a combination of factors. In circumstances where we are aware of a specific customer's inability to meet its financial obligations to us (e.g., bankruptcy filings, substantial downgrading of credit sources), we record a specific reserve for bad debts against amounts due to reduce the net recognized receivable to the amount we reasonably believe will be collected. For all other customers, we recognize reserves for bad debts consisting of 0.3% for amounts less than 90 days past due and 30% for amounts more than 90 days past due based on our historical collection experience. If our collection experience deteriorates (i.e., higher than expected defaults or an unexpected material adverse change in a major customer's ability to meet its financial obligations to us), our estimates of the recoverability of amounts due us could be reduced by a material amount.

As of December 31, 2002, the balance in the allowance for doubtful accounts reserve was \$5.8 million, compared to \$5.2 million at December 31, 2001. Bad debt expense in 2002 was \$3.0 million, compared to \$0.7 million in 2001. Of the \$2.3 million increase, \$1.7 million was attributable to three customers that filed for bankruptcy during 2002. For the year ended December 31, 2001 bad debt expense was \$0.7 million compared to \$5.8 million in 2000. During 2000, \$2.8 million of bad debt expense was attributable to six customers that filed for bankruptcy during the year.

Inventory

We record our inventory at the lower of cost or market. The estimated market value is based on assumptions for future demand and related pricing. If actual market conditions are less favorable than those projected by management, reductions in the value of inventory may be required. Raw materials, work in process and finished goods are valued using the lower of last-in, first-out ("LIFO") cost or market method. Supplies and materials inventories are valued using a moving average cost.

Derivatives

We hold derivative financial instruments to hedge our interest rate risk associated with our variable rate long-term debt. These derivatives qualify for hedge accounting as discussed in Note 2 to our audited consolidated financial statements. We do not speculate in derivatives trading. Hedge accounting results when we designate and document the hedging relationships involving these derivative instruments. While we intend to continue to meet the conditions for hedge accounting, if hedges do not qualify as highly effective or if we did not believe that forecasted transactions would occur, the changes in the fair value of the derivatives used as hedges would be reflected in earnings.

To hedge interest rate risk, interest rate collars are used to protect against rising interest rates and simultaneously guarantee minimum interest rates related to our variable rate debt. These instruments are valued using the market standard methodology of netting the discounted future cash receipts and cash payments. The cash receipts and cash payments are based on an expectation of future interest rates derived from observed market interest rate curves. We have not changed our methods of calculating these fair values or developing the underlying assumptions. The values of these derivatives will change over time as cash receipts and payments are made and as market conditions change. Information about the fair values, notional amounts, and contractual terms of these instruments can be found in Notes 6 and 7 to our audited consolidated financial statements and the section titled "Quantitative and Qualitative Disclosures About Market Risk." included elsewhere in this report.

In addition to the above derivative financial instruments, we have other contracts covering a portion of our purchases of natural gas and electricity that have the characteristics of derivatives but are not required to be accounted for as derivatives. These contracts for the physical delivery of these items qualify for the normal purchases exception under SFAS No. 133 as we take physical delivery of the item and use it in the production process. This exception is an election and, if not elected, these contracts would be carried on the balance sheet at fair value with changes in fair value reflected in income. These contracts cover natural gas and electricity usage at our mills through 2004. At December 31, 2002, estimated future payments under these contracts amounted to \$19.7 million.

Environmental Liabilities

The estimated landfill closure and postclosure maintenance costs expected to be incurred upon and subsequent to the closing of existing operating landfill areas are accrued based on the landfill capacity used to date. Amounts are estimates using current technologies for closure and monitoring and are not discounted.

The potential costs for various environmental matters are uncertain due to such factors as the unknown magnitude of possible cleanup costs, the complexity and evolving nature of governmental laws and regulations and their interpretations, and the timing, varying costs and effectiveness of alternative cleanup technologies. Liabilities recorded for environmental contingencies are estimates of the probable costs based upon available information and assumptions. Because of these uncertainties, however, our estimates may change. We believe that any additional costs identified as further information becomes available would not have a material effect on our financial statements.

In connection with the sale to PCA of the containerboard and corrugated products business of Pactiv Corporation in April 1999, Pactiv agreed to retain all liability for all former facilities and all sites associated with offsite waste disposal prior to April 12, 1999. Pactiv also retained environmental liability for a closed landfill located near the Filer City mill.

Revenue Recognition

We recognize revenue as title to the products is transferred to customers.

Impairment of Long-Lived Assets

Long-lived assets to be held and used are reviewed for impairment whenever events or changes in circumstances indicate that the carrying amount of an asset may not be fully recoverable. In the event that facts and circumstances indicate that the carrying amount of any long-lived assets may be impaired, an evaluation of recoverability would be performed. If an evaluation were required, the estimated future undiscounted cash flows associated with the asset would be compared to the asset's carrying amount to determine if a write-down to fair value were required.

Goodwill is tested annually for impairment in accordance with SFAS No. 142, "Goodwill and Other Intangible Assets."

New Accounting Standards

For a description of changes in accounting principles affecting PCA, see Note 2 to PCA's audited consolidated financial statements included elsewhere in this report.

Item 7A. QUANTITATIVE AND QUALITATIVE DISCLOSURES ABOUT MARKET RISK

PCA is exposed to the impact of interest rate changes and changes in the market value of its financial instruments. PCA periodically enters into derivatives in order to minimize these risks, but not for trading purposes.

PCA has interest rate collar agreements that protect against rising interest rates and simultaneously guarantee a minimum interest rate. The notional amount of these collar agreements was \$78.8 million and \$175.0 million as of December 31, 2002 and 2001, respectively. The weighted average floor of the interest rate collar agreements was 4.95% and 5.02% as of December 31, 2002 and 2001, respectively. The weighted average ceiling of the interest rate collar agreements was 6.75% and 6.85% as of December 31, 2002 and 2001. The interest rate on approximately 41% and 71% of PCA's variable-rate debt as of December 31, 2002 and 2001, respectively, was capped. PCA receives payments under the collar agreements if the applicable interest rate (LIBOR or commercial paper) exceeds the ceiling. Correspondingly, PCA makes payments under the collar agreements if the applicable interest rate drops below the floor. In both cases, the amounts received or paid are based upon the notional amount and the difference between the actual interest rate and the ceiling or floor rate. At December 31, 2002, the commercial paper based interest rate collar agreement expired. The remaining interest rate collar agreement, with a floor of 4.95%, expires June 30, 2003.

As a result of the collar agreements noted above and the interest rate environment, a one percent increase in interest rates would result in an increase in interest expense and a corresponding decrease in income before taxes of approximately \$1.1 million and \$0.7 million annually for the years ended December 31, 2002 and 2001, respectively. As of December 31, 2002 and 2001, the weighted average LIBOR was 1.40% and 1.91%, respectively, and the weighted average commercial paper rate was 1.40% and 1.92%, respectively. The effect of an interest rate change to the fair market value of the outstanding debt is insignificant. This analysis does not consider any other impact on fair market value that could exist in such an interest rate environment. In the event of a change in interest rates, management could take actions to further mitigate its exposure to the change. However, due to the uncertainty of the specific actions that would be taken and their possible effects, the sensitivity analysis assumes no changes in PCA's financial structure.

Item 8. FINANCIAL STATEMENTS AND SUPPLEMENTARY DATA

The response to this item is included in a separate section of this report on page F-1.

Item 9. CHANGES IN AND DISAGREEMENTS WITH ACCOUNTANTS ON ACCOUNTING AND FINANCIAL DISCLOSURES

There were no changes in or disagreements with PCA's accountants during 2002 or 2001.

PART III

Item 10. DIRECTORS AND EXECUTIVE OFFICERS OF THE REGISTRANT

Information with respect to PCA's directors is included under the caption "Board of Directors" in PCA's Proxy Statement, and is incorporated herein by reference. Information regarding certain Section 16(a) compliance is included under the caption "Section 16(a) Beneficial Ownership Reporting Compliance" in PCA's Proxy Statement, and is incorporated herein by reference.

Executive Officers

Brief statements setting forth the age at March 18, 2003, the principal occupation, employment during the past five years, the year in which such person first became an officer of PCA, and other information concerning each of our executive officers appears below.

Paul T. Stecko is 58 years old and has served as Chief Executive Officer of PCA since January 1999 and as Chairman of PCA since March 1999. From November 1998 to April 1999, Mr. Stecko served as President and Chief Operating Officer of Tenneco Inc. From January 1997 to November 1998, Mr. Stecko served as Chief Operating Officer of Tenneco. From December 1993 through January 1997, Mr. Stecko served as President and Chief Executive Officer of Tenneco Packaging Inc. Prior to joining Tenneco Packaging, Mr. Stecko spent 16 years with International Paper Company. Mr. Stecko is a member of the board of directors of Pactiv Corporation, Tenneco Automotive Inc., State Farm Mutual Insurance Company, American Forest and Paper Association and Cives Corporation.

William J. Sweeney is 62 years old and has served as Executive Vice President—Corrugated Products of PCA since April 1999. From May 1997 to April 1999, Mr. Sweeney served as Executive Vice President—Paperboard Packaging of Tenneco Packaging Inc. From May 1990 to May 1997, Mr. Sweeney served as Senior Vice President and General Manager—Containerboard Products of Tenneco Packaging. From 1983 to May 1990, Mr. Sweeney served as General Manager and Vice President of Stone Container Corporation. From 1978 to 1983, Mr. Sweeney served as Sales Manager, Operations Manager and Division Vice President at Continental Group and from 1967 to 1978, as Sales Manager and General Manager of Boise Cascade Corporation.

Mark W. Kowlzan is 48 years old and has served as Senior Vice President—Containerboard of PCA since March 2002 and as Vice President from April 1999 to March 2002. From 1998 to April 1999, Tenneco Packaging Inc. employed Mr. Kowlzan as Vice President and General Manager—Containerboard and from May 1996 to 1998, as Operations Manager and Mill Manager of the Counce mill. Prior to joining Tenneco Packaging, Mr. Kowlzan spent 15 years at International Paper Company, where he held a series of operational positions within its mill organization.

Richard B. West is 50 years old and has served as Chief Financial Officer of PCA since March 1999, as Corporate Secretary since April 1999 and also as Senior Vice President since March 2002. From April 1999 to March 2002, Mr. West served as Vice President and from March 1999 to June 1999, Mr. West also served as Treasurer of PCA. Mr. West served as Vice President of Finance—Paperboard Packaging of Tenneco Packaging Inc. from 1995 to April 1999. Prior to joining Tenneco Packaging, Mr. West spent 20 years with International Paper Company where he served as an Internal Auditor, Internal Audit Manager and Manufacturing Controller for the Printing Papers Group and Director/ Business Process Redesign.

Stephen T. Calhoun is 57 years old and was promoted to Vice President, Human Resources of PCA in November 2002. From July 1997 to October 2002, Mr. Calhoun served as Director, Human Resources of Corporate and Containerboard Division. From April 1989 to July 1997, Mr. Calhoun was employed principally by Tenneco Packaging Inc. where he held the positions of Area Employee Relations Manager and Human Resources Manager. Prior to joining Tenneco Packaging in 1989, Mr. Calhoun spent fifteen years with the then American Can Company where he held several human resources and manufacturing positions.

Item 11. EXECUTIVE COMPENSATION

Information with respect to executive compensation is included under the caption "Executive Compensation" in PCA's Proxy Statement and is incorporated herein by reference, other than the Report of the Compensation Committee and the Performance Graph.

Item 12. SECURITY OWNERSHIP OF CERTAIN BENEFICIAL OWNERS AND MANAGEMENT AND RELATED STOCKHOLDER MATTERS

Information with respect to security ownership of certain beneficial owners and management is included under the caption "Information Regarding Beneficial Ownership of our Principal Shareholders, Directors and Management" in PCA's Proxy Statement and is incorporated herein by reference.

Information with respect to securities authorized for issuance under equity compensation plans is included under the caption "Compensation of Executive Officers" in PCA's Proxy Statement and is incorporated herein by reference.

Item 13. CERTAIN RELATIONSHIPS AND RELATED TRANSACTIONS

Information with respect to certain relationships and related transactions is included under the caption "Certain Relationships and Related Transactions" in PCA's Proxy Statement and is incorporated herein by reference.

Item 14. CONTROLS AND PROCEDURES

PCA's Chief Executive Officer and Chief Financial Officer evaluated the effectiveness of PCA's disclosure controls and procedures, as defined in Rules 13a-14 and 15d-14 of the Securities Exchange Act of 1934, as of a date within 90 days of the filing date of this annual report and concluded that PCA's disclosure controls and procedures were functioning properly as of the evaluation date.

Based on this most recent evaluation, there do not appear to have been any significant changes in PCA's internal controls or in other factors that could significantly affect these controls subsequent to the date of this evaluation, including any corrective actions with regard to significant deficiencies and material weaknesses. The results of this evaluation have been discussed with PCA's Audit Committee and with Ernst & Young LLP, PCA's independent auditors.

PART IV

Item 15. EXHIBITS, FINANCIAL STATEMENT SCHEDULES AND REPORTS ON FORM 8-K

(a) The following documents are filed as a part of this report:

- (1) The financial statements listed in the "Index to Financial Statements."
- (2) Financial Statement Schedules

The following consolidated financial statement schedule of PCA for the years ended December 31, 2002, 2001 and 2000 is included in this report.

Schedule II—Packaging Corporation of America—Valuation and Qualifying Accounts.

| <u>Allowance for doubtful accounts receivable</u> | <u>Balance Beginning of Year</u> | <u>Provision (Benefit)</u> | <u>Additions/ Deductions from Reserves*</u> | <u>Translation Adjustments</u> | <u>Balance End of Year</u> |
|---|----------------------------------|----------------------------|---|--------------------------------|----------------------------|
| 2002..... | 5,232 | 2,963 | (2,374) | — | 5,821 |
| 2001..... | 6,394 | 674 | (1,836) | — | 5,232 |
| 2000..... | 4,681 | 5,820 | (4,107) | — | 6,394 |

* Consists primarily of write-offs net of recoveries of bad debts.

All other schedules for which provision is made in the applicable accounting regulations of the Securities and Exchange Commission are not required under the related instructions, are inapplicable or not material, or the information called for thereby is otherwise included in the financial statements and therefore has been omitted.

(b) **Reports on Form 8-K**

PCA did not file any Reports on Form 8-K during the last quarter of the period covered by this report.

(c) **Exhibits**

| <u>Exhibit Number</u> | <u>Description</u> |
|-----------------------|---|
| 2.1 | Contribution Agreement, dated as of January 25, 1999, among Pactiv Corporation (formerly known as Tenneco Packaging Inc.) ("Pactiv"), PCA Holdings LLC ("PCA Holdings") and Packaging Corporation of America ("PCA").(2) |
| 2.2 | Letter Agreement Amending the Contribution Agreement, dated as of April 12, 1999, among Pactiv, PCA Holdings and PCA.(2) |
| 3.1 | Restated Certificate of Incorporation of PCA.(2) |
| 3.2 | Form of Certificate of Amendment to Restated Certificate of Incorporation of PCA.(1) |
| 3.3 | Form of Second Amended and Restated By-laws of PCA.(1) |
| 4.1 | Indenture, dated as of April 12, 1999, by and among PCA, Dahlonga Packaging Corporation ("Dahlonga"), Dixie Container Corporation ("Dixie"), PCA Hydro Inc. ("PCA Hydro"), PCA Tomahawk Corporation ("PCA Tomahawk"), PCA Valdosta Corporation ("PCA Valdosta") and United States Trust Company of New York.(2) |
| 4.2 | Form of Rule 144A Global Note and Subsidiary Guarantee. (Incorporated herein by reference to Exhibit 4.6 to PCA's Registration Statement on Form S-4, Registration No. 333-79511.) |

| <u>Exhibit Number</u> | <u>Description</u> |
|---------------------------|---|
| 4.3 | Form of certificate representing shares of common stock. (Incorporated herein by reference to Exhibit 4.9 to PCA's Registration Statement on Form S-1, Registration No. 333-86963.) |
| 10.1 | Amended and Restated Credit Agreement, dated as of April 12, 1999, and Amended and Restated as of June 29, 2000, among PCA, the lenders party thereto from time to time, J.P. Morgan Securities Inc. ("J.P. Morgan"), Deutsche Bank Securities Inc. ("Deutsche Bank"), Goldman Sachs Credit Partners L.P. ("Goldman Sachs") and Morgan Guaranty Trust Company of New York ("Morgan Guaranty").(3) |
| 10.2 | First Amendment, dated as of September 11, 2000, among PCA, the lenders party to the Amended and Restated Credit Agreement, J.P. Morgan, Deutsche Bank, Goldman Sachs, and Morgan Guaranty. (Incorporated herein by reference to Exhibit 10.1 to PCA's Quarterly Report on Form 10-Q for the period ended September 30, 2000.) |
| 10.3 | Subsidiaries Guaranty, dated as of April 12, 1999, made by Dahlonga, Dixie, PCA Hydro, PCA Tomahawk, PCA Valdosta and Morgan Guaranty.(2) |
| 10.4 | Pledge Agreement, dated as of April 12, 1999, among PCA, Dahlonga, Dixie, PCA Hydro, PCA Tomahawk, PCA Valdosta and Morgan Guaranty.(2) |
| 10.5 | TPI Security Agreement, dated as of April 12, 1999, between Pactiv and Morgan Guaranty.(2) |
| 10.6 | PCA Security Agreement, dated as of April 12, 1999, among PCA, Dahlonga, Dixie, PCA Hydro, PCA Tomahawk, PCA Valdosta and Morgan Guaranty.(2) |
| 10.7 | Second Amendment, dated as of March 8, 2002, among PCA, the lenders party to the Amended and Restated Credit Agreement, J.P. Morgan, Deutsche Bank, Goldman Sachs and JPMorgan Chase Bank. (Incorporated herein by reference to Exhibit 10.1 to PCA's Quarterly Report on Form 10-Q for the period ended March 31, 2002.) |
| 10.8 | Registration Rights Agreement, dated as of April 12, 1999, by and among Pactiv, PCA Holdings and PCA.(2) |
| 10.9 | Holding Company Support Agreement, dated as of April 12, 1999, by and between PCA Holdings and PCA.(2) |
| 10.10 | Intentionally omitted. |
| 10.11 | Human Resources Agreement, dated as of April 12, 1999, by and among Tenneco Automotive Inc. (formerly known as Tenneco Inc.), Pactiv and PCA.(2) |
| 10.12 | Purchase/Supply Agreement, dated as of April 12, 1999, between PCA and Tenneco Packaging Speciality and Consumer Products Inc.(2) |
| 10.13 | Purchase/Supply Agreement, dated as of April 12, 1999, between PCA and Pactiv.(2) |
| 10.14 | Purchase/Supply Agreement, dated as of April 12, 1999, between PCA and Tenneco Automotive Inc.(2) |
| 10.15 | Technology, Financial and Administrative Transition Services Agreement, dated as of April 12, 1999, between Pactiv and PCA.(2) |
| 10.16 | Letter Agreement Regarding Terms of Employment, dated as of January 25, 1999, between PCA and Paul T. Stecko.*(2) |
| 10.17 | Letter Agreement Regarding Terms of Employment, dated as of May 19, 1999, between PCA and Paul T. Stecko.*(2) |

| <u>Exhibit Number</u> | <u>Description</u> |
|-----------------------|--|
| 10.18 | 1999 Long-Term Equity Incentive Plan, effective as of October 19, 1999. *(1) |
| 10.19 | Management Equity Agreement, dated as of June 1, 1999, among PCA, Paul T. Stecko and the Paul T. Stecko 1999 Dynastic Trust. *(2) |
| 10.20 | Form of Management Equity Agreement, dated as of June 1, 1999, among PCA and the members of management party thereto. *(2) |
| 10.21 | Intentionally omitted. |
| 10.22 | Amended and Restated 1999 Management Equity Compensation Plan, effective as of June 2, 1999. *(2) |
| 10.23 | Credit and Security Agreement, dated as of November 29, 2000, among Packaging Receivables Company, LLC ("PRC"), Packaging Credit Company, LLC ("PCC"), Blue Ridge Asset Funding Corporation and Wachovia Bank, N.A.(4) |
| 10.24 | Receivables Sale Agreement, dated as of November 29, 2000, between PCC and PCA.(4) |
| 10.25 | Purchase and Sale Agreement, dated as of November 29, 2000, between PCC and PRC.(4) |
| 21.1 | Subsidiaries of the Registrant. |
| 23.1 | Consent of Ernst & Young LLP. |
| 24.1 | Powers of Attorney. |
| 99.1 | Certification of Chief Executive Officer and Chief Financial Officer pursuant to 18 U.S.C. §1350, as adopted pursuant to Section 906 of the Sarbanes-Oxley Act of 2002. |
| 99.2 | Risk Factors. |

* Management contract or compensatory plan or arrangement.

- (1) Incorporated herein by reference to the same numbered exhibit to PCA's Registration Statement on Form S-1 (Registration No. 333-86963).
- (2) Incorporated herein by reference to the same numbered exhibit to PCA's Registration Statement on Form S-4 (Registration No. 333-79511).
- (3) Incorporated herein by reference to the same numbered exhibit to PCA's Quarterly Report on Form 10-Q for the period ended June 30, 2000.
- (4) Incorporated herein by reference to the same numbered exhibit to PCA's Annual Report on Form 10-K for the period ended December 31, 2001.

SIGNATURES

Pursuant to the requirements of Section 13 or 15(d) of the Securities Exchange Act of 1934, the registrant has duly caused this report to be signed on its behalf by the undersigned, thereunto duly authorized on March 18, 2003.

Packaging Corporation of America

By: /s/ Paul T. Stecko

Name: Paul T. Stecko

Title: Chairman and Chief Executive Officer

By: /s/ Richard B. West

Name: Richard B. West

Title: Senior Vice President, Chief Financial Officer and Corporate Secretary

Pursuant to the requirements of the Securities Exchange Act of 1934, this report has been signed below by the following persons on behalf of the registrant and in the capacities indicated on March 18, 2003.

| <u>Signature</u> | <u>Title</u> |
|---|---|
| <u>/s/ Paul T. Stecko</u> Paul T. Stecko | Chairman of the Board and Chief Executive Officer (Principal Executive Officer) |
| <u>/s/ Richard B. West</u> Richard B. West | Senior Vice President, Chief Financial Officer and Corporate Secretary (Principal Financial and Accounting Officer) |
| <u>*</u> Henry F. Frigon | Director |
| <u>*</u> Louis A. Holland | Director |
| <u>*</u> Justin S. Huscher | Director |
| <u>*</u> Samuel M. Menco | Director |
| <u>*</u> Thomas S. Souleles | Director |
| <u>*</u> Rayford K. Williamson | Director |

*By: /s/ Richard B. West
Richard B. West
(Attorney-In-Fact)

CERTIFICATIONS

I, Paul T. Stecko, certify that:

- (1) I have reviewed this annual report on Form 10-K of Packaging Corporation of America;
- (2) Based on my knowledge, this annual report does not contain any untrue statement of a material fact or omit to state a material fact necessary to make the statements made, in light of the circumstances under which such statements were made, not misleading with respect to the period covered by this annual report;
- (3) Based on my knowledge, the financial statements, and other financial information included in this annual report, fairly present in all material respects the financial condition, results of operations and cash flows of Packaging Corporation of America as of, and for, the periods presented in this annual report;
- (4) PCA's other certifying officer and I are responsible for establishing and maintaining disclosure controls and procedures (as defined in Exchange Act Rules 13a-14 and 15d-14) for PCA and we have:
 - a) designed such disclosure controls and procedures to ensure that material information relating to PCA, including its consolidated subsidiaries, is made known to us by others within those entities, particularly during the period in which this annual report is being prepared;
 - b) evaluated the effectiveness of PCA's disclosure controls and procedures as of a date within 90 days prior to the filing of this annual report (the "Evaluation Date"); and
 - c) presented in this annual report our conclusions about the effectiveness of the disclosure controls and procedures based on our evaluation as of the Evaluation Date;
- (5) PCA's other certifying officer and I have disclosed, based on our most recent evaluation, to PCA's auditors and the Audit Committee of PCA's Board of Directors (or persons performing the equivalent function):
 - a) all significant deficiencies in the design or operation of internal controls which could adversely affect the PCA's ability to record, process, summarize and report financial data and have identified for the PCA's auditors any material weaknesses in internal controls; and
 - b) any fraud, whether or not material, that involves management or other employees who have a significant role in PCA's internal controls; and
- (6) PCA's other certifying officer and I have indicated in this annual report whether or not there were significant changes in internal controls or in other factors that could significantly affect internal controls subsequent to the date of our most recent evaluation, including any corrective actions with regard to significant deficiencies and material weaknesses.

/s/ Paul T. Stecko

Paul T. Stecko

Chairman and Chief Executive Officer

March 18, 2003

I, Richard B. West, certify that:

- (1) I have reviewed this annual report on Form 10-K of Packaging Corporation of America;
- (2) Based on my knowledge, this annual report does not contain any untrue statement of a material fact or omit to state a material fact necessary to make the statements made, in light of the circumstances under which such statements were made, not misleading with respect to the period covered by this annual report;
- (3) Based on my knowledge, the financial statements, and other financial information included in this annual report, fairly present in all material respects the financial condition, results of operations and cash flows of Packaging Corporation of America as of, and for, the periods presented in this annual report;
- (4) PCA's other certifying officer and I are responsible for establishing and maintaining disclosure controls and procedures (as defined in Exchange Act Rules 13a-14 and 15d-14) for PCA and we have:
 - a. designed such disclosure controls and procedures to ensure that material information relating to PCA, including its consolidated subsidiaries, is made known to us by others within those entities, particularly during the period in which this annual report is being prepared;
 - b. evaluated the effectiveness of PCA's disclosure controls and procedures as of a date within 90 days prior to the filing of this annual report (the "Evaluation Date"); and
 - c. presented in this annual report our conclusions about the effectiveness of the disclosure controls and procedures based on our evaluation as of the Evaluation Date;
- (5) PCA's other certifying officer and I have disclosed, based on our most recent evaluation, to PCA's auditors and the Audit Committee of PCA's Board of Directors (or persons performing the equivalent function):
 - a. all significant deficiencies in the design or operation of internal controls which could adversely affect PCA's ability to record, process, summarize and report financial data and have identified for PCA's auditors any material weaknesses in internal controls; and
 - b. any fraud, whether or not material, that involves management or other employees who have a significant role in PCA's internal controls; and
- (6) PCA's other certifying officer and I have indicated in this annual report whether or not there were significant changes in internal controls or in other factors that could significantly affect internal controls subsequent to the date of our most recent evaluation, including any corrective actions with regard to significant deficiencies and material weaknesses.

/s/ Richard B. West
Richard B. West
*Senior Vice President, Chief Financial Officer
and Corporate Secretary*

March 18, 2003

INDEX TO FINANCIAL STATEMENTS

| | |
|---|-----|
| Packaging Corporation of America Consolidated Financial Statements as of December 31, 2002, 2001 and 2000 | |
| Report of Ernst & Young LLP, independent auditors | F-2 |
| Consolidated balance sheets as of December 31, 2002 and 2001 | F-3 |
| Consolidated statements of income for the years ended December 31, 2002, 2001 and 2000 | F-4 |
| Consolidated statements of changes in shareholders' equity for the years ended December 31, 2002, 2001 and 2000 | F-5 |
| Consolidated statements of cash flows for the years ended December 31, 2002, 2001 and 2000 .. | F-6 |
| Notes to consolidated financial statements. | F-7 |

REPORT OF INDEPENDENT AUDITORS

Board of Directors and Shareholders of Packaging Corporation of America:

We have audited the accompanying consolidated balance sheets of Packaging Corporation of America (the "Company") as of December 31, 2002 and 2001, and the related consolidated statements of income, changes in shareholders' equity and cash flows for each of the three years in the period ended December 31, 2002. Our audits also included the financial statement schedule listed in the index at Item 15(a). These financial statements and schedule are the responsibility of the Company's management. Our responsibility is to express an opinion on these financial statements and schedule based on our audits.

We conducted our audits in accordance with auditing standards generally accepted in the United States. Those standards require that we plan and perform the audit to obtain reasonable assurance about whether the financial statements are free of material misstatement. An audit includes examining, on a test basis, evidence supporting the amounts and disclosures in the financial statements. An audit also includes assessing the accounting principles used and significant estimates made by management, as well as evaluating the overall financial statement presentation. We believe that our audits provide a reasonable basis for our opinion.

In our opinion, the financial statements referred to above present fairly, in all material respects, the consolidated financial position of Packaging Corporation of America at December 31, 2002 and 2001, and the consolidated results of its operations and its cash flows for each of the three years in the period ended December 31, 2002, in conformity with accounting principles generally accepted in the United States. Also, in our opinion, the related financial statement schedule, when considered in relation to the basic financial statements taken as a whole, presents fairly, in all material respects, the information set forth therein.

As discussed in Note 2 to the audited consolidated financial statements, the Company adopted Statement of Financial Accounting Standards No. 133, "Accounting for Derivative Instruments and Hedging Activities," as amended, on January 1, 2001.

Ernst & Young LLP

Chicago, Illinois
January 20, 2003

Packaging Corporation of America
Consolidated Balance Sheets
As of December 31, 2002 and 2001

| | 2002 | 2001 |
|--|--------------------|--------------------|
| <i>(In thousands, except share and per share amounts)</i> | | |
| Assets | | |
| Current assets: | | |
| Cash and cash equivalents | \$ 131,305 | \$ 82,465 |
| Accounts and notes receivable, net of allowance for doubtful accounts of \$5,821 and \$5,232 as of December 31, 2002 and 2001, respectively | 175,716 | 170,175 |
| Inventories | 160,549 | 170,173 |
| Prepaid expenses and other current assets | 22,600 | 12,058 |
| Deferred income taxes | 19,384 | 13,346 |
| Total current assets | 509,554 | 448,217 |
| Property, plant and equipment, net | 1,408,980 | 1,451,224 |
| Intangible assets, net of accumulated amortization of \$1,726 and \$1,647 as of December 31, 2002 and 2001, respectively | 3,854 | 4,037 |
| Other long-term assets | 60,163 | 68,302 |
| Total assets | \$1,982,551 | \$1,971,780 |
| Liabilities and shareholders' equity | | |
| Current liabilities: | | |
| Short-term debt and current maturities of long-term debt | \$ 113,094 | \$ 54 |
| Accounts payable | 85,807 | 93,873 |
| Accrued interest | 13,362 | 13,590 |
| Accrued liabilities | 84,543 | 84,378 |
| Total current liabilities | 296,806 | 191,895 |
| Long-term liabilities: | | |
| Long-term debt | 629,119 | 795,163 |
| Deferred income taxes | 241,372 | 194,452 |
| Other liabilities | 19,379 | 20,436 |
| Total long-term liabilities | 889,870 | 1,010,051 |
| Shareholders' equity: | | |
| Common stock (par value \$.01 per share, 300,000,000 shares authorized, 104,510,094 shares and 105,570,203 shares issued as of December 31, 2002 and 2001, respectively) | 1,045 | 1,056 |
| Additional paid in capital | 466,911 | 490,915 |
| Retained earnings | 329,065 | 280,886 |
| Accumulated other comprehensive income (loss): | | |
| Unrealized loss on derivatives, net | (811) | (2,967) |
| Cumulative foreign currency translation adjustment | (1) | — |
| Total accumulated other comprehensive income (loss) | (812) | (2,967) |
| Common stock held in treasury, at cost (18,800 shares and 3,000 shares as of December 31, 2002 and 2001, respectively) | (334) | (56) |
| Total shareholders' equity | 795,875 | 769,834 |
| Total liabilities and shareholders' equity | \$1,982,551 | \$1,971,780 |

See notes to consolidated financial statements.

Packaging Corporation of America
Consolidated Statements of Income

| | Year Ended December 31, | | |
|---|----------------------------|--------------------|--------------------|
| | 2002 | 2001 | 2000 |
| <i>(In thousands, except per share amounts)</i> | | | |
| Net sales | \$ 1,735,858 | \$ 1,789,956 | \$ 1,921,868 |
| Cost of sales | <u>(1,409,294)</u> | <u>(1,372,019)</u> | <u>(1,418,465)</u> |
| Gross profit | 326,564 | 417,937 | 503,403 |
| Selling and administrative expenses | (132,477) | (123,886) | (118,373) |
| Other income (expense), net | (8,069) | (4,306) | 59,996 |
| Corporate overhead | <u>(40,738)</u> | <u>(40,290)</u> | <u>(40,192)</u> |
| Income before interest, taxes, cumulative effect of accounting change and extraordinary item | 145,280 | 249,455 | 404,834 |
| Interest expense, net | <u>(67,666)</u> | <u>(74,021)</u> | <u>(117,683)</u> |
| Income before taxes, cumulative effect of accounting change and extraordinary item | 77,614 | 175,434 | 287,151 |
| Provision for income taxes | <u>(29,435)</u> | <u>(67,912)</u> | <u>(114,190)</u> |
| Income before cumulative effect of accounting change and extraordinary item | 48,179 | 107,522 | 172,961 |
| Cumulative effect of accounting change, net of tax | <u>—</u> | <u>(495)</u> | <u>—</u> |
| Income before extraordinary item | 48,179 | 107,027 | 172,961 |
| Extraordinary item, net of tax | <u>—</u> | <u>(609)</u> | <u>(11,060)</u> |
| Net income | 48,179 | 106,418 | 161,901 |
| Preferred dividends and accretion of preferred stock issuance costs | <u>—</u> | <u>—</u> | <u>(18,637)</u> |
| Net income available to common shareholders | <u>\$ 48,179</u> | <u>\$ 106,418</u> | <u>\$ 143,264</u> |
| Weighted average common shares outstanding | | | |
| Basic | 105,053 | 106,277 | 104,890 |
| Diluted | 107,208 | 108,801 | 107,518 |
| Basic earnings per common share: | | | |
| Income before cumulative effect of accounting change and extraordinary item | \$ 0.46 | \$ 1.01 | \$ 1.47 |
| Cumulative effect of accounting change | — | — | — |
| Extraordinary item | <u>—</u> | <u>(0.01)</u> | <u>(0.10)</u> |
| Net income per common share | <u>\$ 0.46</u> | <u>\$ 1.00</u> | <u>\$ 1.37</u> |
| Diluted earnings per common share: | | | |
| Income before cumulative effect of accounting change and extraordinary item | \$ 0.45 | \$ 0.99 | \$ 1.43 |
| Cumulative effect of accounting change | — | — | — |
| Extraordinary item | <u>—</u> | <u>(0.01)</u> | <u>(0.10)</u> |
| Net income per common share | <u>\$ 0.45</u> | <u>\$ 0.98</u> | <u>\$ 1.33</u> |

See notes to consolidated financial statements.

Packaging Corporation of America
Consolidated Statements of Changes in Shareholders' Equity
For the Period January 1, 2000 through December 31, 2002

| | Junior Preferred Stock | | Common Stock | | Treasury Stock | | Additional Paid In Capital | | Accumulated Other Comprehensive Income (Loss) | Retained Earnings | Total Shareholders' Equity |
|--|------------------------|--------|--------------|---------|----------------|---------|----------------------------|-----------|---|-------------------|----------------------------|
| | Shares | Amount | Shares | Amount | Shares | Amount | Shares | Amount | | | |
| (In thousands except share data) | | | | | | | | | | | |
| Balance at January 1, 2000 | 100 | \$— | 94,600,000 | \$ 946 | — | \$— | — | \$384,549 | \$— | \$ 31,204 | \$416,699 |
| Net income | — | — | — | — | — | — | — | — | — | 161,901 | 161,901 |
| Initial public offering | — | — | 11,250,000 | 112 | — | — | — | 125,852 | — | — | 125,964 |
| Redemption of preferred stock | — | — | — | — | — | — | — | — | — | (16,266) | (16,266) |
| Dividends declared on preferred stock | — | — | — | — | — | — | — | — | — | (2,291) | (2,291) |
| Accretion of preferred stock costs | — | — | — | — | — | — | — | — | — | (80) | (80) |
| Exercise of stock options | — | — | 398,138 | 4 | — | — | — | 1,807 | — | — | 1,811 |
| Treasury stock | — | — | — | — | (27,470) | (314) | — | — | — | — | (314) |
| Buyout of preferred stock | (100) | — | — | — | — | — | — | — | — | — | — |
| Balance at December 31, 2000 | — | \$— | 106,248,138 | \$1,062 | (27,470) | \$(314) | — | \$512,208 | \$— | \$ 174,468 | \$687,424 |
| Net income | — | — | — | — | — | — | — | — | — | 106,418 | 106,418 |
| Loss on derivatives | — | — | — | — | — | — | — | — | (3,329) | — | (3,329) |
| Loss on derivatives, net of \$2,143 income taxes | — | — | — | — | — | — | — | — | — | — | — |
| Less: reclassification adjustment, net of (\$233) income taxes | — | — | — | — | — | — | — | — | 362 | — | 362 |
| Total comprehensive income, net of tax | — | — | — | — | — | — | — | — | — | — | — |
| Exercise of stock options | — | — | 1,669,735 | 17 | — | — | — | 17,270 | — | — | 17,287 |
| Common stock (repurchases)/retirement, net | — | — | (2,347,670) | (23) | 24,470 | 258 | — | (38,563) | — | — | (38,328) |
| Balance at December 31, 2001 | — | \$— | 105,570,203 | \$1,056 | (3,000) | \$(56) | — | \$490,915 | \$(2,967) | \$ 280,886 | \$769,834 |
| Net income | — | — | — | — | — | — | — | — | — | 48,179 | 48,179 |
| Gain on derivatives, net of \$1,388 income taxes | — | — | — | — | — | — | — | — | 2,156 | — | 2,156 |
| Foreign currency translation adjustment | — | — | — | — | — | — | — | — | (1) | — | (1) |
| Total comprehensive income, net of tax | — | — | — | — | — | — | — | — | — | — | — |
| Exercise of stock options | — | — | 811,791 | 8 | — | — | — | 8,686 | — | — | 50,334 |
| Common stock (repurchases)/retirement, net | — | — | (1,871,900) | (19) | (15,800) | (278) | — | (32,690) | — | — | 8,694 |
| Balance at December 31, 2002 | — | \$— | 104,510,094 | \$1,045 | (18,800) | \$(334) | — | \$466,911 | \$(812) | \$ 329,065 | \$795,875 |

See notes to consolidated financial statements.

Packaging Corporation of America
Consolidated Statements of Cash Flows

| | Year Ended December 31, | | |
|---|----------------------------|------------|------------|
| | 2002 | 2001 | 2000 |
| <i>(In thousands)</i> | | | |
| Cash Flows from Operating Activities: | | | |
| Net income | \$ 48,179 | \$ 106,418 | \$ 161,901 |
| Adjustments to reconcile net income to net cash provided by operating activities: | | | |
| Depreciation, depletion and amortization | 149,380 | 141,516 | 140,841 |
| Amortization of financing costs | 4,033 | 4,851 | 7,375 |
| Cumulative effect of accounting change | — | 495 | — |
| Extraordinary loss—early debt extinguishment | — | 609 | 11,060 |
| Increase in deferred income taxes | 36,006 | 46,354 | 83,276 |
| Gain on sale of timberlands | — | — | (60,414) |
| (Gain) loss on disposal of property, plant and equipment | 5,171 | 1,718 | (103) |
| Pension and postemployment benefits | 2,324 | 1,996 | 862 |
| Tax benefit associated with stock option exercises | 4,212 | 9,562 | — |
| Other, net | 369 | 516 | 1,668 |
| Changes in components of working capital: | | | |
| (Increase) decrease in current assets— | | | |
| Accounts receivable | (5,592) | 47,077 | (6,940) |
| Inventories | 9,624 | (9,821) | 5,207 |
| Prepaid expenses and other | (6,194) | (6,285) | 2,443 |
| Increase (decrease) in current liabilities— | | | |
| Accounts payable | (8,074) | (21,910) | (13,663) |
| Accrued liabilities | 578 | (8,799) | 7,490 |
| Net cash provided by operating activities | 240,016 | 314,297 | 341,003 |
| Cash Flows from Investing Activities: | | | |
| Additions to property, plant and equipment | (107,404) | (131,158) | (128,991) |
| Additions to long term assets | (5,027) | (3,467) | (4,748) |
| Acquisition of businesses | — | (4,827) | — |
| Proceeds from disposals of property, plant and equipment | 2,806 | 4,570 | 3,249 |
| Proceeds from timberlands sales | — | — | 247,936 |
| Investments in joint venture | — | — | (500) |
| Net cash provided by (used for) investing activities | (109,625) | (134,882) | 116,946 |
| Cash Flows from Financing Activities: | | | |
| Redemption of preferred stock | — | — | (124,432) |
| Proceeds from long-term debt issued | — | — | 142,605 |
| Payments on long-term debt | (53,046) | (74,239) | (602,826) |
| Proceeds from initial public offering | — | — | 126,364 |
| Financing costs | — | — | (3,565) |
| Repurchases of common stock | (32,987) | (38,328) | (314) |
| Issuance of common stock upon exercise of stock options | 4,482 | 7,725 | 1,811 |
| Net cash used for financing activities | (81,551) | (104,842) | (460,357) |
| Net increase (decrease) in cash and cash equivalents | 48,840 | 74,573 | (2,408) |
| Cash and cash equivalents, beginning of period | 82,465 | 7,892 | 10,300 |
| Cash and cash equivalents, end of period | \$ 131,305 | \$ 82,465 | \$ 7,892 |

See notes to consolidated financial statements.

Packaging Corporation of America
Notes to Consolidated Financial Statements
December 31, 2002

1. BASIS OF PRESENTATION AND NATURE OF BUSINESS

Packaging Corporation of America ("PCA" or the "Company") was incorporated on January 25, 1999 pursuant to the General Corporation Law of the State of Delaware. PCA was formed to acquire the containerboard and corrugated packaging products business (the "Group") of Pactiv Corporation, formerly known as Tenneco Packaging Inc., a wholly owned subsidiary of Tenneco Inc. PCA had no operations from the date of incorporation on January 25, 1999 to April 11, 1999.

On April 12, 1999, Pactiv Corporation ("Pactiv") sold the Group to PCA for \$2.2 billion. The Group is the predecessor to PCA. The \$2.2 billion purchase price paid to Pactiv for the Group consisted of \$246.5 million in cash, the assumption of \$1.8 billion of debt incurred by Pactiv immediately prior to closing, and the issuance of a 45% common equity interest in PCA. PCA Holdings LLC, an entity organized and controlled by Madison Dearborn Partners, LLC, acquired the remaining 55% common equity interest in PCA for \$236.5 million in cash. These events are collectively referred to as the "Transactions." Because significant veto rights were retained by Pactiv, the carryover basis of accounting was used and no goodwill was recognized. Fees of \$23.8 million were incurred as part of the Transactions and were recorded as a charge to shareholders' equity.

On August 25, 1999, PCA Holdings LLC and Pactiv agreed that the acquisition consideration should be reduced as a result of a post-closing price adjustment by \$20.0 million. On September 23, 1999, Pactiv paid PCA \$20.7 million, representing the \$20.0 million adjustment and \$0.7 million of interest through the date of payment by Pactiv.

The Company is comprised of mills and corrugated products operations. The mill operations (the "Mills") consist of two kraft linerboard mills located in Counce, Tennessee, and Valdosta, Georgia, and two medium mills located in Filer City, Michigan, and Tomahawk, Wisconsin. The Mills also include two recycling centers located in Nashville and Jackson, Tennessee. The Company leases the cutting rights to approximately 140,000 acres of timberland as of December 31, 2002. The Mills transfer the majority of their output to PCA's corrugated products operations ("Corrugated").

PCA's corrugated manufacturing operations consist of 64 corrugated products plants, a technical and development center, five graphic design centers, a rotogravure printing operation and a complement of packaging supplies and distribution centers. All plants are located in North America. Corrugated products manufacturing plants combine linerboard and medium (primarily from PCA's mills) into sheets that are converted into corrugated shipping containers, point-of-sale graphics packaging, point-of-purchase displays and other specialized packaging. Our corrugated products manufacturing plants sell to diverse customers primarily in North America.

As of December 31, 2002, we had approximately 7,900 employees. Approximately 2,200 of these employees were salaried and approximately 5,700 were hourly. Approximately 75% of our hourly employees are represented by unions. Our unionized employees are represented primarily by the Paper, Allied Industrial, Chemical, Energy Workers International Union, the International Association of Machinists, the Graphic Communications International Union and the United Steel Workers of America (USWA).

The contract for our unionized mill employees at our Valdosta, Georgia kraft linerboard mill expires in September 2003. Contracts for unionized mill employees at our three remaining containerboard mills expire between October 2005 and June 2007. Contracts for unionized converting plant employees expire

Packaging Corporation of America
Notes to Consolidated Financial Statements (Continued)
December 31, 2002

1. BASIS OF PRESENTATION AND NATURE OF BUSINESS (Continued)

between February 2003 and November 2008. We are currently in negotiations to renew or extend any union contracts that have recently expired or are expiring in the near future.

2. SUMMARY OF SIGNIFICANT ACCOUNTING POLICIES

Basis of Consolidation

The accompanying consolidated financial statements of Packaging Corporation of America include all majority-owned subsidiaries. All significant intercompany transactions have been eliminated. The Company has one joint venture that is carried under the equity method.

Use of Estimates

The preparation of financial statements in conformity with generally accepted accounting principles requires management to make estimates and assumptions that affect the amounts in the financial statements and the accompanying notes. Actual results could differ from those estimates.

Cash and Cash Equivalents

Cash and cash equivalents include all cash balances and highly liquid investments with a maturity of three months or less. Cash equivalents are stated at cost, which approximates market.

Accounts Receivable

The collectibility of PCA's accounts receivable is based upon a combination of factors. In circumstances where a specific customer is unable to meet its financial obligations to us (e.g., bankruptcy filings, substantial downgrading of credit sources), a specific reserve for bad debts is recorded against amounts due to reduce the net recognized receivable to the amount we reasonably believe will be collected. For all other customers, reserves for bad debts are recognized consisting of 0.3% for amounts less than 90 days past due and 30% for amounts more than 90 days past due based on historical collection experience. If collection experience deteriorates (i.e., higher than expected defaults or an unexpected material adverse change in a major customer's ability to meet its financial obligations to us), the estimate of the recoverability of amounts due could be reduced by a material amount.

Inventories

Raw materials, work in process and finished goods are valued using the lower of last-in, first-out ("LIFO") cost or market method. Supplies and materials inventories are valued using a moving average cost. All inventories are stated at the lower of cost or market. Inventories valued using the LIFO method comprised 71% and 73% of inventories at current cost at December 31, 2002 and 2001, respectively.

Packaging Corporation of America
Notes to Consolidated Financial Statements (Continued)
December 31, 2002

2. SUMMARY OF SIGNIFICANT ACCOUNTING POLICIES (Continued)

The components of inventories are as follows:

| | <u>December 31,</u> | |
|-------------------------------------|---------------------|------------------|
| | <u>2002</u> | <u>2001</u> |
| <i>(In thousands)</i> | | |
| Raw materials | \$ 73,730 | \$ 82,540 |
| Work in process | 5,423 | 5,989 |
| Finished goods | 49,306 | 51,227 |
| Supplies and materials | 61,571 | 58,118 |
| Inventories at FIFO cost | 190,030 | 197,874 |
| Excess of FIFO over LIFO cost | <u>(29,481)</u> | <u>(27,701)</u> |
| Inventory, net | <u>\$160,549</u> | <u>\$170,173</u> |

Property, Plant and Equipment

Property, plant and equipment and timber and timberlands are recorded at cost.

Property, plant and equipment by major classification are as follows:

| | <u>December 31,</u> | |
|---|---------------------|---------------------|
| | <u>2002</u> | <u>2001</u> |
| <i>(In thousands)</i> | | |
| Land and land improvements | \$ 75,006 | \$ 71,936 |
| Buildings | 298,616 | 292,571 |
| Machinery and equipment | 2,147,210 | 2,071,048 |
| Other | 32,248 | 32,802 |
| Property, plant and equipment, at cost | 2,553,080 | 2,468,357 |
| Less: Accumulated depreciation | <u>(1,173,421)</u> | <u>(1,065,425)</u> |
| Total | 1,379,659 | 1,402,932 |
| Construction in progress | 27,985 | 44,997 |
| Timber and timberlands, at cost, less depletion | 1,336 | 3,295 |
| Property, plant and equipment, net | <u>\$ 1,408,980</u> | <u>\$ 1,451,224</u> |

The amount of interest capitalized related to construction in progress was approximately \$0.4 million, \$0.9 million and \$0.6 million for the years ended December 31, 2002, 2001 and 2000, respectively.

Depreciation is computed on the straight-line basis over the estimated useful lives of the related assets. The following lives are used for the various categories of assets:

| | |
|---------------------------------------|---------------------|
| Buildings and land improvements | 5 to 40 years |
| Machinery and equipment | 3 to 25 years |
| Trucks and automobiles | 3 to 10 years |
| Furniture and fixtures | 3 to 20 years |
| Computers and hardware | 3 to 7 years |
| Leasehold improvements | Period of the lease |

Packaging Corporation of America
Notes to Consolidated Financial Statements (Continued)
December 31, 2002

2. SUMMARY OF SIGNIFICANT ACCOUNTING POLICIES (Continued)

Timber depletion is provided on the basis of timber cut during the period related to the estimated quantity of recoverable timber. Assets under capital leases are depreciated on the straight-line method over the term of the lease.

Expenditures for repairs and maintenance are expensed as incurred.

Intangible Assets

The Company has capitalized certain intangible assets, primarily customer lists, covenants not to compete, and goodwill, based on their estimated fair value at the date of acquisition. Amortization is provided for customer lists on a straight-line basis over periods ranging from 10 to 15 years. Covenants not to compete are amortized on a straight-line basis over the terms of the respective agreements. Goodwill, which amounted to \$1.8 million and \$1.3 million as of December 31, 2002 and 2001, respectively, is not being amortized but is subject to annual impairment tests in accordance with Statement of Financial Accounting Standards ("SFAS") No. 142, "Goodwill and Other Intangible Assets" beginning January 1, 2002. Goodwill amortization was not material during the years ended December 31, 2000 and 2001.

Other Long-Term Assets

PCA has capitalized certain costs related to obtaining its financing. These costs are amortized to interest expense using the effective interest rate method over the terms of the senior credit facility and senior subordinated notes, which range from four years to seven years. Unamortized deferred financing costs were \$19.2 million and \$23.2 million as of December 31, 2002 and 2001, respectively.

PCA currently leases the cutting rights to approximately 140,000 acres of timberland and capitalizes the annual lease payments and reforestation costs associated with these leases. These costs are recorded as depletion when timber is harvested and used in PCA's business operations. Capitalized long-term lease costs were \$21.0 million and \$23.1 million as of December 31, 2002 and 2001, respectively.

PCA also capitalizes certain costs related to the purchase and development of software which is used in its business operations. The costs attributable to these software systems are amortized over their estimated useful lives based on various factors such as the effects of obsolescence, technology and other economic factors. Capitalized software costs were \$11.8 million and \$12.4 million as of December 31, 2002 and 2001, respectively.

Impairment of Long-Lived Assets

Long-lived assets to be held and used are reviewed for impairment in accordance with provisions of SFAS No. 144, "Accounting for the Impairment or Disposal of Long-Lived Assets." In the event that facts and circumstances indicate that the carrying amount of any long-lived assets may be impaired, an evaluation of recoverability would be performed. If an evaluation is required, the estimated future undiscounted cash flows associated with the asset would be compared to the asset's carrying amount to determine if a write-down to fair value is required.

Goodwill is tested annually for impairment in accordance with SFAS No. 142, "Goodwill and Other Intangible Assets."

Packaging Corporation of America
Notes to Consolidated Financial Statements (Continued)
December 31, 2002

2. SUMMARY OF SIGNIFICANT ACCOUNTING POLICIES (Continued)

Financial Instruments

The Company uses interest rate collar agreements to manage interest costs and the risk associated with changing interest rates.

Income Taxes

PCA utilizes the liability method of accounting for income taxes whereby it recognizes deferred tax assets and liabilities for the future tax consequences of temporary differences between the tax basis of assets and liabilities and their reported amounts in the financial statements. Deferred tax assets will be reduced by a valuation allowance if, based upon management's estimates, it is more likely than not that a portion of the deferred tax assets will not be realized in a future period. The estimates utilized in the recognition of deferred tax assets are subject to revision in future periods based on new facts or circumstances.

Revenue Recognition

The Company recognizes revenue as title to the products is transferred to customers. Shipping and handling costs are included in cost of sales. Shipping and handling billings to a customer in a sales transaction are included in revenue.

Research and Development

Research and development costs are expensed as incurred. The amount charged to expense was \$6.7 million, \$5.5 million, and \$3.4 million for the years ended December 31, 2002, 2001 and 2000, respectively.

Freight Trades

PCA regularly trades containerboard with other manufacturers primarily to reduce shipping costs. The freight trade transactions are accounted for primarily as transactions in the inventory accounts; the impact on income is not material.

Segment Information

PCA is primarily engaged in one line of business: the manufacture and sale of packaging materials, boxes and containers for industrial and consumer markets. No single customer accounts for more than 10% of total revenues. PCA's manufacturing operations are located within the United States.

Comprehensive Income (Loss)

For the years ended December 31, 2002 and 2001, total comprehensive income was \$2.2 million more than net income due to derivative gains and foreign currency translation adjustments, and \$3.0 million less than net income due to derivative losses, respectively. There was no difference for the year ended December 31, 2000.

Packaging Corporation of America
Notes to Consolidated Financial Statements (Continued)
December 31, 2002

2. SUMMARY OF SIGNIFICANT ACCOUNTING POLICIES (Continued)

Derivative Instruments and Hedging Activities and Accounting Change

Effective January 1, 2001, the Company adopted Statement of Financial Accounting Standards ("SFAS") No. 133, "Accounting for Derivative Instruments and Hedging Activities," as amended by SFAS No. 137 and SFAS No. 138. The Statement requires the Company to recognize derivative instruments as either assets or liabilities in the balance sheet at fair value. It further provides criteria for derivative instruments to be designated as fair value, cash flow or foreign currency hedges and establishes respective accounting standards for reporting changes in the fair value of the derivative instruments. The gains or losses resulting from adjusting the derivative instruments to fair value are recorded in net income or accumulated other comprehensive income (loss) (OCI), as appropriate.

The Company recorded a transition adjustment upon adoption of SFAS No. 133 to recognize its derivative instruments at fair value and to recognize the effective and ineffective portions of the cash flow hedges. The effect of this transition adjustment was to decrease reported net income in the first quarter of 2001 by approximately \$0.5 million (\$0.8 million pre-tax). The Company also recorded a minimal transition adjustment in OCI and an increase in noncurrent liabilities of approximately \$0.8 million.

The Company uses derivative instruments to manage interest costs and the risk associated with changing interest rates. The Company's objectives for holding derivatives are to minimize the risks using the most effective methods to eliminate or reduce the impacts of these exposures. The Company has one interest rate collar agreement that protects against rising interest rates and simultaneously guarantees a minimum interest rate. As interest rates change, the differential paid or received is recognized in interest expense of the period. Interest rate collar agreements are accounted for as cash flow hedges.

Derivative losses included in OCI as of December 31, 2002, will be reclassified into earnings over the lives of the collar agreements, through June 30, 2003.

New Accounting Pronouncements

Effective January 1, 2002, the Company adopted SFAS No. 144, "Accounting for the Impairment or Disposal of Long-Lived Assets," which addresses financial accounting and reporting for the impairment or disposal of long-lived assets and supersedes SFAS No. 121, "Accounting for the Impairment of Long-Lived Assets and for Long-Lived Assets to be Disposed of," and the accounting and reporting provisions of APB Opinion No. 30, "Reporting the Results of Operations" for a disposal of a segment of a business. The adoption of SFAS No. 144 on January 1, 2002, did not have a material impact on the Company's consolidated financial position or results of operations.

In June 2001, the Financial Accounting Standards Board issued SFAS No. 143, "Accounting for Asset Retirement Obligations," which is effective for fiscal years beginning after June 15, 2002. The Statement requires legal obligations associated with the retirement of long-lived assets to be recognized at their fair value at the time that the obligations are incurred. Upon initial recognition of a liability, that cost should be capitalized as part of the related long-lived asset and allocated to expense over the useful life of the asset. The Company will adopt the new rules on asset retirement obligations on January 1, 2003. The adoption of the Statement is not expected to have a material impact on the Company's financial statements.

Packaging Corporation of America
Notes to Consolidated Financial Statements (Continued)
December 31, 2002

2. SUMMARY OF SIGNIFICANT ACCOUNTING POLICIES (Continued)

In June 2002, the FASB issued SFAS No. 146, "Accounting for Costs Associated with Exit or Disposal Activities," effective for exit or disposal activities initiated after December 31, 2002. This Statement addresses financial accounting and reporting for costs associated with exit or disposal activities and nullifies Emerging Issues Task Force ("EITF") Issue No. 94-3, "Liability Recognition for Certain Employee Termination Benefits and Other Costs to Exit an Activity (including Certain Costs Incurred in a Restructuring)." The adoption of SFAS No. 146 on January 1, 2003, is not expected to have a material impact on the Company's consolidated financial position or results of operations.

In November 2002, the FASB issued FASB Interpretation ("FIN") No. 45, "Guarantors Accounting and Disclosure Requirements for Guarantees, Including Indirect Guarantees of Indebtedness of Others." This Interpretation elaborates on the disclosures to be made by a guarantor in its interim and annual financial statements about its obligations under certain guarantees that it has issued. It also clarifies that a guarantor is required to recognize, at the inception of a guarantee, a liability for the fair value of the obligation undertaken in issuing the guarantee. This Interpretation does not prescribe a specific approach for subsequently measuring the guarantor's recognized liability over the term of the related guarantee. This Interpretation also incorporates, without change, the guidance in FIN No. 34, "Disclosure of Indirect Guarantees of Indebtedness of Others," which is being superseded. The initial recognition and initial measurement provisions are applicable on a prospective basis to guarantees issued or modified after December 31, 2002. The disclosure requirements are effective for financial statements of interim or annual periods ending after December 15, 2002. See Note 6, Debt, for disclosures regarding letters of credit.

In January 2003, the FASB issued FIN No. 46, "Consolidation of Variable Interest Entities," which addresses the financial reporting by companies involved with variable interest entities. A variable interest entity is a corporation, partnership, trust, or any other legal structure used for business purposes that either (a) does not have equity investors with voting rights or (b) has equity investors that do not provide sufficient financial resources for the entity to support its activities. FIN No. 46 requires a variable interest entity to be consolidated by a company if that company is subject to a majority of the risk of loss from the variable interest entity's activities or entitled to receive a majority of the entity's residual returns or both. Previously, a company generally included an entity in its consolidated financial statements only if it controlled the entity through voting interests. The consolidation requirements of FIN No. 46 apply immediately to variable interest entities created after January 31, 2003. Existing variable interest entities must be consolidated in the first fiscal year or interim period beginning after June 15, 2003. The Company is a 33 1/3% owner of Southern Timber Venture, LLC. The Company is currently evaluating FIN No. 46 to determine if Southern Timber Venture, LLC is a variable interest entity and if so which, if any, entity is the primary beneficiary for consolidation purposes.

Also in January 2003, the FASB issued SFAS No. 148, "Accounting for Stock-Based Compensation—Transition and Disclosure," which amends SFAS No. 123, "Accounting for Stock-Based Compensation." SFAS No. 148 provides alternative methods of transition for a voluntary change to the fair value based method of accounting for stock-based compensation. In addition, SFAS No. 148 amends the disclosure requirements of SFAS No. 123 to require more prominent and more frequent disclosures in financial statements about the effects of stock-based compensation. SFAS No. 148 is effective for fiscal years ending after December 15, 2002. See Note 2, Stock-Based Compensation, for disclosure information.

Packaging Corporation of America
Notes to Consolidated Financial Statements (Continued)
December 31, 2002

2. SUMMARY OF SIGNIFICANT ACCOUNTING POLICIES (Continued)

Stock-Based Compensation

PCA entered into management equity agreements in June 1999 with 125 of its management-level employees. These agreements provide for the grant of options to purchase up to an aggregate of 6,576,460 shares of PCA's common stock at \$4.55 per share, the same price per share at which PCA Holdings LLC purchased common stock in the Transactions. The agreement called for these options to vest ratably over a five-year period, or upon completion of an initial public offering, full vesting with contractual restrictions on transfer for a period of up to 18 months following completion of the offering. The options vested with the initial public offering in January 2000, and the restriction period ended August, 2001.

In October 1999, the Company adopted a long-term equity incentive plan, which provides for grants of stock options, stock appreciation rights (SARs), restricted stock and performance awards to directors, officers and employees of PCA, as well as others who engage in services for PCA. Option awards granted to officers and employees vest ratably over a four-year period, whereas option awards granted to directors vest immediately. Under the plan, which will terminate on June 1, 2009, up to 4,400,000 shares of common stock is available for issuance under the long-term equity incentive plan.

A summary of the Company's stock option activity, and related information for the years ended December 31, 2002, 2001 and 2000 follows:

| | <u>Options</u> | <u>Weighted-Average Exercise Price</u> |
|----------------------------------|------------------|--|
| Balance, January 1, 2000..... | 6,569,200 | \$ 4.55 |
| Granted | 1,059,700 | 11.92 |
| Exercised | (398,138) | 4.55 |
| Forfeited | <u>(26,560)</u> | <u>6.88</u> |
| Balance, December 31, 2000 | 7,204,202 | \$ 5.62 |
| Granted | 953,350 | 15.45 |
| Exercised | (1,662,475) | 4.59 |
| Forfeited | <u>(16,634)</u> | <u>11.18</u> |
| Balance, December 31, 2001 | 6,478,443 | \$ 7.31 |
| Granted | 871,000 | 19.55 |
| Exercised | (811,791) | 5.52 |
| Forfeited | <u>(63,550)</u> | <u>15.44</u> |
| Balance, December 31, 2002 | <u>6,474,102</u> | <u>\$ 9.10</u> |

Packaging Corporation of America
Notes to Consolidated Financial Statements (Continued)
December 31, 2002

2. SUMMARY OF SIGNIFICANT ACCOUNTING POLICIES (Continued)

The following table summarizes information for options outstanding and exercisable at December 31, 2002:

| Range of Exercise Price | Options Outstanding | | | | Options Exercisable | |
|-------------------------|---------------------|--------------|---------------------------------|---------------------------------|---------------------|---------------------------------|
| | Number | Year Granted | Weighted-Average Remaining Life | Weighted-Average Exercise Price | Number | Weighted-Average Exercise Price |
| \$4.55 | 3,790,015 | 1999 | 6.5 | \$ 4.55 | 3,790,015 | \$ 4.55 |
| \$10.44-\$12.00 | 925,275 | 2000 | 7.4 | 11.90 | 437,825 | 11.87 |
| \$13.38-\$15.50 | 902,912 | 2001 | 8.4 | 15.45 | 236,138 | 15.31 |
| \$19.55-\$19.59 | 855,900 | 2002 | 9.5 | 19.55 | 21,000 | 19.59 |
| | <u>6,474,102</u> | | | <u>\$ 9.10</u> | <u>4,484,978</u> | <u>\$ 5.90</u> |

As permitted by SFAS No. 123, "Accounting for Stock-Based Compensation" and amended by SFAS No. 148, "Accounting for Stock-Based Compensation—Transition and Disclosure," the Company has elected to account for its stock option plan under Accounting Principles Board ("APB") Opinion No. 25, "Accounting for Stock Issued to Employees," and adopt the disclosure only provisions of SFAS No. 123 and SFAS No. 148. Under APB No. 25, no compensation costs are recognized because the number of options is fixed and the option exercise price is equal to the fair market price of the common stock on the date of the grant. Under SFAS No. 123, stock options are valued at the grant date using the Black-Scholes valuation model and compensation costs are recognized ratably over the vesting period. Had stock options been accounted for using the fair value method as recommended in SFAS No. 123, compensation expense would have had the following pro forma effect on our net income and earnings per share for the years ended December 31, 2002, 2001 and 2000.

| | Year Ended December 31, | | |
|--|-------------------------|------------------|------------------|
| | 2002 | 2001 | 2000 |
| Net income available to common shareholders—as reported..... | \$48,179 | \$106,418 | \$143,264 |
| Less: Stock-based compensation expense determined using fair value method, net of tax..... | <u>(2,315)</u> | <u>(1,399)</u> | <u>(5,058)</u> |
| Net income—pro forma..... | <u>\$45,864</u> | <u>\$105,019</u> | <u>\$138,206</u> |
| Basic earnings per common share—as reported | \$ 0.46 | \$ 1.00 | \$ 1.37 |
| Diluted earnings per common share—as reported | \$ 0.45 | \$ 0.98 | \$ 1.33 |
| Basic earnings per common share—pro forma | \$ 0.44 | \$ 0.99 | \$ 1.32 |
| Diluted earnings per common share—pro forma | \$ 0.43 | \$ 0.97 | \$ 1.28 |

Packaging Corporation of America
Notes to Consolidated Financial Statements (Continued)
December 31, 2002

2. SUMMARY OF SIGNIFICANT ACCOUNTING POLICIES (Continued)

Black-Scholes option-pricing model assumptions and fair value for these options are shown in the following table:

| | Year of Grant | | |
|--|---------------|-------|-------|
| | 2002 | 2001 | 2000 |
| Actuarial assumptions | | | |
| Risk-free interest rate (%) | 4.85 | 5.67 | 6.68 |
| Expected life (years) | 5 | 5 | 5 |
| Volatility (%) | 33.80 | 37.50 | 39.00 |
| Dividend yield (%) | 0.00 | 0.00 | 0.00 |
| Weighted-average fair value (\$) | 7.45 | 6.52 | 5.36 |

The Black-Scholes option valuation model was developed for use in estimating the fair value of traded options which have no vesting restrictions and are fully transferable. In addition, option valuation models require the input of highly subjective assumptions including the expected stock price volatility. Because the Company's employee stock options have characteristics significantly different from those of traded options, and because changes in the subjective input assumptions can materially affect the fair value estimate, in management's opinion, the existing models do not necessarily provide a reliable single measure of the fair value of its employee stock options.

Reclassifications

Prior year's financial statements have been reclassified where appropriate to conform with current year presentation.

3. EARNINGS PER SHARE

The following table sets forth the computation of basic and diluted income per common share for the periods presented.

| | Year Ended December 31, | | |
|---|-------------------------|------------|------------|
| | 2002 | 2001 | 2000 |
| <i>(In thousands, except per share data)</i> | | | |
| Numerator: | | | |
| Net income available to common stockholders.. | \$ 48,179 | \$ 106,418 | \$ 143,264 |
| Denominator: | | | |
| Basic common shares outstanding | 105,053 | 106,277 | 104,890 |
| Effect of dilutive securities: | | | |
| Stock options | 2,155 | 2,524 | 2,397 |
| Non-vested stock | — | — | 231 |
| Dilutive common shares outstanding | 107,208 | 108,801 | 107,518 |
| Basic income per common share | \$ 0.46 | \$ 1.00 | \$ 1.37 |
| Diluted income per common share | \$ 0.45 | \$ 0.98 | \$ 1.33 |

Packaging Corporation of America
Notes to Consolidated Financial Statements (Continued)
December 31, 2002

4. ACCRUED LIABILITIES

The components of accrued liabilities are as follows:

| | December 31, | |
|--|---------------------|-----------------|
| | 2002 | 2001 |
| <i>(In thousands)</i> | | |
| Benefits | \$24,800 | \$24,832 |
| Medical insurance and workers' compensation..... | 16,573 | 16,138 |
| Vacation and holiday pay | 12,191 | 11,290 |
| Customer volume discounts and rebates | 9,805 | 10,841 |
| Payroll and payroll taxes | 7,778 | 6,233 |
| Other | 13,396 | 15,044 |
| Total..... | \$84,543 | \$84,378 |

5. EMPLOYEE BENEFIT PLANS AND OTHER POSTRETIREMENT BENEFITS

In connection with the Transactions, PCA and Pactiv entered into a human resources agreement which, among other items, granted PCA employees continued participation in the Pactiv pension plan for a period of up to five years following the closing of the Transactions for an agreed upon fee. For salaried employees, PCA will pay Pactiv \$4.0 million in the first and second years, \$6.0 million in the third year, \$8.0 million in the fourth year, and \$10.0 million in the fifth year following the closing date of the Transactions. For hourly employees, PCA will pay Pactiv \$1.2 million per year through December 31, 2000 and then \$4.5 million per year for two additional years. These amounts can be adjusted if there are material increases in the pension costs to Pactiv. The fees paid to Pactiv are expensed ratably throughout the year.

Effective January 1, 2003, PCA adopted a mirror-image pension plan for eligible hourly employees to succeed the Pactiv pension plan in which PCA had participated through December 31, 2002. The new PCA pension plan for hourly employees recognizes service earned under both the new PCA plan and the prior Pactiv plan. Benefits earned under the PCA plan are reduced by retirement benefits earned under the Pactiv plan through December 31, 2002. All assets and liabilities associated with benefits earned through December 31, 2002 for hourly employees and retirees of PCA were retained by the Pactiv plan. PCA intends to adopt its own retirement plan sometime in the future with respect to its salaried employees currently participating in the Pactiv pension plan.

The Company adopted a supplemental executive retirement plan in 2000 that provides supplemental pension benefits for certain executive officers of the Company. Benefits are based upon years of service and the highest three year average of compensation. The benefit obligation and pension costs were not significant.

PCA also provides certain medical benefits for retired salaried employees and certain medical and life insurance benefits for certain hourly employees. For salaried employees, the plan covers employees retiring from PCA on or after attaining age 58 who have had at least 10 years of full-time service with PCA after attaining age 48. For hourly employees, the postretirement medical coverage, where applicable, is available according to the eligibility provisions in effect at the employee's work location. Per the human resources agreement referred to above, Pactiv retained the liability relating to retiree medical and life

Packaging Corporation of America
Notes to Consolidated Financial Statements (Continued)
December 31, 2002

5. EMPLOYEE BENEFIT PLANS AND OTHER POSTRETIREMENT BENEFITS (Continued)

benefits for PCA employees who had retired on or before the closing date of the Transactions or who will be eligible to retire within two years of that date.

Financial data pertaining to the Company's postretirement benefit plans follow:

| | <u>2002</u> | <u>2001</u> | <u>2000</u> |
|--|------------------|------------------|------------------|
| <i>(In thousands)</i> | | | |
| Change in benefit obligation: | | | |
| Benefit obligation at beginning of period | \$ 7,703 | \$ 5,276 | \$ 4,044 |
| Service cost | 1,107 | 855 | 587 |
| Interest cost | 553 | 406 | 304 |
| Plan amendments | 105 | 132 | — |
| Actuarial loss (gain) | (95) | 1,038 | 341 |
| Participant contributions | 82 | — | — |
| Benefits paid | <u>(270)</u> | <u>(4)</u> | <u>—</u> |
| Benefit obligation at September 30 | <u>\$ 9,185</u> | <u>\$ 7,703</u> | <u>\$ 5,276</u> |
| Plan assets at fair value at September 30 | <u>\$ —</u> | <u>\$ —</u> | <u>\$ —</u> |
| Development of net amount recognized: | | | |
| Funded status at September 30 | \$(9,185) | \$(7,703) | \$(5,276) |
| Unrecognized cost: | | | |
| Actuarial loss (gain) | 889 | 938 | (479) |
| Prior service cost | 215 | 121 | — |
| Accrued benefit recognized at December 31 | <u>\$(8,081)</u> | <u>\$(6,644)</u> | <u>\$(5,755)</u> |
| Components of net periodic benefit cost: | | | |
| Service cost for benefits earned during the year | \$ 1,107 | \$ 855 | \$ 587 |
| Interest cost on accumulated postretirement benefit obligation | | | |
| | 553 | 406 | 304 |
| Net amortization of unrecognized amounts | <u>35</u> | <u>3</u> | <u>(29)</u> |
| Net periodic pension and postretirement benefit cost .. | <u>\$ 1,695</u> | <u>\$ 1,264</u> | <u>\$ 862</u> |

The accrued postretirement benefit cost has been recorded based upon certain actuarial estimates as of September 30, 2002, 2001 and 2000, as shown below. These estimates are subject to revision in future periods given new facts or circumstances.

| | <u>Postretirement Plan</u> | | |
|---------------------|----------------------------|-------------|-------------|
| | <u>2002</u> | <u>2001</u> | <u>2000</u> |
| Discount rate | 6.75% | 7.25% | 7.50% |

As of September 30, 2002, the Company assumed health care cost trend rates of 11.00% for 2003, 10.50% for 2004, 9.50% for 2005, 8.00% for 2006, 7.00% for 2007, 6.00% for 2008, and 5.00% for 2009 and thereafter. As of September 30, 2001, the Company assumed health care cost trend rates of 9.50% for 2002

Packaging Corporation of America
Notes to Consolidated Financial Statements (Continued)
December 31, 2002

5. EMPLOYEE BENEFIT PLANS AND OTHER POSTRETIREMENT BENEFITS (Continued)

and 2003, 8.00% for 2004, 7.00% for 2005, 6.00% for 2006, and 5.00% for 2007 and thereafter. As of September 30, 2000, the Company assumed a health care cost trend rate of 5.00%.

Increasing the assumed health care cost trend rate by one percentage point would increase the 2002 postretirement benefit obligation by approximately \$1.6 million and would increase the net postretirement benefit cost by approximately \$0.4 million.

On February 1, 2000, the Company adopted two defined contribution benefit plans that cover all full-time salaried employees and certain hourly employees at several of the Company's facilities. Employees can make voluntary contributions in accordance with the provisions of their respective plan. The Company expensed \$6.9 million, \$6.7 million and \$6.1 million for employer contributions during the years ended December 31, 2002, 2001 and 2000, respectively.

6. DEBT

A summary of debt is set forth in the following table:

| | <u>December 31,</u> | |
|---|---------------------|------------------|
| | <u>2002</u> | <u>2001</u> |
| <i>(In thousands)</i> | | |
| Senior credit facility— | | |
| Term Loan A, effective interest rate of 3.15% and 3.16% at December 31, 2002 and 2001, respectively, due in varying quarterly installments through June 30, 2006 | \$ 54,618 | \$ 82,272 |
| Term Loan B, effective interest rate of 3.40% and 3.91% as of December 31, 2002 and 2001, respectively, due in varying quarterly installments through June 30, 2007 | 24,382 | 36,728 |
| Receivables credit facility, effective interest rate of 1.78% and 2.33% as of December 31, 2002 and 2001, respectively, due November 29, 2003 | 113,000 | 126,000 |
| Senior subordinated notes, interest at 9.625% payable semi-annually, due April 1, 2009, callable beginning April 1, 2004 at 104.8125% | 550,000 | 550,000 |
| Other | 213 | 217 |
| Total | <u>742,213</u> | <u>795,217</u> |
| Less: Current portion | <u>113,094</u> | <u>54</u> |
| Total long-term debt | <u>\$629,119</u> | <u>\$795,163</u> |

Packaging Corporation of America
Notes to Consolidated Financial Statements (Continued)
December 31, 2002

6. DEBT (Continued)

Additional information regarding PCA's variable rate debt before the effects of the interest rate collars described below, is shown below:

| | <u>Weighted-Average Reference Interest Rate</u> | | <u>Applicable Margin</u> | |
|-----------------------------------|---|-------------|--------------------------|-------------|
| | <u>December 31,</u> | | <u>December 31,</u> | |
| | <u>2002</u> | <u>2001</u> | <u>2002</u> | <u>2001</u> |
| LIBOR based debt: | | | | |
| Senior credit facility | | | | |
| Term Loan A | 1.40% | 1.91% | 1.75% | 1.25% |
| Term Loan B | 1.40% | 1.91% | 2.00% | 2.00% |
| Commercial paper based debt: | | | | |
| Receivables credit facility | 1.40% | 1.92% | 0.38% | 0.38% |

Since April 12, 1999, PCA has made debt prepayments totaling approximately \$1,027.0 million using excess cash and proceeds from the sale of certain timberlands to permanently reduce its borrowings under the term loans. As a result of these prepayments, PCA recorded a charge of \$1.0 million (\$0.6 million after tax) and \$18.4 million (\$11.1 million after tax), respectively, as an early extinguishment of debt for the years ended December 31, 2001 and 2000. No quarterly installments will be required under any of the term loans until September 30, 2004.

As of December 31, 2002, annual principal payments for debt during the next five years are: \$113.1 million (2003), \$9.7 million (2004), \$36.1 million (2005), \$9.6 million (2006), \$23.7 million (2007), and \$550.0 million (2008 and thereafter).

Interest payments in connection with the Company's debt obligations for the years ended December 31, 2002, 2001 and 2000 amounted to \$66.0 million, \$73.6 million, and \$112.6 million, respectively.

On June 29, 2000, the Company completed the refinancing of its senior credit facility. The new refinancing lowered the Company's margins over LIBOR on Term Loans A and B and eliminated Term Loan C, resulting in an average margin reduction of about 100 basis points. The Company incurred approximately \$3.6 million in bank syndication and arrangement fees, which were rolled into the current debt structure.

On November 29, 2000, the Company established an on-balance sheet securitization program for its trade accounts receivable. To effectuate this program, the Company formed a wholly owned limited purpose subsidiary, Packaging Credit Company, LLC ("PCC"), which in turn formed a wholly owned, bankruptcy-remote, special-purpose subsidiary, Packaging Receivables Company, LLC ("PRC"), for the purpose of acquiring receivables from PCC. Both of these entities are included in the consolidated financial statements of the Company. Under this program, PCC purchases on an ongoing basis substantially all of the receivables of the Company and sells such receivables to PRC. PRC and lenders established a \$150.0 million receivables-backed revolving credit facility ("Receivables Credit Facility") through which PRC obtains funds to purchase receivables from PCC. The receivables purchased by PRC are and will be solely the property of PRC. In the event of liquidation of PRC, the creditors of PRC would

Packaging Corporation of America
Notes to Consolidated Financial Statements (Continued)
December 31, 2002

6. DEBT (Continued)

be entitled to satisfy their claims from PRC's assets prior to any distribution to PCC or the Company. Credit available under the receivables credit facility is on a borrowing-base formula. As a result, the full amount of the facility may not be available at all times. At December 31, 2002, \$113.0 million was outstanding and \$37.0 million was available for additional borrowing under the receivables credit facility. The highest outstanding principal balance under the receivables credit facility during fiscal 2002 was \$126.0 million.

The senior revolving credit facility is (1) jointly and severally guaranteed by each of PCA's existing domestic subsidiaries (excluding Packaging Receivables Company, LLC) and (2) secured by a first priority lien covering substantially all of the owned timberland, mills, plants and other facilities and substantially all tangible and intangible personal property of PCA and its domestic subsidiaries and by a pledge of all of the capital stock of PCA's domestic subsidiaries. In addition, the senior credit facility will also be secured by a pledge of 65% of the capital stock of any first tier foreign subsidiaries that PCA may acquire or form in the future. PCA's future domestic subsidiaries will guarantee the senior credit facility and secure that guarantee with certain of their real property and substantially all of their tangible and intangible personal property.

PCA's various debt agreements contain covenants that restrict the ability of PCA and its subsidiaries to incur additional indebtedness, pay dividends or make certain other restricted payments, consummate certain asset sales, incur liens, enter into certain transactions with affiliates, or merge or consolidate with any other person or sell or dispose of all or substantially all of the assets of the Company. They also require PCA to comply with certain financial covenants, including the ratio of earnings before interest, taxes, depreciation, and amortization (EBITDA) to cash interest expense, the ratio of debt to EBITDA, and minimum net worth levels. A failure to comply with the restrictions contained in the senior credit facility could lead to an event of default, which could result in an acceleration of such indebtedness. Such an acceleration would also constitute an event of default under the notes indenture and the receivables credit facility. At December 31, 2002, the Company was in compliance with all of its covenants.

The Company maintains interest rate collar agreements for its variable rate debt. The interest rate collar agreements protect against rising interest rates while simultaneously guaranteeing minimum interest rates. The notional amount of these collars is \$78.8 million and \$175.0 million at December 31, 2002 and 2001, respectively. Approximately 41.0% of PCA's variable rate debt are capped at December 31, 2002. The weighted average floor of the interest rate collar agreements is 4.95% and the weighted average ceiling is 6.75%. On January 14, 2000, PCA terminated \$110.0 million of interest rate collar agreements and received \$1.9 million. The senior credit facility provides PCA with the right to lock-in LIBOR interest rates for any amount of term loans for one, two, three, or six-month periods. With the approval of the lenders, PCA can lock-in LIBOR interest rates for either a two-week or twelve-month period. The receivables credit facility also provides PCA with the right to lock-in commercial paper interest rates for a one, two, or three-month period.

Packaging Corporation of America
Notes to Consolidated Financial Statements (Continued)
December 31, 2002

6. DEBT (Continued)

A summary of the Company's drawings under credit facilities as of December 31, 2002 follows:

| | <u>Term</u> | <u>Commitments</u> | <u>Utilized</u> | <u>Available</u> |
|--|-------------|--------------------|------------------|------------------|
| <i>(In thousands)</i> | | | | |
| Receivables credit facility | 2003 | \$150,000 | \$113,000 | \$ 37,000 |
| Senior revolving credit facility | 2006 | <u>150,000</u> | — | <u>150,000</u> |
| | | <u>\$300,000</u> | <u>\$113,000</u> | <u>\$187,000</u> |

PCA is required to pay commitment fees on the unused portions of the credit facilities. In December of 2000, PCA reduced the availability under the senior revolving credit facility from \$250.0 million to \$150.0 million.

A summary of the Company's letters of credit is set forth in the following table:

| | <u>December 31,</u> | |
|-----------------------------------|---------------------|-----------------|
| | <u>2002</u> | <u>2001</u> |
| <i>(In thousands)</i> | | |
| Workers' compensation | \$11,775 | \$ 8,500 |
| Environmental | 1,431 | 9,079 |
| Management equity loans | 2,065 | 4,600 |
| Equipment leases | <u>1,329</u> | <u>1,643</u> |
| Total | <u>\$16,600</u> | <u>\$23,822</u> |

The letter of credit related to the management equity loans guaranteed bank financing to enable some members of PCA's management to purchase equity under the management equity agreements discussed in Note 9, Shareholders' Equity. The letter of credit expires in June of 2004.

The remaining letters of credit guarantee payment by PCA of various environmental obligations, including landfills and solid waste programs, workers' compensation, and equipment leases.

7. FINANCIAL INSTRUMENTS

The carrying and estimated fair values of PCA's financial instruments at December 31, 2002 and 2001 were as follows:

| | <u>2002</u> | | <u>2001</u> | |
|--|-----------------|-------------------|-----------------|-------------------|
| | <u>Carrying</u> | <u>Fair Value</u> | <u>Carrying</u> | <u>Fair Value</u> |
| <i>(In thousands)</i> | <u>Amount</u> | <u>Fair Value</u> | <u>Amount</u> | <u>Fair Value</u> |
| Short-term assets | \$307,021 | \$307,021 | \$252,640 | \$252,640 |
| Short-term liabilities | \$(85,807) | (85,807) | (93,873) | (93,873) |
| Long-term debt— | | | | |
| Senior credit facility | (79,000) | (79,000) | (119,000) | (119,000) |
| 9.625% senior subordinated notes | (550,000) | (594,000) | (550,000) | (596,750) |
| Receivables credit facility | (113,000) | (113,000) | (126,000) | (126,000) |
| Other | (213) | (213) | (217) | (217) |
| Interest rate collars | (1,422) | (1,422) | (5,228) | (5,228) |

Packaging Corporation of America
Notes to Consolidated Financial Statements (Continued)
December 31, 2002

7. FINANCIAL INSTRUMENTS (Continued)

Short-Term Assets and Liabilities

The fair value of cash and cash equivalents, accounts receivable, notes receivable and accounts payable approximate their carrying amounts due to the short-term nature of these financial instruments.

Long-Term Debt

The fair value of the senior credit facility and the receivables credit facility approximates their carrying amount due to the variable interest-rate feature of the instruments. The fair value of the senior subordinated notes is based on quoted market prices. The fair values of the remaining debt were considered to be the same as or were not determined to be materially different from the carrying amounts.

Interest Rate Collars

The fair values of the interest rate collars are the amounts at which they could be settled and are estimated by obtaining quotes from banks.

8. MANDATORY REDEEMABLE PREFERRED STOCK

On April 12, 1999, PCA issued 1,000,000 shares of 12.375% senior exchangeable preferred stock, liquidation preference of \$100 per share. Holders of the preferred shares were entitled to receive cumulative dividends paid in cash or in kind at a rate of 12.375% which were paid semi-annually. If PCA failed to pay dividends, holders of the preferred stock were entitled to elect two additional members to PCA's Board of Directors. Holders of the preferred stock had no voting rights. The preferred stock ranked senior to the common stock. 3,000,000 shares were authorized, and 1,058,094 shares were issued and outstanding as of December 31, 1999. PCA incurred \$3.5 million of issuance costs, which were being amortized through 2010 at which time the preferred stock was required to be redeemed.

PCA used substantially all of the net proceeds from its initial public offering to redeem all outstanding shares of its 12.375% senior exchangeable preferred stock due 2010 (1,058,094 shares as of March 3, 2000) at a redemption price of 112.375% of its liquidation preference, plus accrued and unpaid dividends through March 3, 2000, the date of redemption. The total paid to redeem the senior exchangeable preferred stock was \$124.4 million, which included \$5.5 million of accrued and unpaid dividends.

9. SHAREHOLDERS' EQUITY

In June 1999, PCA entered into management equity agreements with 125 of its management-level employees. Under these agreements, PCA Holdings LLC and Pactiv Corporation sold 3,132,800 shares of common stock to 113 of these employees at \$4.55 per share. The stock purchased under the management equity agreements was subject to vesting. As of August 2001, the stock was fully vested. The management equity agreements also provide for the grant of options (see Note 2).

On January 28, 2000, PCA became a publicly traded company through the initial public offering of its common stock in which Pactiv Corporation sold 35,000,000 of its 41,160,240 shares of common stock in PCA, and PCA issued an additional 11,250,000 shares. The net proceeds to PCA were approximately \$126.4 million, after deducting underwriting discounts and offering expenses at an initial public offering

Packaging Corporation of America
Notes to Consolidated Financial Statements (Continued)
December 31, 2002

9. SHAREHOLDERS' EQUITY (Continued)

price of \$12.00 per share. PCA utilized these proceeds to redeem its senior exchangeable preferred stock (see Note 8).

On May 16, 2001, the Company announced a \$100.0 million common stock repurchase program. PCA currently expects to continue to repurchase shares from time to time. Through December 31, 2002, the Company repurchased 4,210,900 shares of common stock for approximately \$71.3 million. Of these shares, 18,800 were held in treasury at December 31, 2002 and were subsequently retired in February 2003. The remaining shares were retired prior to December 31, 2002.

The Company's share repurchases were as follows:

| <u>Time Period</u> | <u>Number of Shares</u> | <u>Average Price Per Share</u> | <u>Total Cost</u> |
|-----------------------------|-----------------------------|------------------------------------|-----------------------|
| | | | <i>(In thousands)</i> |
| First Quarter | — | \$ — | \$ — |
| Second Quarter | 222,900 | 15.55 | 3,465 |
| Third Quarter | 1,589,800 | 16.75 | 26,634 |
| Fourth Quarter | 510,500 | 16.12 | 8,229 |
| Total 2001 | <u>2,323,200</u> | <u>\$16.50</u> | <u>\$38,328</u> |
| First Quarter | 385,100 | \$17.54 | \$ 6,754 |
| Second Quarter | 120,100 | 19.61 | 2,355 |
| Third Quarter | 1,078,700 | 17.37 | 18,735 |
| Fourth Quarter | 303,800 | 16.93 | 5,143 |
| Total 2002 | <u>1,887,700</u> | <u>\$17.47</u> | <u>\$32,987</u> |
| Total Program To Date . . . | <u>4,210,900</u> | <u>\$16.94</u> | <u>\$71,315</u> |

10. COMMITMENTS AND CONTINGENCIES

Capital Commitments

The Company had authorized capital expenditures of approximately \$31.3 million and \$44.5 million as of December 31, 2002 and 2001, respectively, in connection with the expansion and replacement of existing facilities and equipment.

Packaging Corporation of America
Notes to Consolidated Financial Statements (Continued)
December 31, 2002

10. COMMITMENTS AND CONTINGENCIES (Continued)

Operating Leases

The Company holds certain of its facilities, equipment, and other assets under long-term leases. The minimum lease payments under non-cancelable operating leases with lease terms in excess of one year are as follows:

| | |
|-----------------------|-----------------|
| <i>(In thousands)</i> | |
| 2003..... | \$19,589 |
| 2004..... | 18,180 |
| 2005..... | 13,027 |
| 2006..... | 7,969 |
| 2007..... | 4,082 |
| Thereafter..... | <u>31,562</u> |
| Total..... | <u>\$94,409</u> |

Commitments under capital leases were not significant to the accompanying financial statements. Total lease expense for the years ended December 31, 2002, 2001 and 2000 was \$27.0 million, \$26.7 million and \$24.7 million, respectively. These costs are included primarily in cost of goods sold.

Purchase Commitments

The Company has entered into various minimum purchase agreements to buy energy over periods ranging from one to two years at fixed prices. Total purchase commitments over the next two years are as follows:

| | |
|-----------------------|-----------------|
| <i>(In thousands)</i> | |
| 2003..... | \$15,639 |
| 2004..... | <u>4,076</u> |
| Total..... | <u>\$19,715</u> |

These purchase agreements are not marked to market. The Company purchased approximately \$24.4 million during the year ended December 31, 2002, \$18.8 million during the year ended December 31, 2001, and \$9.3 million during the year ended December 31, 2000 under these purchase agreements.

Litigation

On May 14, 1999, PCA was named as a defendant in a Consolidated Class Action Complaint which alleged a civil violation of Section 1 of the Sherman Act. The suit, captioned *Winoff Industries, Inc. v. Stone Container Corporation*, MDL No. 1261 (E.D. Pa.), names the Company as a defendant based solely on the allegation that PCA is successor to the interests of Tenneco Packaging Inc. and Tenneco Inc., both of which were also named as defendants in the suit, along with nine other linerboard manufacturers. The complaint alleges that the defendants, during the period October 1, 1993 through November 30, 1995, conspired to limit the supply of linerboard, and that the purpose and effect of the alleged conspiracy was artificially to increase prices of corrugated containers. The plaintiffs have moved to certify a class of all persons in the United States who purchased corrugated containers directly from any defendant during the

Packaging Corporation of America
Notes to Consolidated Financial Statements (Continued)
December 31, 2002

10. COMMITMENTS AND CONTINGENCIES (Continued)

above period, and seek treble damages and attorneys' fees on behalf of the purported class. The Court granted plaintiffs' motion on September 4, 2001, but modified the proposed class to exclude those purchasers who purchased corrugated containers pursuant to contracts in which the price was "not tied to the price of linerboard". The Court's class certification decision was affirmed by the Court of Appeals for the Third Circuit on September 5, 2002. The case is currently set for trial in April 2004. PCA believes that the plaintiffs' allegations have no merit and intends to defend against the suit vigorously. PCA does not believe that the outcome of this litigation should have a material adverse effect on its financial position, results of operations, or cash flow.

PCA is also party to various legal actions arising in the ordinary course of business. These legal actions cover a broad variety of claims spanning our entire business. PCA believes that the resolution of these legal actions will not, individually or in the aggregate, have a material adverse effect on its financial position or results of operations.

Environmental Liabilities

The estimated landfill closure and postclosure maintenance costs expected to be incurred upon and subsequent to the closing of existing operating landfill areas are accrued based on the landfill capacity used to date. Amounts are estimates using current technologies for closure and monitoring and are not discounted.

The potential costs for various environmental matters are uncertain due to such factors as the unknown magnitude of possible cleanup costs, the complexity and evolving nature of governmental laws and regulations and their interpretations, and the timing, varying costs and effectiveness of alternative cleanup technologies. From January 1994 through December 2002, remediation costs at our mills and converting plants totaled about \$2.9 million. As of December 31, 2002, we maintained an environmental reserve of \$3.7 million, which includes funds relating to onsite landfills and surface impoundments as well as on-going and anticipated remedial projects. Total capital costs for environmental matters, including Cluster Rule compliance, were \$4.3 million for 2002. Liabilities recorded by the Company for environmental contingencies are estimates of the probable costs based upon available information and assumptions. Because of these uncertainties, however, PCA's estimates may change. PCA believes that any additional costs identified as further information becomes available would not have a material effect on its financial statements.

In the April 12, 1999 transactions, Pactiv agreed to retain all liability for all former facilities and all sites associated with pre-closing offsite waste disposal. Pactiv also retained environmental liability for a closed landfill located near the Filer City mill.

Packaging Corporation of America
Notes to Consolidated Financial Statements (Continued)
December 31, 2002

11. INCOME TAXES

Following is an analysis of the components of consolidated income tax expense (benefit):

| <i>(In thousands)</i> | <u>2002</u> | <u>2001</u> | <u>2000</u> |
|---|-----------------|-----------------|------------------|
| Current— | | | |
| U.S..... | \$ (7,526) | \$ 17,816 | \$ 30,273 |
| State and local..... | 1,298 | 3,742 | 4,074 |
| Total current provision for taxes..... | <u>(6,228)</u> | <u>21,558</u> | <u>34,347</u> |
| Deferred— | | | |
| U.S..... | 32,159 | 40,793 | 70,948 |
| State and local..... | 3,504 | 5,561 | 8,895 |
| Total deferred provision for taxes..... | <u>35,663</u> | <u>46,354</u> | <u>79,843</u> |
| Total provision for taxes..... | <u>\$29,435</u> | <u>\$67,912</u> | <u>\$114,190</u> |

The effective tax rate varies from the U.S. Federal statutory tax rate principally due to the following:

| <i>(In thousands)</i> | <u>2002</u> | <u>2001</u> | <u>2000</u> |
|---|-----------------|-----------------|------------------|
| Provision computed at U.S. Federal statutory rate of 35%..... | \$27,165 | \$61,402 | \$100,503 |
| State and local taxes, net of federal benefit..... | 3,221 | 7,339 | 12,963 |
| Other..... | (951) | (829) | 724 |
| Total..... | <u>\$29,435</u> | <u>\$67,912</u> | <u>\$114,190</u> |

The components of the deferred tax assets (liabilities) were as follows:

| <i>(In thousands)</i> | <u>December 31,</u> | |
|--|---------------------|--------------------|
| | <u>2002</u> | <u>2001</u> |
| Current deferred taxes— | | |
| Accrued liabilities..... | \$ 2,444 | \$ 1,980 |
| Employee benefits and compensation..... | 8,467 | 7,929 |
| Reserve for doubtful accounts..... | 3,056 | 1,365 |
| Inventory..... | 3,669 | 1,064 |
| Pensions and postretirement benefits..... | 1,748 | 1,808 |
| Derivatives..... | — | (800) |
| Total current deferred taxes..... | <u>\$ 19,384</u> | <u>\$ 13,346</u> |
| Noncurrent deferred taxes— | | |
| Pension and postretirement benefits..... | \$ 2,053 | \$ 3,042 |
| Excess of financial reporting over tax basis in plant and equipment..... | (254,659) | (209,170) |
| Accrued liabilities..... | 2,013 | (3,666) |
| Asset for alternative minimum tax credits..... | 8,664 | 12,495 |
| Derivatives..... | 557 | 2,847 |
| Total noncurrent deferred taxes..... | <u>\$(241,372)</u> | <u>\$(194,452)</u> |

Packaging Corporation of America
Notes to Consolidated Financial Statements (Continued)
December 31, 2002

11. INCOME TAXES (Continued)

Cash payments for income taxes were \$1.2 million, \$23.4 million and \$23.7 million for the years ended December 31, 2002, 2001 and 2000, respectively. As of December 31, 2002 and 2001, the Company had available for income tax purposes approximately \$8.7 million and \$12.5 million, respectively, in alternative minimum tax credits which may be used to offset future taxable income.

12. RELATED PARTY TRANSACTIONS

PCA owns a 33 1/3% interest in Southern Timber Venture, LLC ("STV"). At December 31, 2002, PCA had not guaranteed the debt of STV and has no future funding requirements. The Company's investment recorded on its balance sheet at December 31, 2002 is zero.

PCA purchases pulpwood from STV in accordance with the terms of a fiber supply agreement between the two companies which expires December 31, 2017. The price of pulpwood in this agreement is based upon the fair market value of pulpwood and will be adjusted annually for any changes in market value beginning January 2003. PCA purchased \$19.8 million, \$19.7 million and \$1.7 million of pulpwood for its Counce, Tennessee and Valdosta, Georgia mills from STV during the years ended December 31, 2002, 2001 and from November 16, 2000, through December 31, 2000, respectively.

As Pactiv Corporation sold its remaining interest in PCA during the first half of 2001, it is no longer considered a related party. PCA's sales to Pactiv Corporation, which includes both containerboard and corrugated products, are included in the accompanying consolidated financial statements. The net sales to Pactiv Corporation for the years ended December 31, 2001 and 2000 were \$92.9 million and \$100.5 million, respectively. The accounts receivable relating to these sales as of December 31, 2001 and 2000 were \$9.3 million and \$13.3 million, respectively.

PCA and Pactiv entered into a facility use agreement which provides for PCA's use of a portion of Pactiv's headquarters located in Lake Forest, Illinois and certain building and business services through January 2005. PCA paid Pactiv \$2.0 million, \$1.8 million and \$2.4 million for the years ended December 31, 2002, 2001 and 2000, respectively.

13. RESTRUCTURING AND OTHER CHARGES

As part of the April 12, 1999 Transactions, the Company assumed accruals related to a previously recorded restructuring charge set forth below. This charge was recorded prior to the Transactions following approval by Tenneco's Board of Directors of a comprehensive restructuring plan for all of Tenneco's operations, including those of the Company. In connection with this restructuring plan, four corrugated facilities were closed and 109 positions were eliminated.

The following table reflects the components of this assumed accrual:

| <i>(In thousands)</i> | Balance April 12, 1999 | Activity | Balance Dec. 31, 1999 | Activity | Balance Dec. 31, 2000 | Activity | Balance Dec. 31, 2001 | Activity | Balance Dec. 31, 2002 |
|-----------------------------|------------------------------|----------------|-----------------------------|----------------|-----------------------------|--------------|-----------------------------|-------------|-----------------------------|
| Severance | \$ 1,087 | \$ 819 | \$ 268 | \$ 268 | \$ — | \$ — | \$ — | \$ — | \$ — |
| Facility exit costs | 1,920 | 278 | 1,642 | 1,489 | 153 | 138 | 15 | 15 | — |
| Total accrual | <u>\$ 3,007</u> | <u>\$1,097</u> | <u>\$1,910</u> | <u>\$1,757</u> | <u>\$153</u> | <u>\$138</u> | <u>\$15</u> | <u>\$15</u> | <u>\$ —</u> |

Packaging Corporation of America
Notes to Consolidated Financial Statements (Continued)
December 31, 2002

13. RESTRUCTURING AND OTHER CHARGES (Continued)

The fixed assets at the closed facilities were written down to their estimated fair value. No significant cash proceeds were received from the ultimate disposal of these assets.

14. SALE OF TIMBERLANDS

On November 16, 2000, PCA completed the sale of approximately 385,000 acres of timberland to Southern Timber Venture, LLC. The Company received \$247.9 million in cash and a 33 ¹/₃% equity ownership interest in Southern Timber Venture, LLC. PCA recorded a pre-tax gain of \$60.4 million, and a portion of the gain was not recognized as a result of PCA's continuing ownership interest.

In March 2002, PCA received a \$2.3 million dividend (\$1.4 million after-tax) from Southern Timber Venture, LLC.

15. ACQUISITIONS

On May 25, 2001, PCA International, Inc. a wholly owned subsidiary of PCA, was formed to acquire the assets of Sunbelt Packaging Services, Inc. for approximately \$4.8 million. The transaction was completed on June 1, 2001. The purchase method of accounting was used to account for the acquisition. Sales and total assets of the acquisition were not material.

Packaging Corporation of America
Notes to Consolidated Financial Statements (Continued)
December 31, 2002

16. SUMMARIZED COMBINED FINANCIAL INFORMATION ABOUT GUARANTOR SUBSIDIARIES

The following is summarized aggregated financial information for Packaging Credit Company, LLC, Dixie Container Corporation, PCA International, Inc., PCA International Services, LLC and PCA Hydro, Inc., each of which was a wholly-owned subsidiary of PCA and included in the Company's consolidated financial statements. Each of these subsidiaries fully, unconditionally, jointly and severally guaranteed \$550.0 million in senior subordinated notes issued by PCA in connection with the Transactions. Separate financial statements of the guarantor subsidiaries are not presented because, in the opinion of management, such financial statements are not material to investors. Financial information for Packaging Receivables Company, LLC, PCAI de Mexico S. de R.L. de C.V., and PCAI Services de Mexico S. de R.L. de C.V. are reflected as non-guarantor subsidiaries.

| <i>(In thousands)</i> | PCA | Guarantor Subs | Non-Guarantor Subs | Eliminations | Total |
|-------------------------------------|-------------------|-------------------|--------------------|---------------------|-------------------|
| December 31, 2002 | | | | | |
| Current assets | \$ 337,266 | \$ 102,784 | \$ 186,029 | \$ (116,525) | \$ 509,554 |
| Non-current assets | 1,615,361 | 157,527 | 23 | (299,914) | 1,472,997 |
| Total assets | 1,952,627 | 260,311 | 186,052 | (416,439) | 1,982,551 |
| Current liabilities | 319,186 | 3,607 | 113,183 | (139,170) | 296,806 |
| Non-current liabilities | 889,483 | 387 | — | — | 889,870 |
| Total liabilities | 1,208,669 | 3,994 | 113,183 | (139,170) | 1,186,676 |
| Net assets | <u>\$ 743,958</u> | <u>\$ 256,317</u> | <u>\$ 72,869</u> | <u>\$ (277,269)</u> | <u>\$ 795,875</u> |
| December 31, 2001 | | | | | |
| Current assets | \$ 260,573 | \$ 62,264 | \$ 204,370 | \$ (78,990) | \$ 448,217 |
| Non-current assets | 1,649,244 | 114,932 | — | (240,613) | 1,523,563 |
| Total assets | 1,909,817 | 177,196 | 204,370 | (319,603) | 1,971,780 |
| Current liabilities | 288,009 | 2,651 | 100 | (98,865) | 191,895 |
| Non-current liabilities | 883,799 | 252 | 126,000 | — | 1,010,051 |
| Total liabilities | 1,171,808 | 2,903 | 126,100 | (98,865) | 1,201,946 |
| Net assets | <u>\$ 738,009</u> | <u>\$ 174,293</u> | <u>\$ 78,270</u> | <u>\$ (220,738)</u> | <u>\$ 769,834</u> |
| Year ended December 31, 2002 | | | | | |
| Net sales | \$1,727,884 | \$ 7,974 | \$ — | \$ — | \$1,735,858 |
| Pre-tax profit | 44,481 | 80,694 | 141 | (47,702) | 77,614 |
| Net income | 28,087 | 48,946 | 141 | (28,995) | 48,179 |
| Year ended December 31, 2001 | | | | | |
| Net sales | \$1,784,765 | \$ 5,191 | \$ — | \$ — | \$1,789,956 |
| Pre-tax profit | 131,731 | 76,620 | 19,865 | (52,782) | 175,434 |
| Net income | 79,012 | 41,167 | 19,865 | (33,625) | 106,418 |
| Year ended December 31, 2000 | | | | | |
| Net sales | \$1,921,868 | \$ — | \$ — | \$ — | \$1,921,868 |
| Pre-tax profit | 280,075 | 3,907 | 1,630 | 1,539 | 287,151 |
| Net income | 157,507 | 3,884 | 1,630 | (1,120) | 161,901 |

Packaging Corporation of America
Notes to Consolidated Financial Statements (Continued)
December 31, 2002

17. QUARTERLY FINANCIAL DATA (UNAUDITED)

| <i>(In thousands, except per share amounts)</i> | Fiscal Quarter | | | | |
|--|----------------|-----------|-----------|-----------|-------------|
| | First | Second | Third | Fourth | Total |
| 2002: | | | | | |
| Net sales | \$414,706 | \$447,390 | \$455,570 | \$418,192 | \$1,735,858 |
| Income before interest and taxes | 33,170 | 36,560 | 40,035 | 35,515 | 145,280 |
| Net income | 9,626 | 11,595 | 14,598 | 12,360 | 48,179 |
| Basic earnings per share | 0.09 | 0.11 | 0.14 | 0.12 | 0.46 |
| Diluted earnings per share | 0.09 | 0.11 | 0.14 | 0.12 | 0.45 |
| Stock price—high | 19.88 | 21.10 | 19.85 | 18.60 | 21.10 |
| Stock price—low | 16.45 | 18.81 | 16.27 | 16.20 | 16.20 |
| 2001: | | | | | |
| Net sales | \$454,666 | \$466,964 | \$455,214 | \$413,112 | \$1,789,956 |
| Income before interest, taxes, cumulative effect of accounting change and extraordinary item | 65,960 | 69,554 | 65,364 | 48,577 | 249,455 |
| Net income | 27,619 | 31,259 | 29,154 | 18,386 | 106,418 |
| Basic earnings per share | 0.26 | 0.29 | 0.27 | 0.17 | 1.00 |
| Diluted earnings per share | 0.25 | 0.29 | 0.27 | 0.17 | 0.98 |
| Stock price—high | 16.50 | 16.98 | 20.70 | 18.64 | 20.70 |
| Stock price—low | 12.65 | 12.85 | 14.75 | 14.23 | 12.65 |
| 2000: | | | | | |
| Net sales | \$475,890 | \$492,372 | \$487,676 | \$465,930 | \$1,921,868 |
| Income before interest, taxes and extraordinary item | 72,741 | 88,537 | 96,568 | 146,988 | 404,834 |
| Net income | 25,246 | 33,278 | 40,009 | 63,368 | 161,901 |
| Net income available to common shareholders | 6,609 | 33,278 | 40,009 | 63,368 | 143,264 |
| Basic earnings per share | 0.07 | 0.31 | 0.38 | 0.60 | 1.37 |
| Diluted earnings per share | 0.06 | 0.31 | 0.37 | 0.58 | 1.33 |
| Stock price—high | 12.19 | 12.75 | 13.19 | 16.81 | 16.81 |
| Stock price—low | 9.25 | 9.88 | 10.25 | 10.88 | 9.25 |

Note: The sum of the quarters may not equal the total of the respective year's earnings per share on either a basic or diluted basis due to changes in the weighted average shares outstanding throughout the year.

(This page has been left blank intentionally.)

Operations and Locations

Manufacturing of Wire

Counce, TN
Valdosta, GA



Filer City, MI
Tomahawk, WI

Terminal Locations

Ackerman, MS
Fulton, MS
Selmer, TN

Marketing Offices

Jackson, TN
Nashville, TN



Manufacturing of Wire

Fishersville, VA
Liverpool, NY
Manheim, PA
Orlando, FL
Thomasville, GA
Vineland, NJ
West Springfield, MA
Winchester, MA

Manufacturing Systems and Services

High Point, NC

Manufacturing of Wire, Cable and Products

Honea Path, SC

Manufacturing Products and Manufacturing Facilities

Akron, OH
Allentown, PA
Arlington, TX
Ashland, OH
Atlanta, GA
Baltimore, MD
Buffalo, NY
Burlington, WI
Chelmsford, MA
Colby, WI
Conrad, IA
Denver, CO
Donna, TX
Edmore, MI
El Paso, TX
Fridley, MN
Garland, TX
Gas City, IN
Golden Valley, MN
Goldsboro, NC
Grafton, WV
Grandville, MI
Hanover, PA
Harrisonburg, VA
High Point, NC
Honea Path, SC

Jackson, TN
Jacksonville, FL
Knoxville, TN
Lancaster, PA
Los Angeles, CA
Marshalltown, IA
Middletown, OH
Milwaukee, WI
Minneapolis, MN
Morganton, NC
Muskogee, OK
Newark, OH
Newberry, SC
Northampton, MA
Northglenn, CO
Omaha, NE
Opelika, AL
Oxnard, CA
Phoenix, AZ
Pittsburgh, PA
Plano, TX
Plymouth, MI
Richmond, VA
Roanoke, VA
Rutherfordton, NC
Salisbury, NC

Salt Lake City, UT (2)
South Gate, CA
Syracuse, NY
Traverse City, MI
Trexlerstown, PA
Tucson, AZ
Vincennes, IN
Waco, TX
Watertown, NY
Windsor, CO
Winter Haven, FL



Wire Products

Chattanooga, TN
Cincinnati, OH
Columbus, GA
Columbus, MS
Boltvar, TN
Lakeland, FL

Graphic Design Centers

Cincinnati, OH
Cranbury, NJ
Dallas, TX
Salisbury, NC
South Gate, CA



Corporate Headquarters

Lake Forest, IL

Technical, Design, Sales and Marketing Offices

Mundelein, IL
Winter Haven, FL



PACKAGING CORPORATION OF AMERICA

Board of Directors and Officers

Directors

Henry F. Frigon

Private Investor and Business Consultant;
Retired President and Chief Executive
Officer, BATUS, Inc.

Louis A. Holland

Founder, Managing Partner and
Chief Investment Officer,
Holland Capital Management

Justin S. Huscher

Managing Director,
Madison Dearborn Partners, Inc.

Samuel M. Menco

Managing Director,
Madison Dearborn Partners, Inc.

Thomas S. Soules

Managing Director,
Madison Dearborn Partners, Inc.

Paul T. Stecko

Chairman and Chief Executive Officer,
Packaging Corporation of America

Rayford K. Williamson

Retired President,
BE&K Engineering Company

Executive Officers

Paul T. Stecko

Chairman and Chief Executive Officer

William J. Sweeney

Executive Vice President, Corrugated Products

Mark W. Kowlzan

Senior Vice President, Containerboard

Richard B. West

Senior Vice President, Chief Financial Officer
and Corporate Secretary

Stephen T. Calhoun

Vice President, Human Resources

Officers

Charles G. Colby

Vice President, Graphic Packaging and Display

Dwight G. Ebeling

Vice President, Area General Manager

Gerald D. Greeter

Vice President, Containerboard Sales

F. Wayne Gregg

Vice President, Area General Manager

Dwight L. Haley

Vice President, Area General Manager

Thomas A. Hassfurth

Vice President, Sales and Marketing

John R. Martin

Vice President, Manufacturing Services

James A. McKee

Vice President, Area General Manager

Robert A. Schneider

Vice President, Chief Information Officer

Anil Sethy

Vice President, Engineering

Bryan L. Sorensen

Vice President, Operation Services

V. Rollie Sumwalt

Vice President, Area General Manager

Thomas W.H. Walton

Vice President, Area General Manager

PACKAGING CORPORATION OF AMERICA

Shareholder Information

Annual Meeting

The annual meeting of shareholders will be held at 8:30 a.m., CDT, on May 14, 2003, at the Company's offices at 1900 West Field Court, Lake Forest, IL 60045.

Shareholder Services

To transfer securities, change address or replace lost certificates, please contact:

Packaging Corporation of America Shareholder Services

c/o EquiServe Trust Company N.A.

P.O. Box 43069, Providence, RI 02940-3069

Toll Free: (800) 446-2617 Outside North America: (781) 575-2723

Stock Exchange Information

Packaging Corporation of America's common stock is listed on the New York Stock Exchange under the symbol PKG. PCA became a public company on January 28, 2000.

Website

www.packagingcorp.com

Corporate news releases, Forms 10-K and 10-Q, annual reports and a variety of additional information of potential interest to investors are available through the Company's website.

Requests for Information

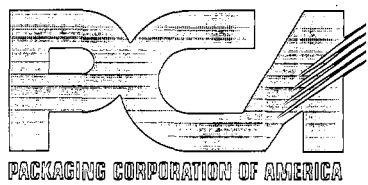
Additional information is available without charge. For additional copies of annual reports, Forms 10-K and 10-Q or other financial information, please contact:

Investor Relations

Packaging Corporation of America

1900 West Field Court, Lake Forest, IL 60045

Toll Free: (877) 454-2509



1900 West Field Court, Lake Forest, IL 60045
Toll Free: (800) 456-4725
For Investor Relations: (877) 454-2509
www.packagingcorp.com