



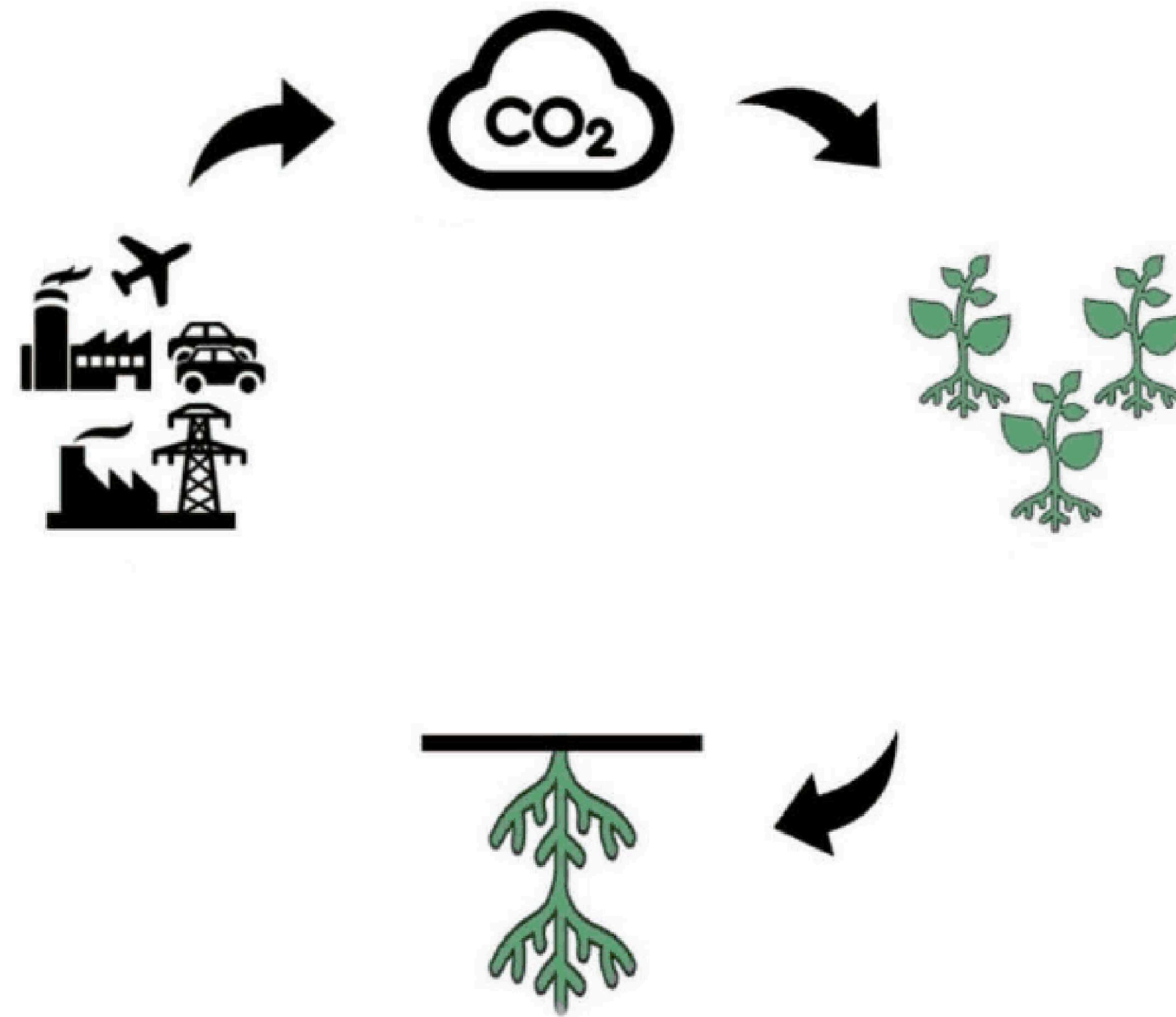
THRIVE *and*
GROW
farms

We have created a proven turnkey regenerative farm model that is producing wealth through the formation of new regenerative farms and has led to the creation of a new regenerative foods brand

**Industrial agriculture is
destructive**

**The solution is
regenerative farming**

UNLOCKING A NATURAL CLIMATE SOLUTION



Regenerative Agriculture in the News

KISS THE GROUND

NETFLIX FILM SHOWS HOW SUSTAINABLE
FARMING HELPS FIGHT CLIMATE CHANGE.

Report: Regenerative Agriculture Makes Farmers and Ranchers More Resilient to Climate Change

Policy Recommendations Advance the Land Management
Philosophy as a Natural Climate Solution

April 21, 2022

WASHINGTON – Regenerative agriculture helps farmers and ranchers withstand the effects of climate change, according to a [new report](#) released today by NRDC (Natural Resources Defense Council).

Regenerative Agriculture: Farm Policy for the 21st Century, comes at the heels of a United Nations report that paints the grim effects of global warming, and highlights how regenerative agriculture provides multiple environmental co-benefits – including building soil health which helps sequester carbon – while

MEDIA CONTACTS

Daniela Arellano
424-268-6677, darellano@nrdc.org



United
Nations

UN News

Global perspective Human stories

Search



Advanced Search

Home

Topics

In depth

Secretary-General

Media

AUDIO HUB SUBSCRIBE

Soil erosion must be stopped ‘to save our future’, says UN agriculture agency





"Regenerative
Agriculture will be the
next No. 1 food trend"

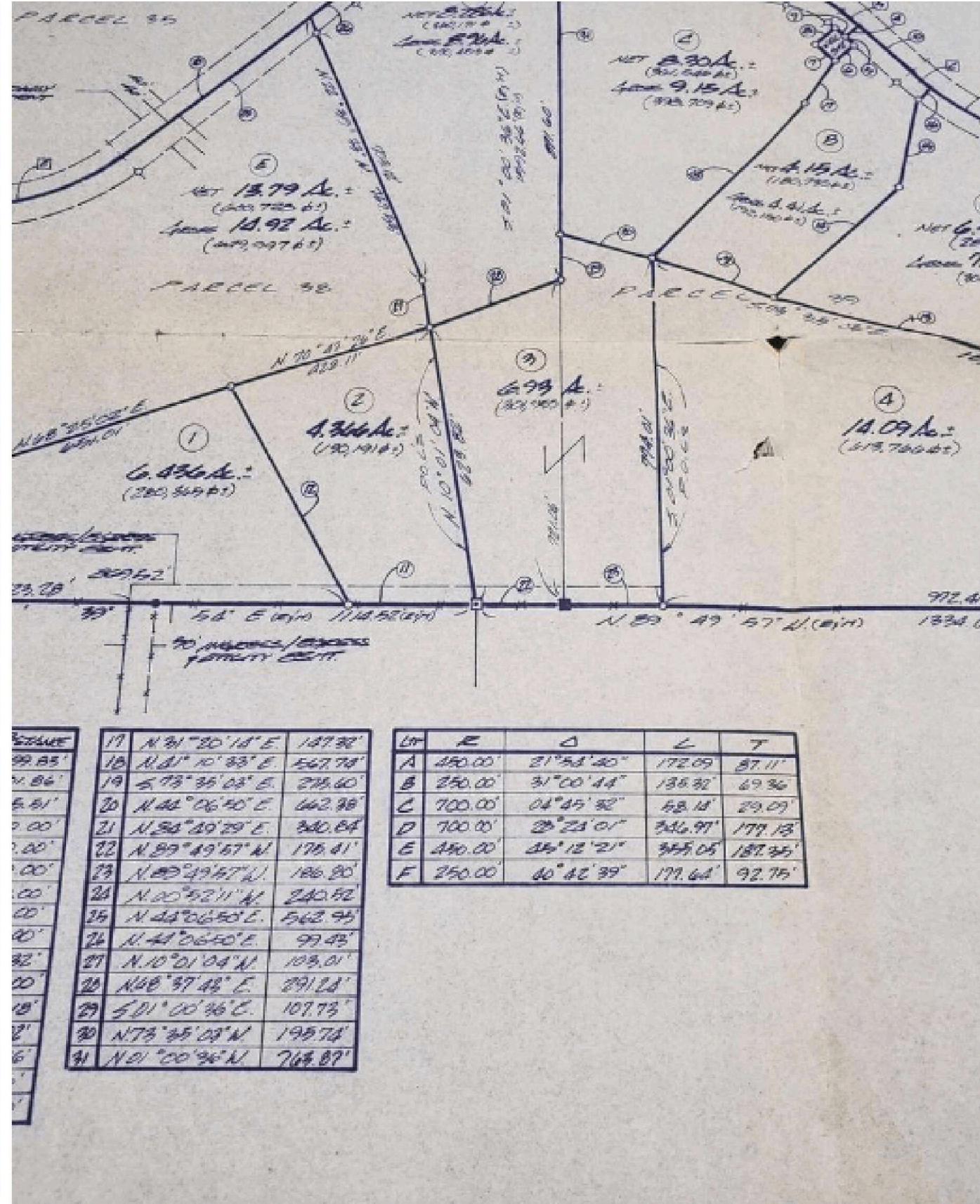
-Wholefoods



Thrive and Grow Farms Solutions



Regenerative Turn-key Farm Program



New Farm Developments



Regenerative Foods Brand

Proving our Turnkey Farm Model

Moonlighter Farm Case Study

We collaborated with agriculturalist Tommie Burch and created a turnkey regenerative farm model.

One year after he began growing crops on his new farm we now have hard data to validate our model!

On just 1/4 acre, Tommie will recoup all expenses including his own labor and even the cost of drilling a well in just 1.8 years!



Valuable intellectual property

The Turn-key Farm model we created is the key to producing successful regenerative farms.

This is valuable intellectual property due to its impact and expected revenue on our demonstration farm, turn-key farm development sales, and DIY farm startup support services.

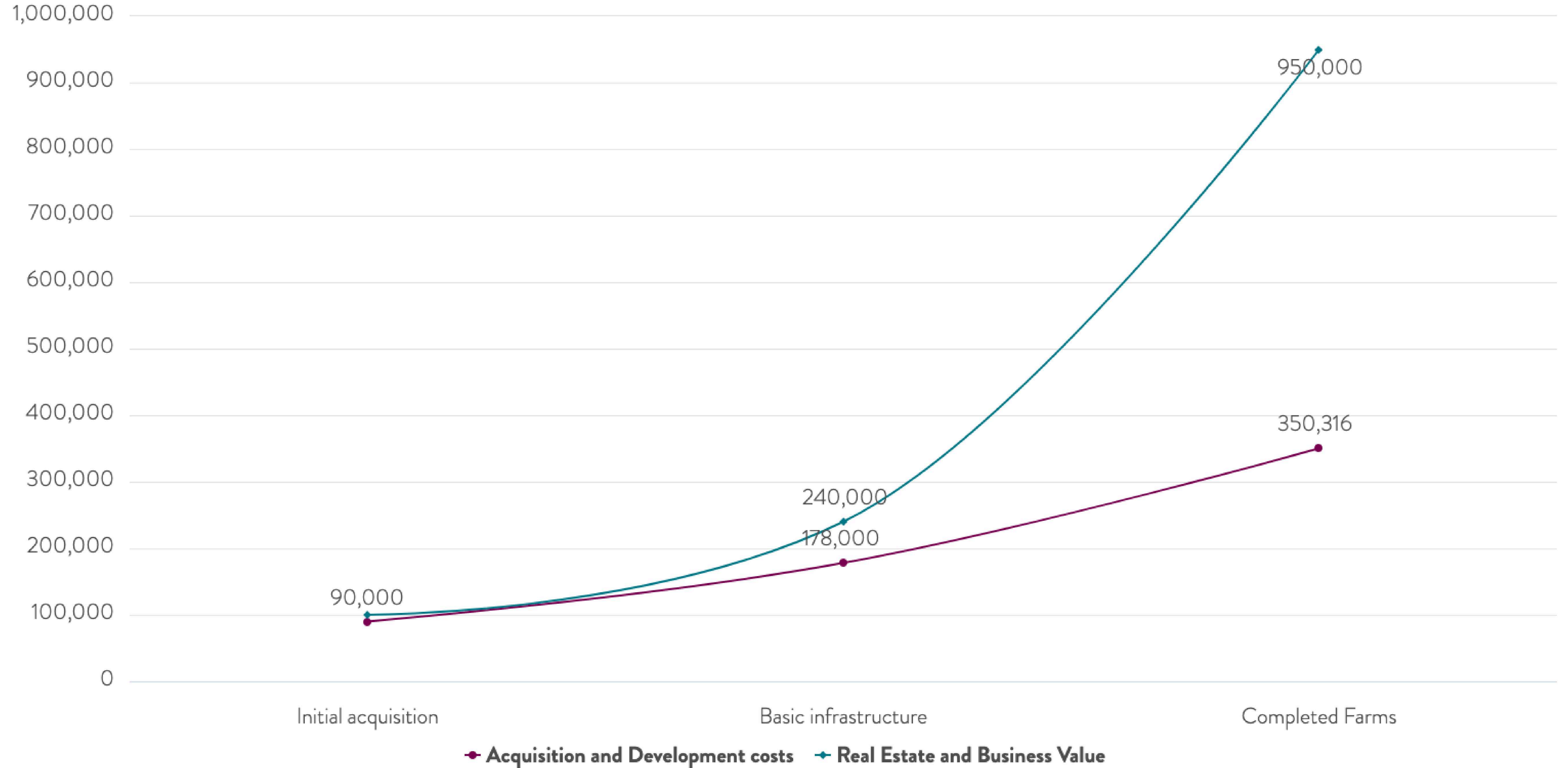


Our First Turn-key Farm Sites

These 4 farm sites will be fully developed small regenerative farm businesses that we plan to sell for a 271% ROI (Forward-looking projections cannot be guaranteed)



Expected ROI for first 4 Turn-key Farm Sales



Forward-looking projections cannot be guaranteed.

Packaged agricultural products

Local commodities turned into Thrive's new packaged food brand, Truly Regenerative TM

Check out the "Truly Regenerative" slide deck PDF



Regenerative Agriculture already overtaking the organic food movement.

Forbes

Regenerative Agriculture: The Next Trend In Food Retailing



Jack Uldrich Forbes Councils Member
Forbes Business Council
COUNCIL POST | Membership (Fee-Based)

Aug 19, 2021, 07:00am EDT

Who is transitioning?

Walmart 



Future Exit

TRULY

REGENERATIVE



THRIVE *and*
GROW
farms

Our freeze-dried regenerative food and supplements brand.

Truly Regenerative will be high impact and high future value.

Truly Regenerative will be of the first regenerative food brands to market.



Forward-looking projections cannot be guaranteed.



Michael Ismail
Founder

- **Agriculture and land development expert**
- **Mortgage finance 2005-2008**
- **Real estate investor beginning in 2007**
- **Founded Thrive Business Consulting in 2012**
- **Founded Thrive and Grow Gardens in 2014**
- **Founded Thrive and Grow Farms in 2020**



Kendyl Ismail
Co-founder

- **Career as a director of sales and marketing since 2011**
- **Became Co-founder in 2020**
- **Director of sales, marketing and public relations**
- **Capital sourcing**



Kent Adams
Score Mentor

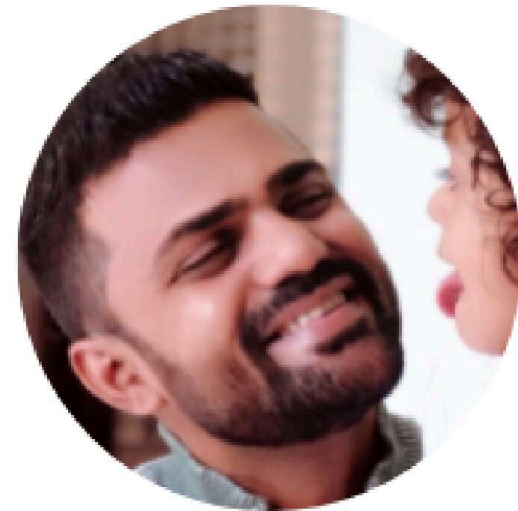
- **Founded Locus Solutions**
- **Developed CO2 sequestering water saving agricultural solution**
- **Start business in probiotics, which was sold for \$250 Million**
- **Consumer packaged good which was sold for \$135 million**



Stephanie Lipari
CEA Manager



Eitan Waxman
Web developer



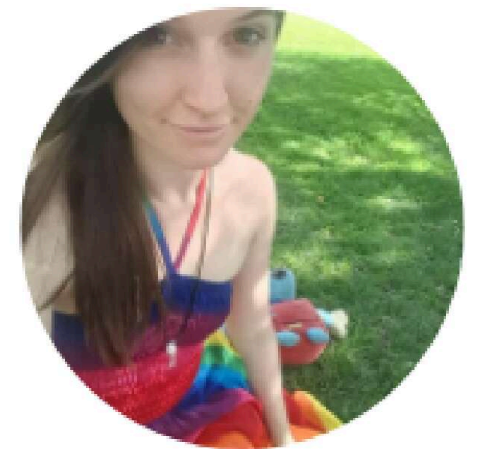
Dhaval Patel
SEO Expert



Tommie Burch
Agriculturalist



Chris Patzke
CEA expert



Aurora DeShazo
Farm hand

Anyone can invest in our revenue share through Wefunder!

Are you an accredited investor? You can also invest in our convertible notes through our REG D fundraiser.

Diversify
YOUR
Investment

Revenue Share

*2.5x
return*


AND

Convertible Note

*V.Cap
\$7.5 M*

*20%
Disc.*

***We've already raised
\$125k of our \$1.2
million goal***

A man wearing a wide-brimmed hat, a plaid shirt, and jeans stands on a dirt path, looking towards the right. In the background, a tractor is visible on the path, and the sun is setting, creating a warm, golden glow. The scene is set in a rural, agricultural area with some vegetation and utility poles.

Schedule a meeting
with us to learn
more.

Michael Ismail: 520-248-2374

Michael@thriveandgrowgardens.com

www.thriveandgrowfarms.com